

# Developing a seismic hazard model for Sabah, East Malaysia, using seismic and geodetic data

**Amy Gilligan (1)**, Nicholas Rawlinson (2),  
Felix Tongkul (3), Randell Stephenson(1)

(1) University of Aberdeen, (2) University of Cambridge, (3) Universiti Malaysia Sabah

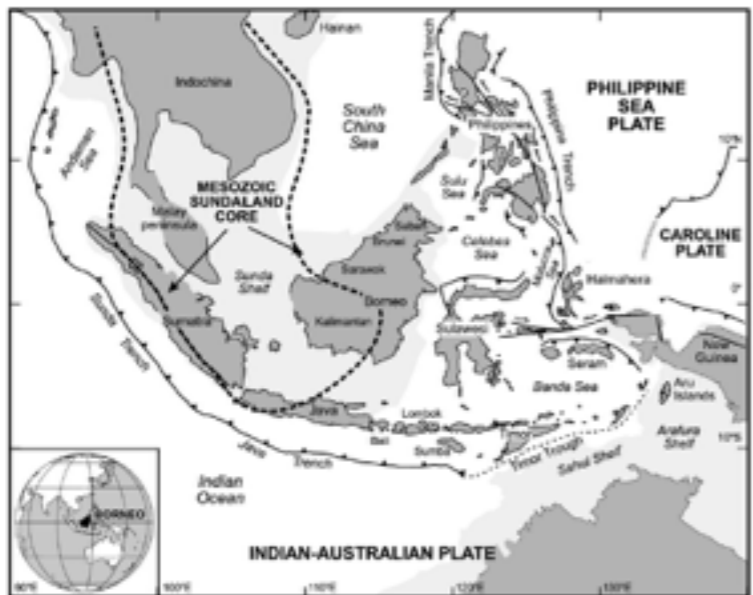
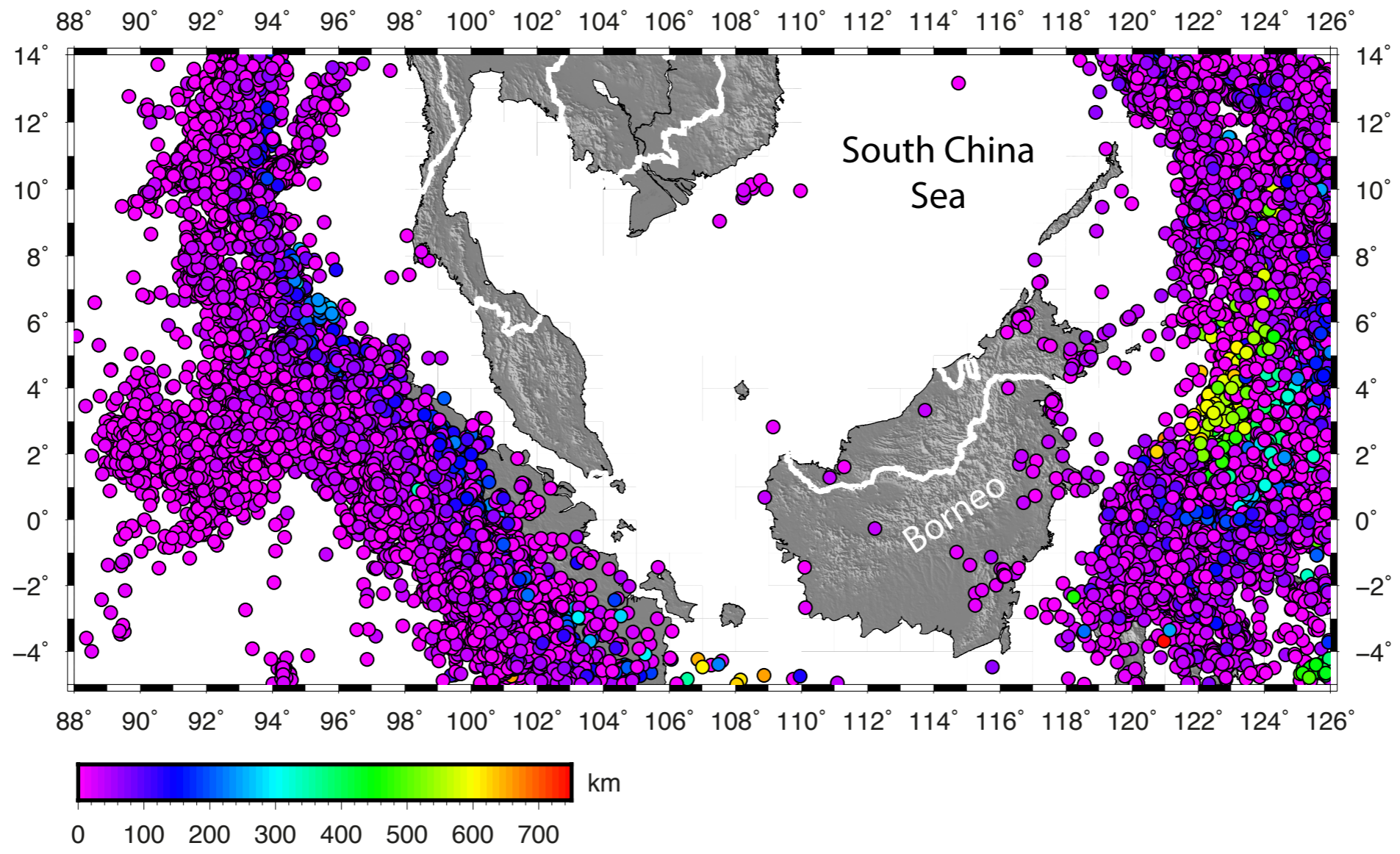


Fig. 2. Plate tectonic setting of Borneo and Sundaland.

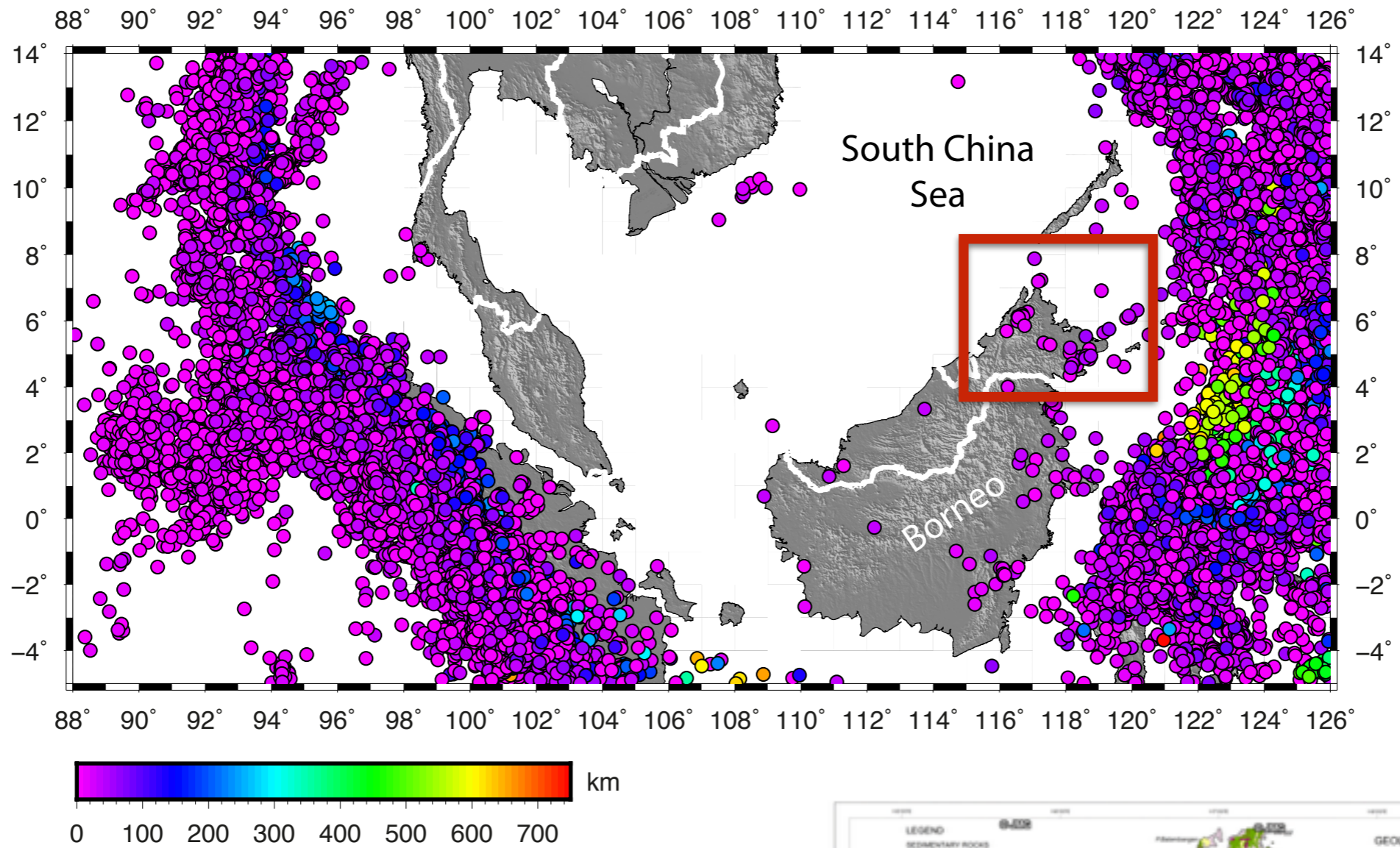
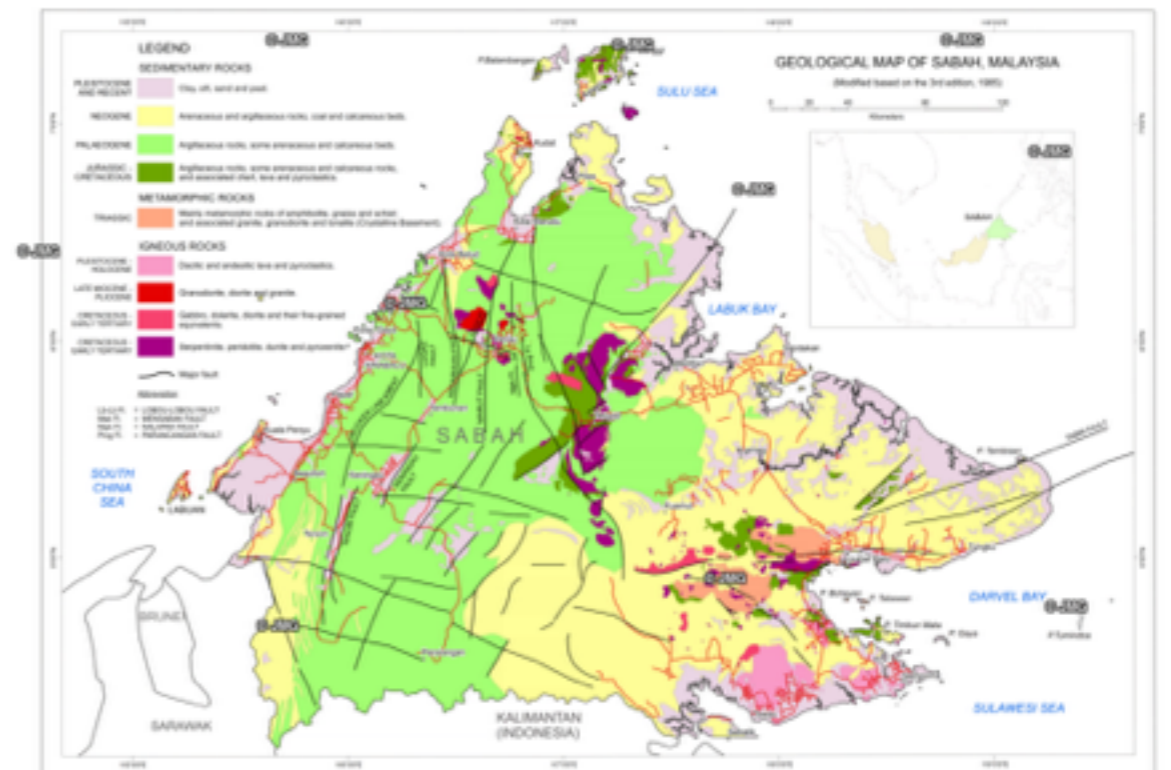
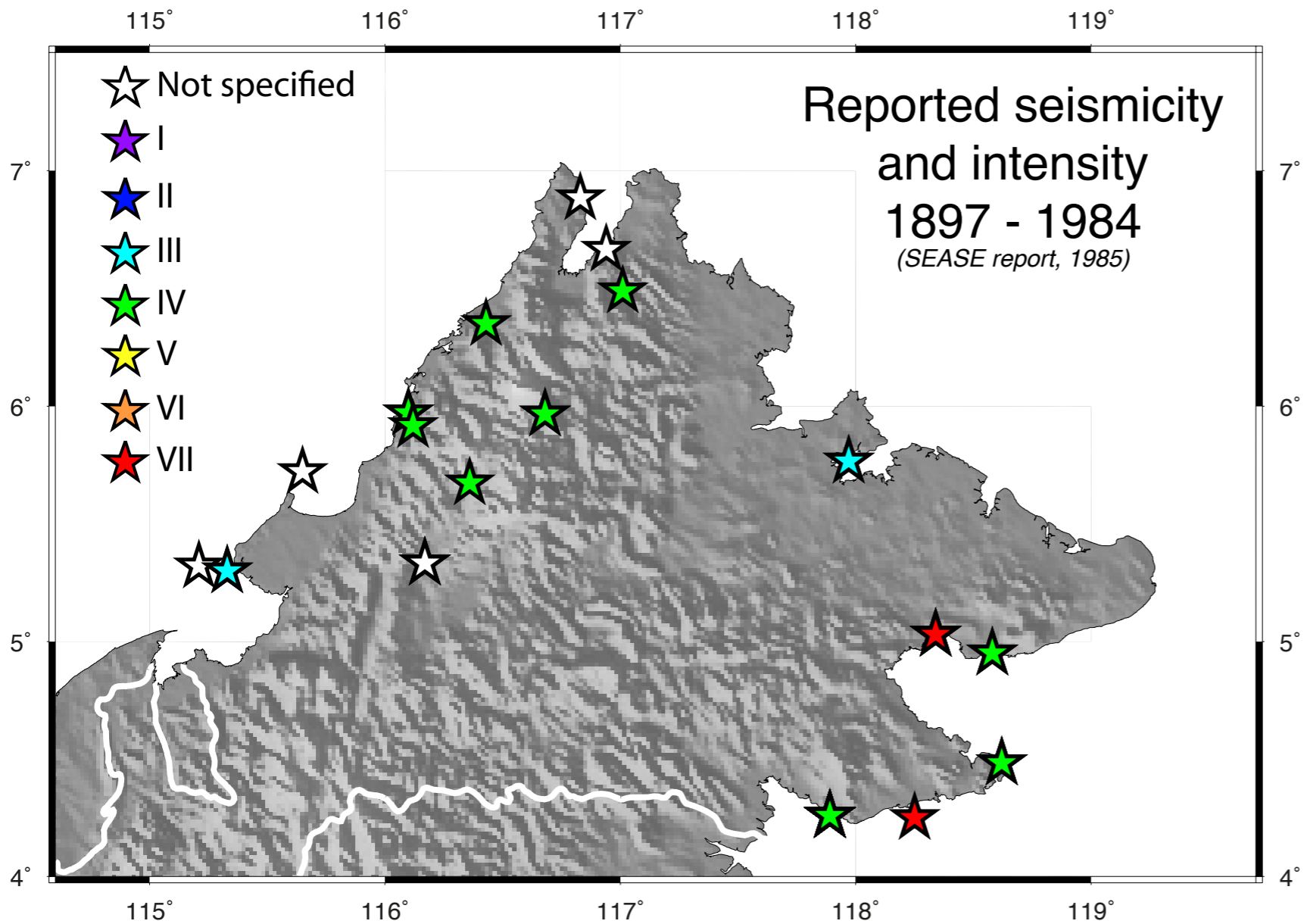
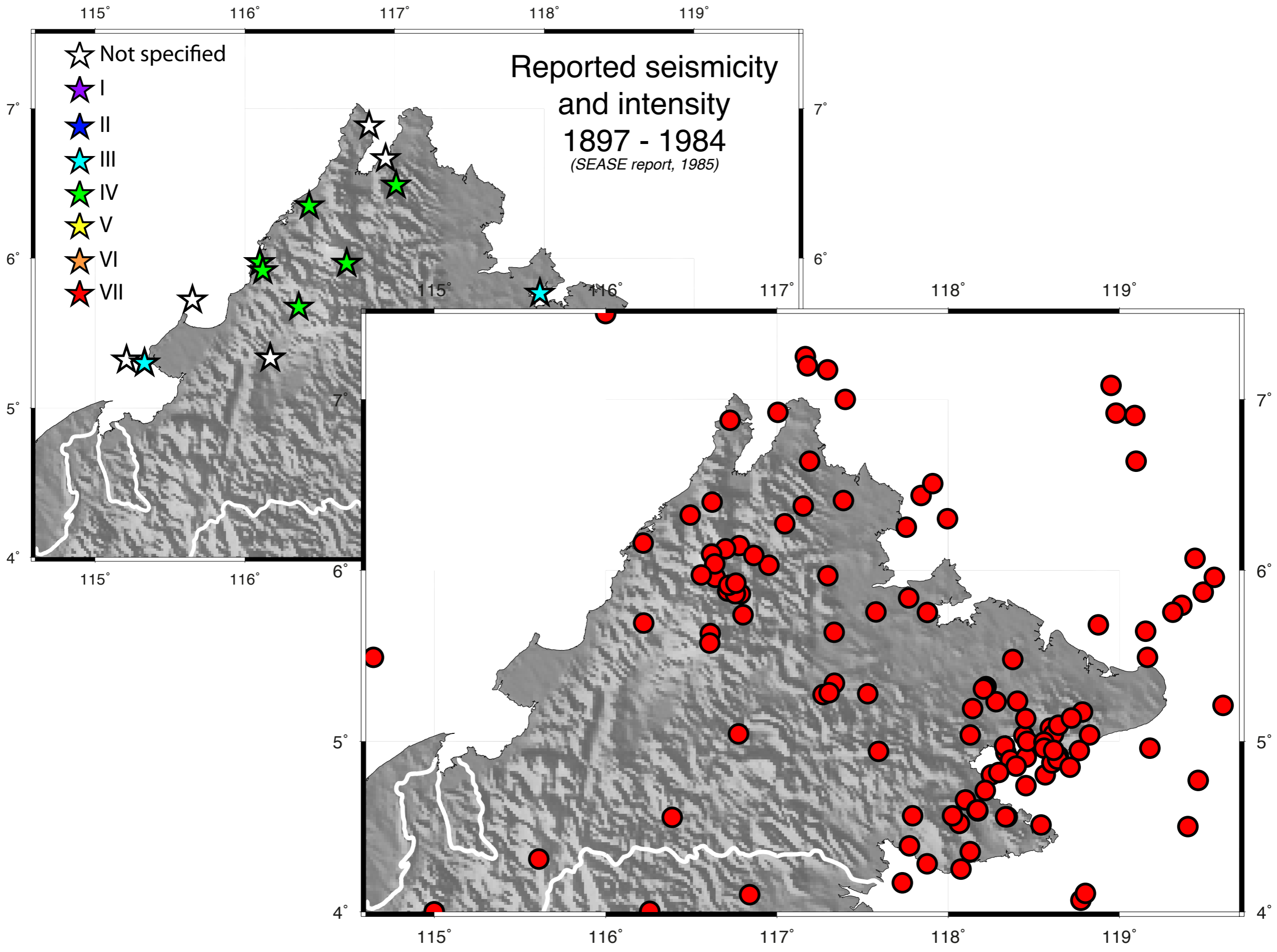


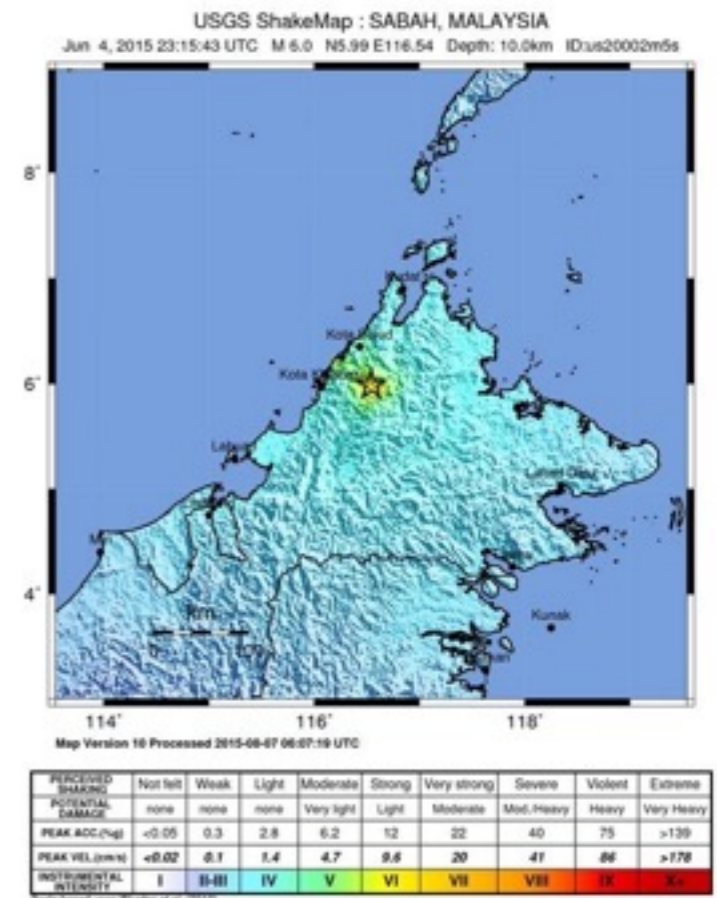
Fig. 2. Plate tectonic setting of Borneo and Southeast Asia.

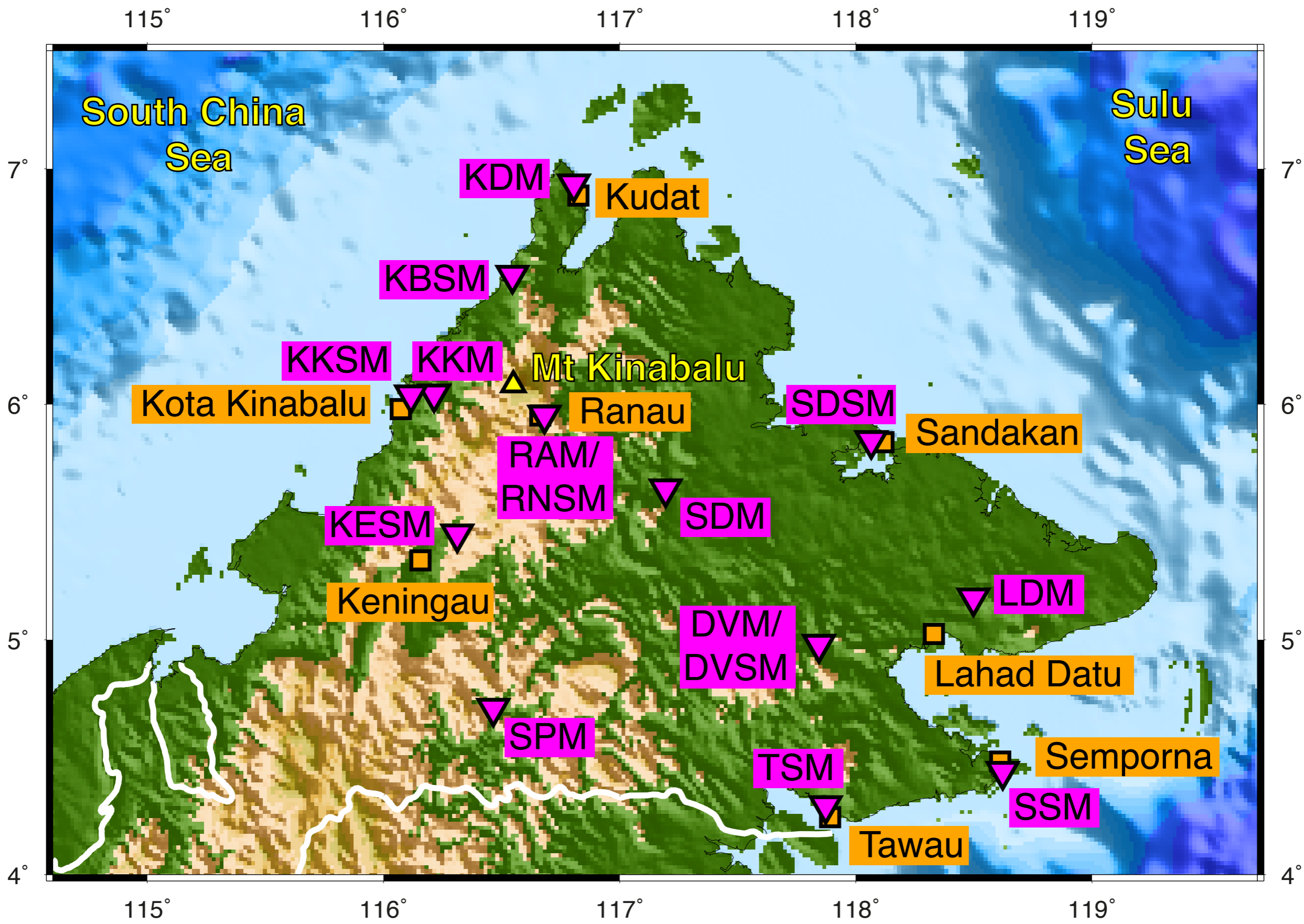


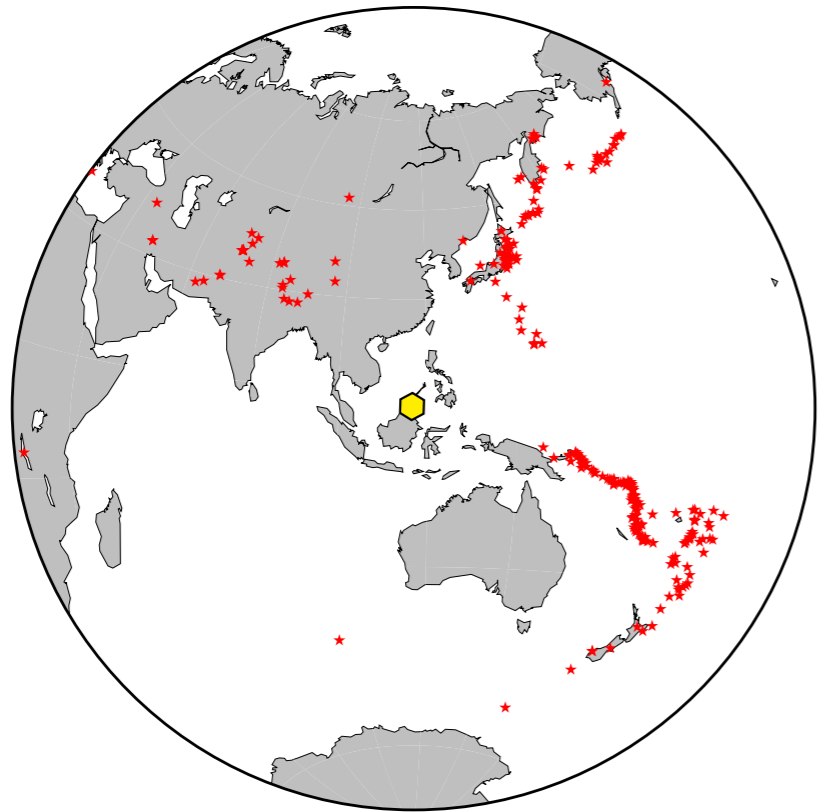
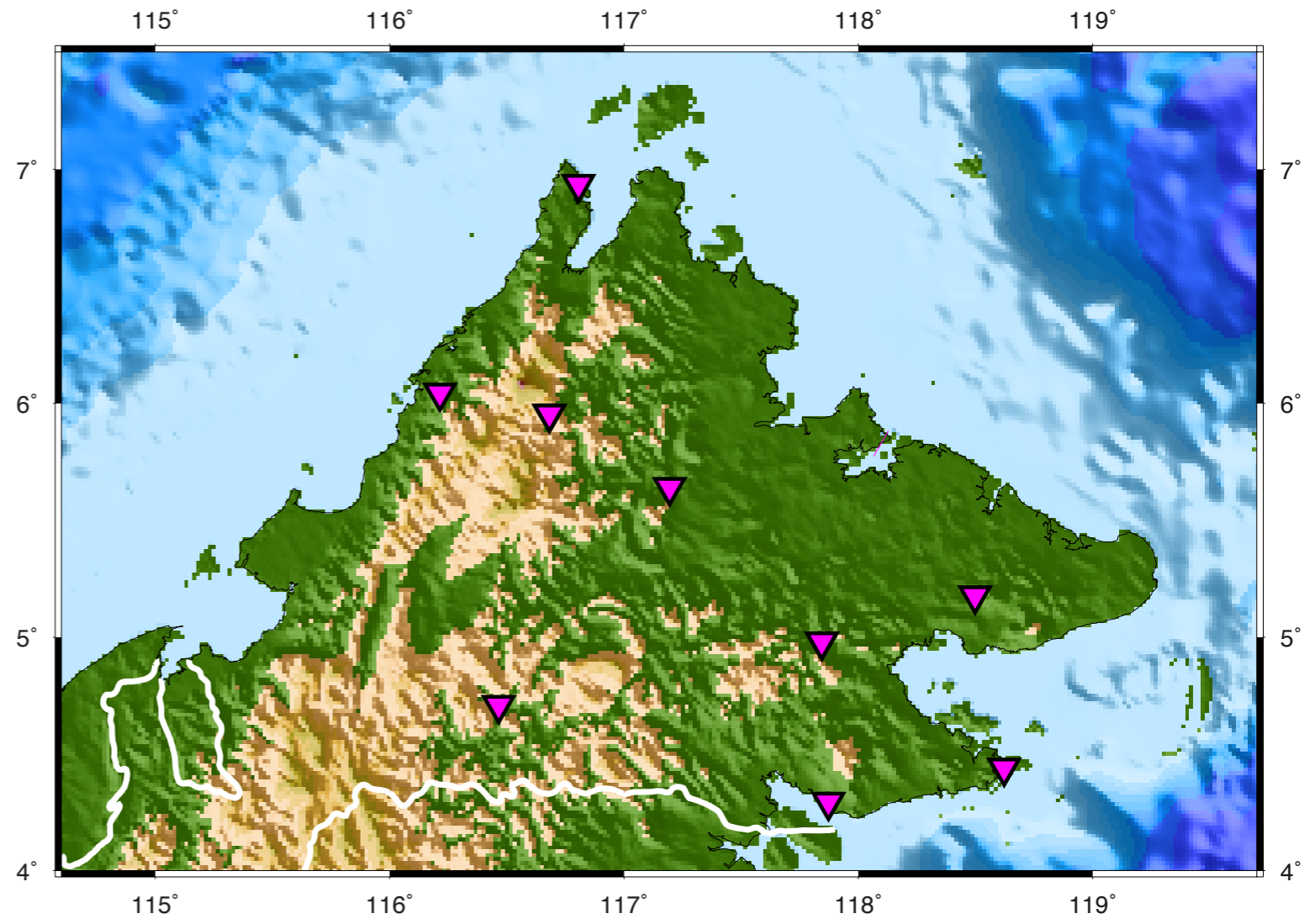




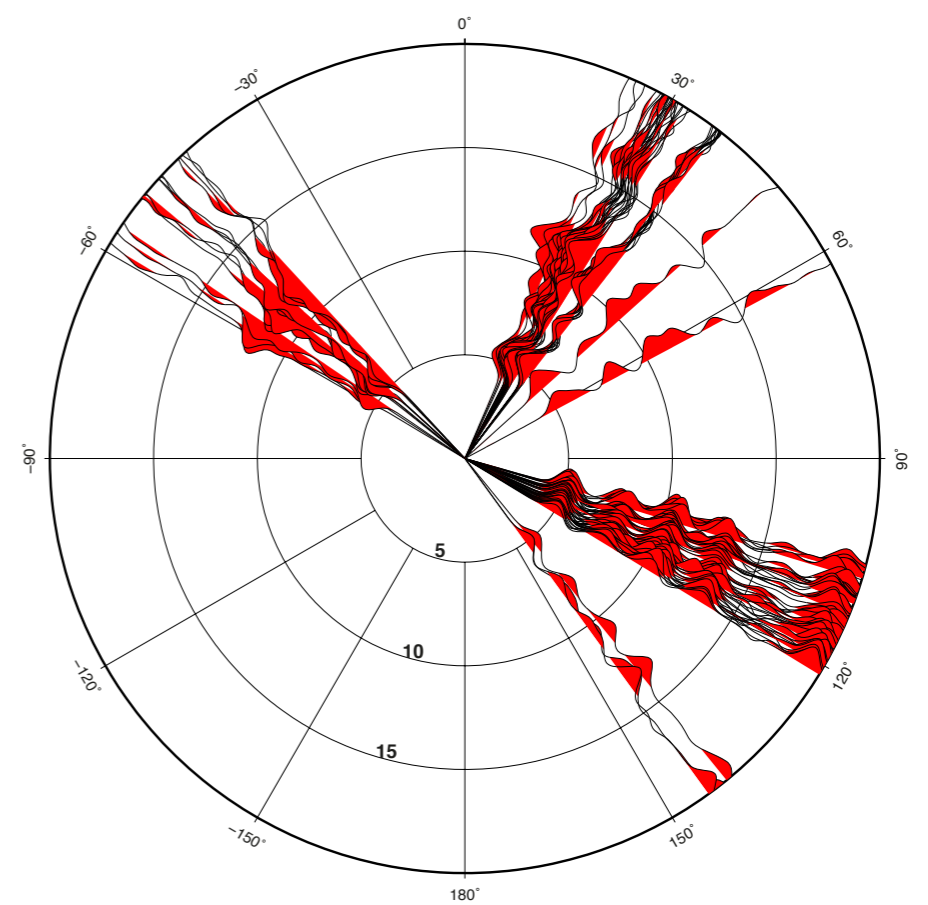
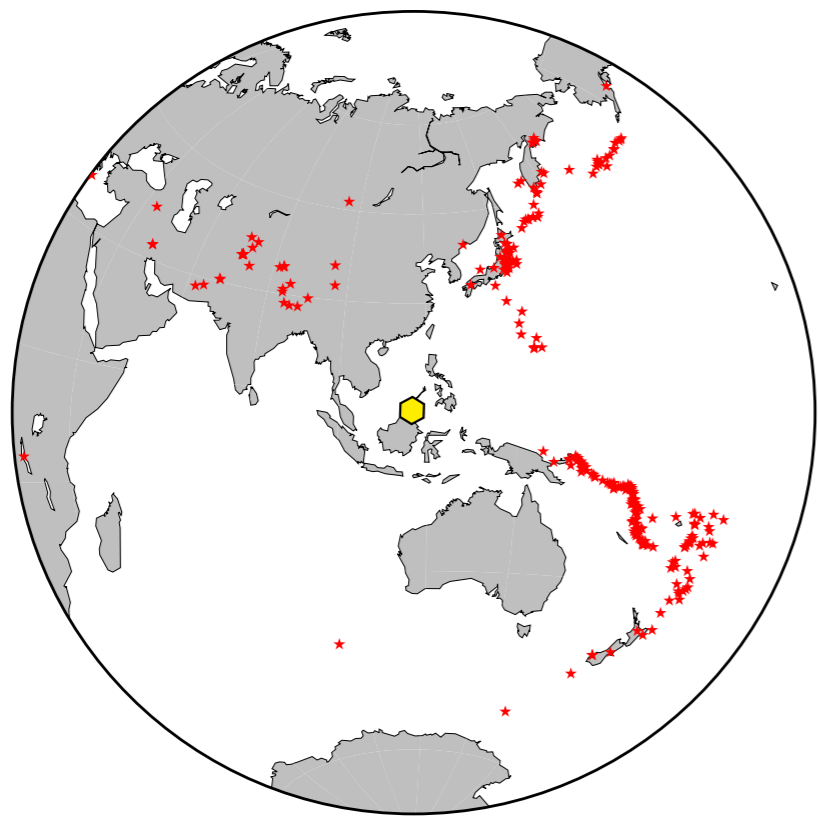
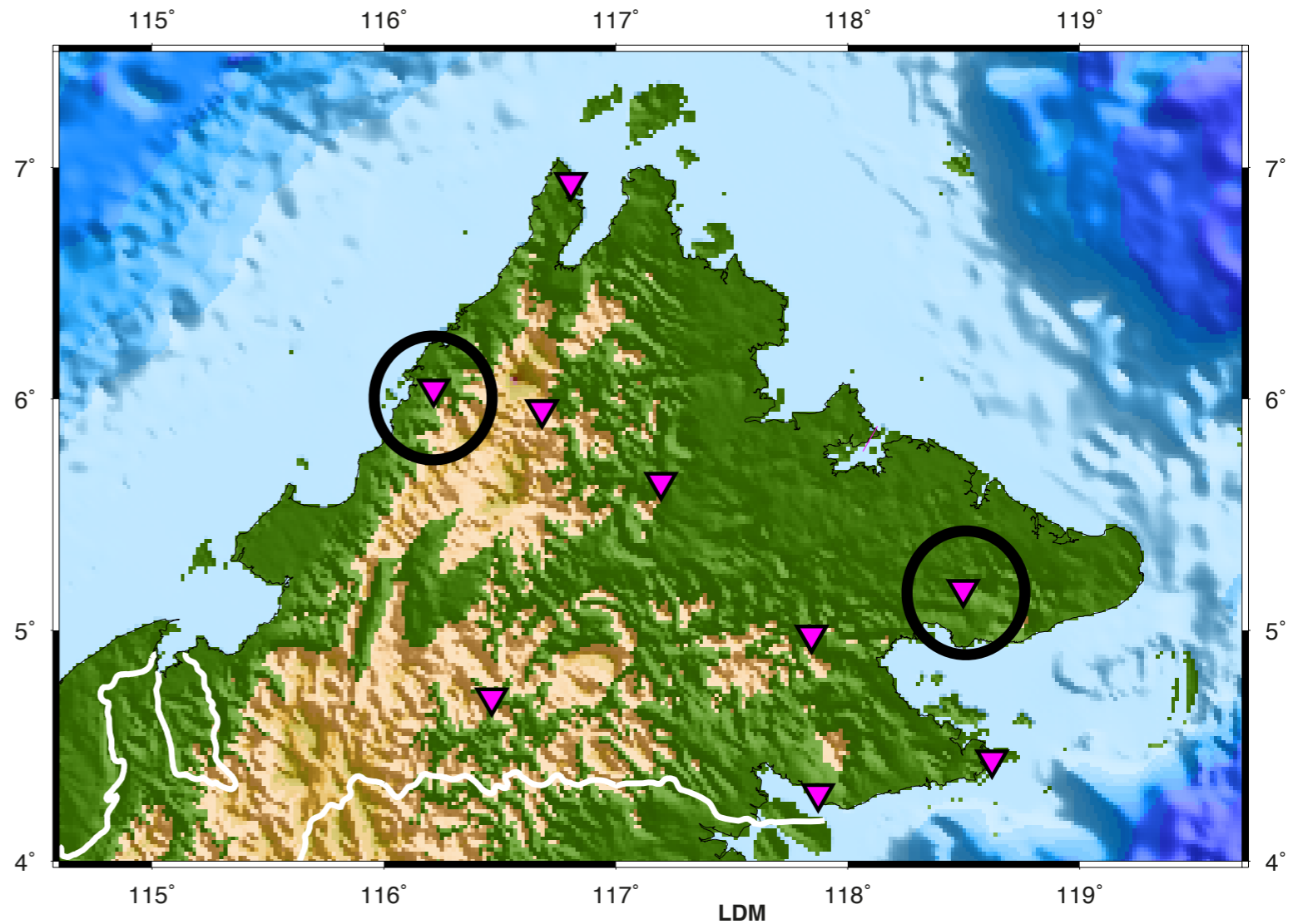
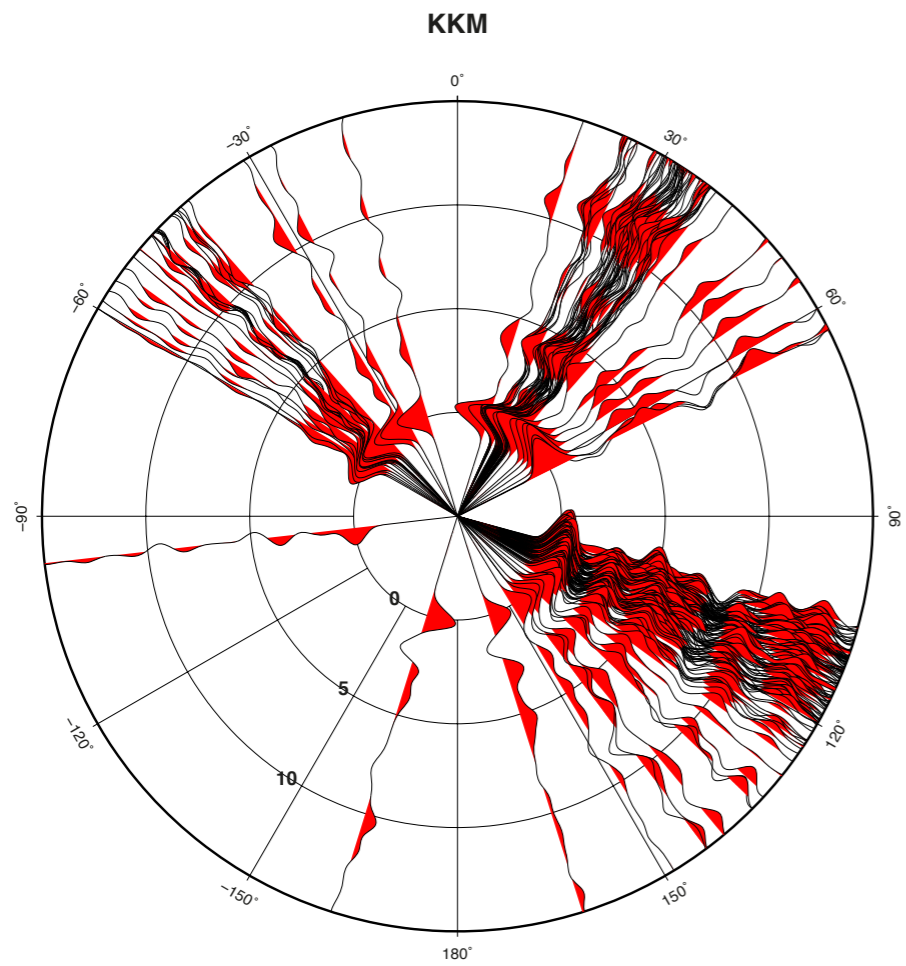
# June 2015 M6.0 Ranau earthquake

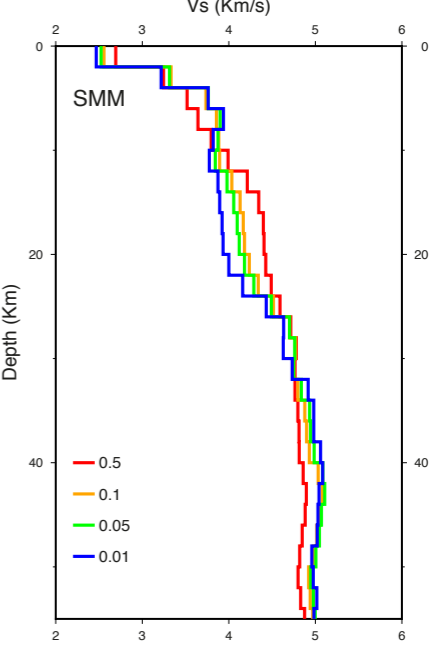
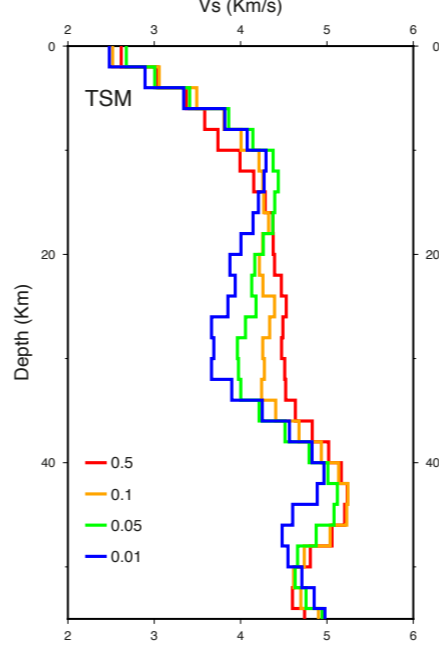
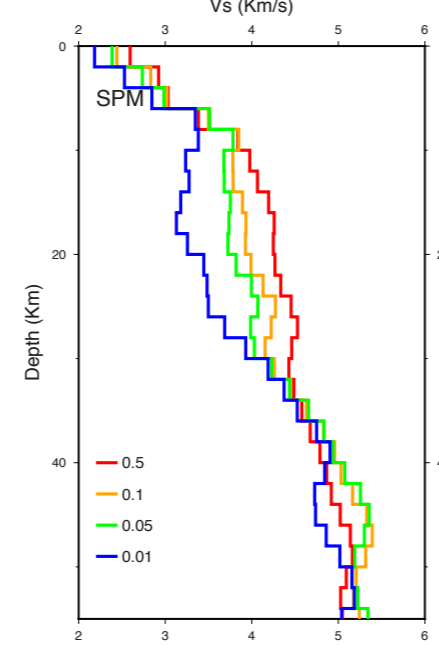
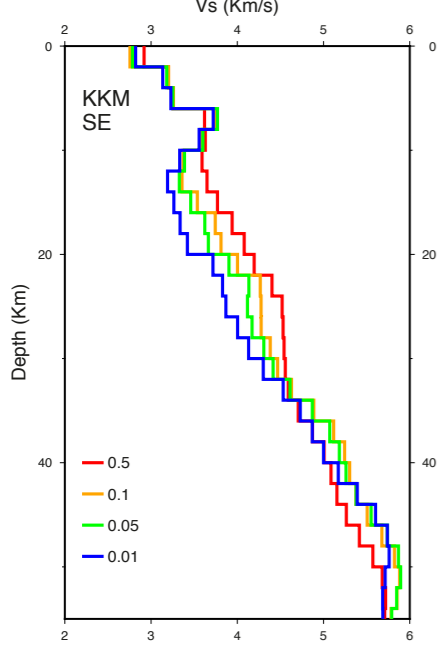
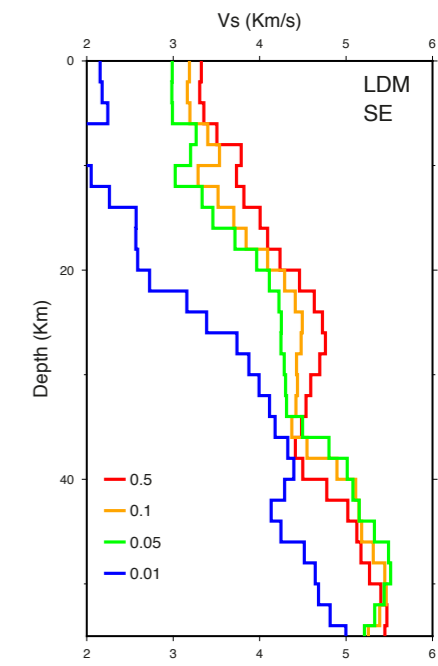
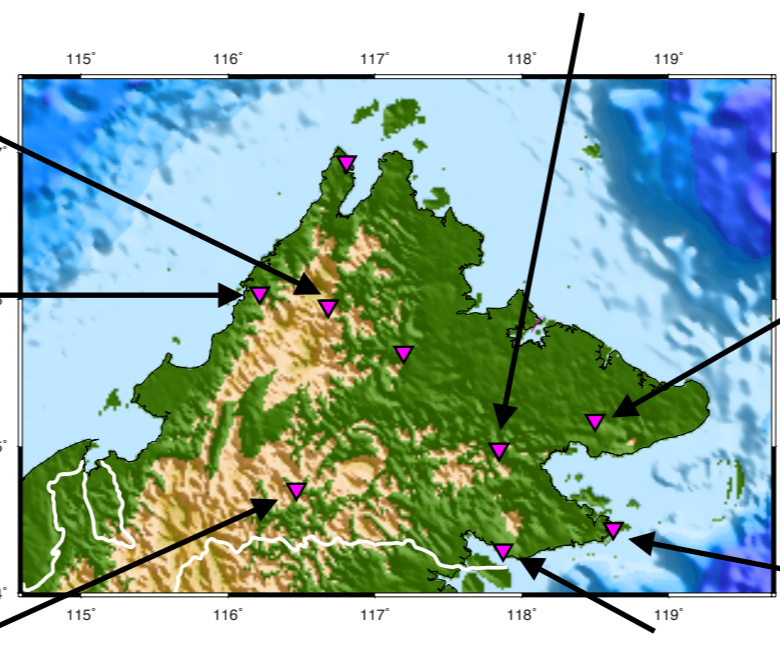
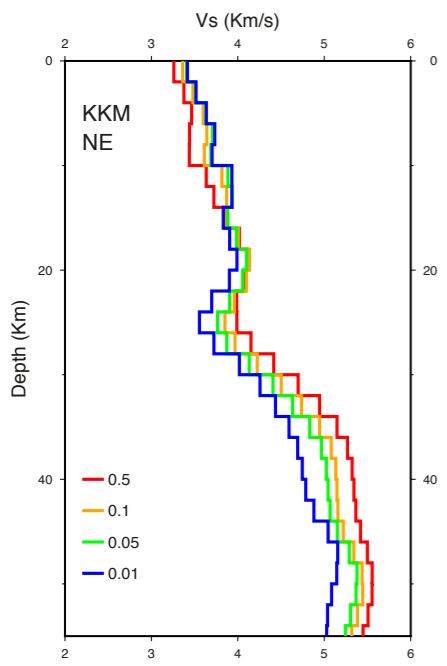
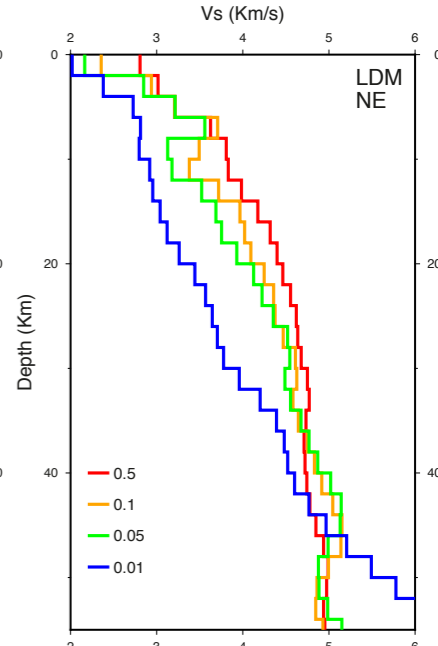
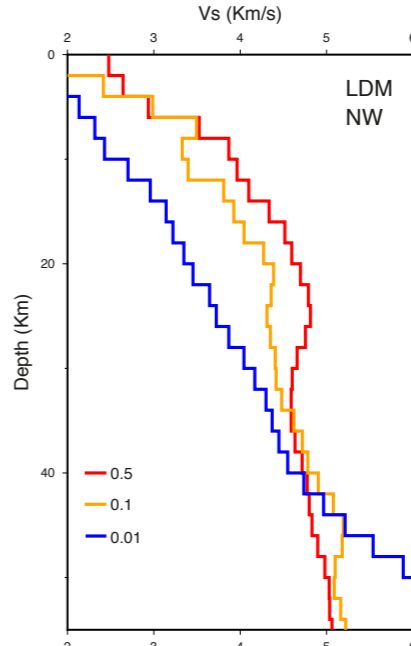
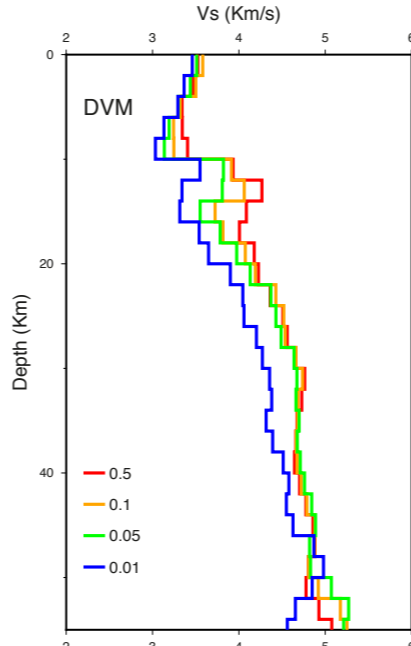
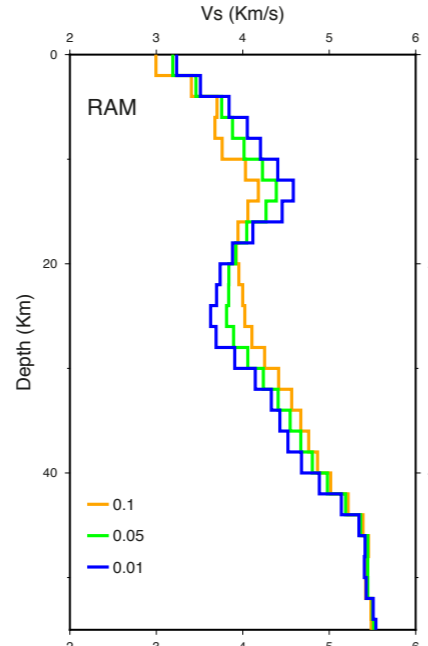
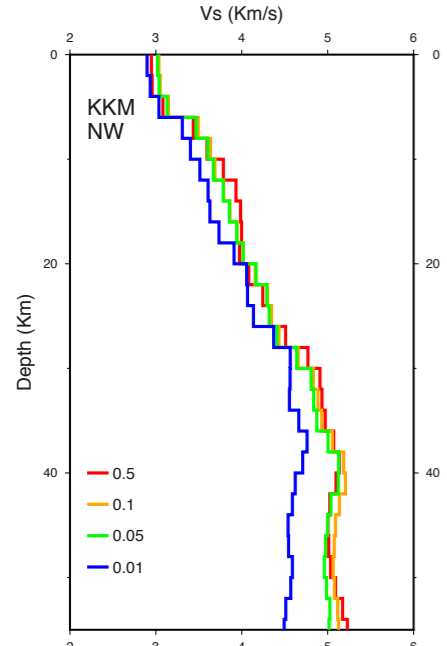




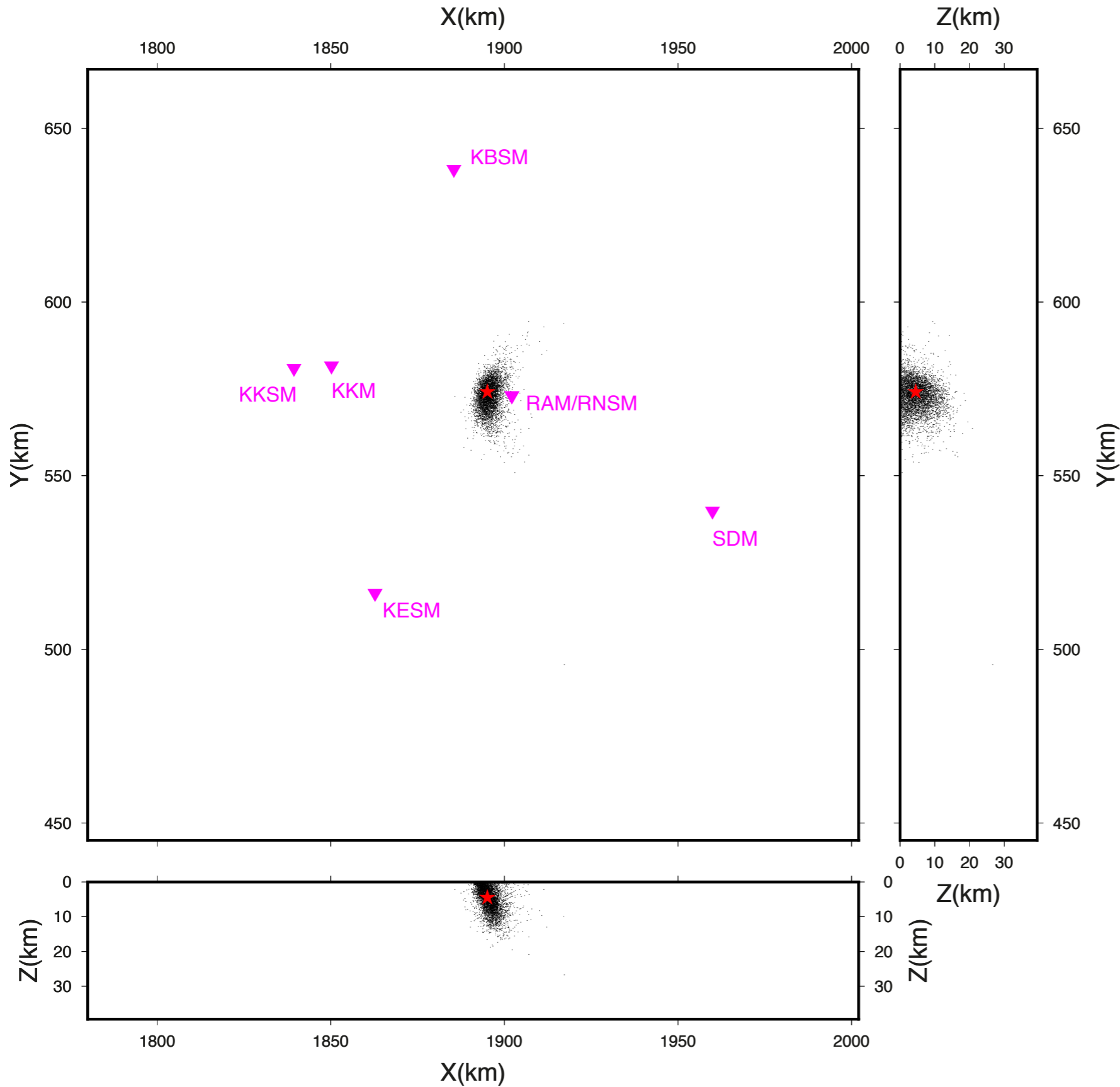




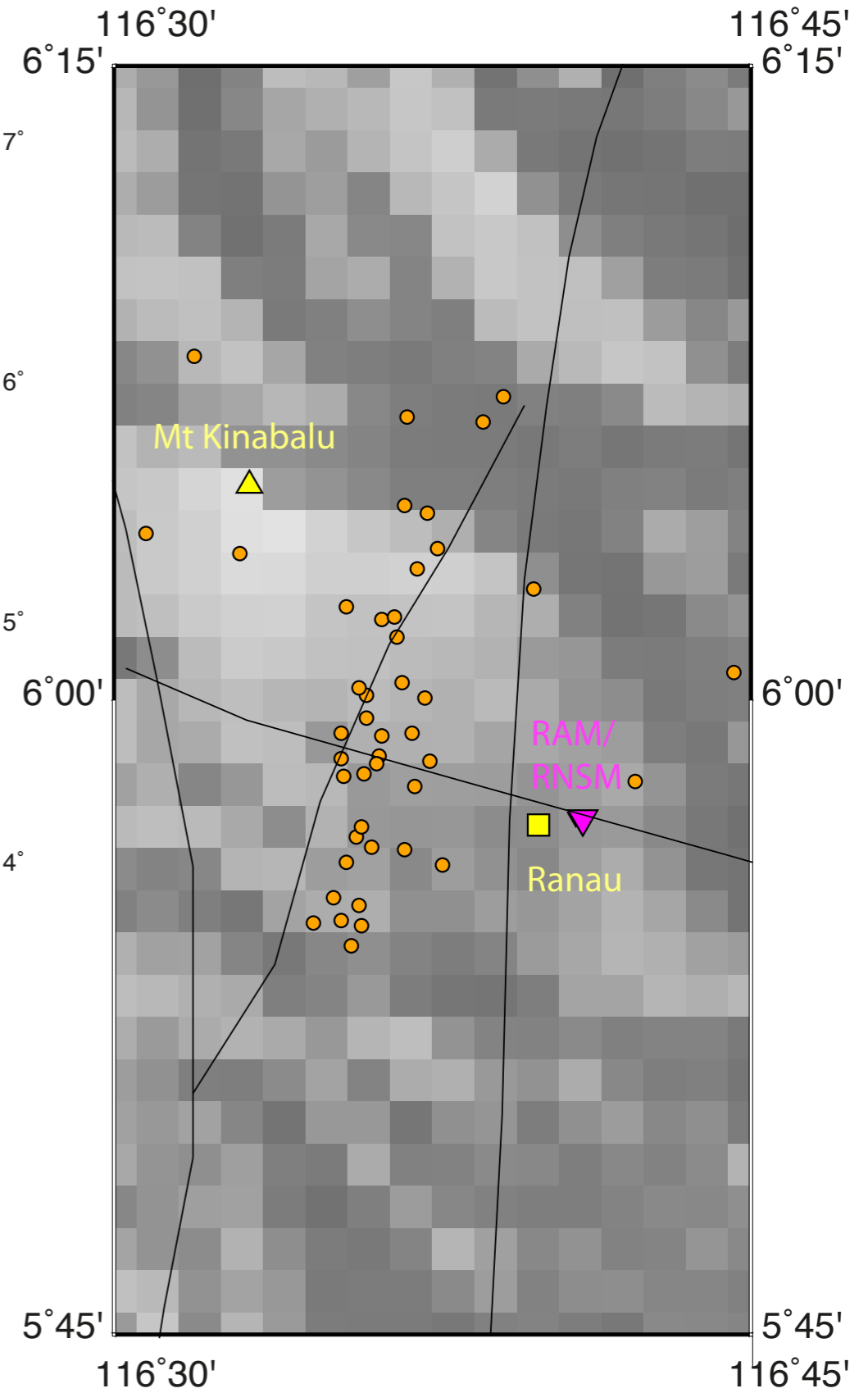
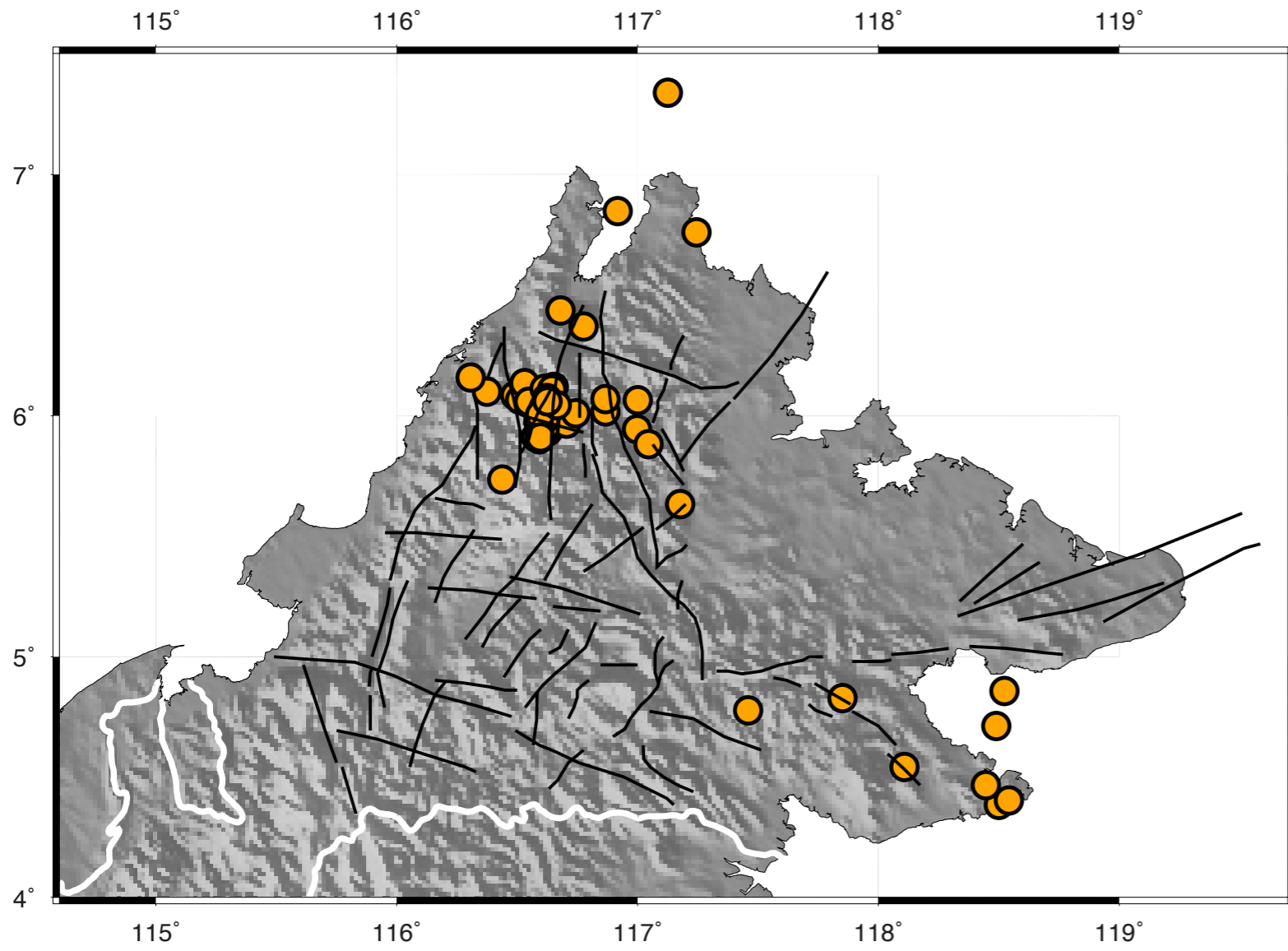




2015 09 11 03:16:13.5097 Lat: 5.966 Long: 116.618 Z: 4.49km RMS: 0.42s



Use NonLinLoc  
(Lomax, 2001)  
to locate events  
where there  
were 4 or more  
arrivals that  
could be clearly  
picked.



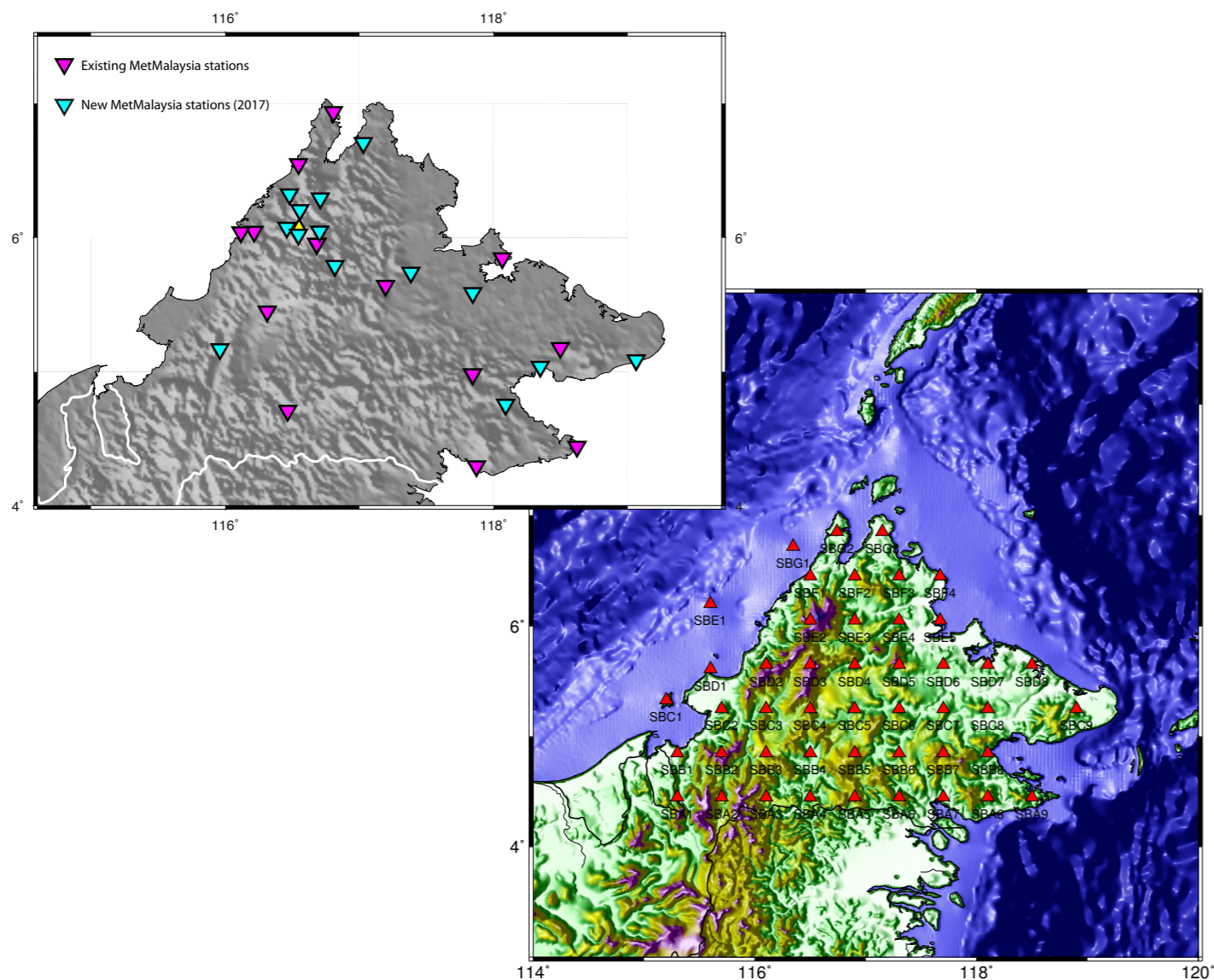
Locate 68 events using data from 2005-2016. 57 from around Ranau.

Improving the  
velocity model  
and earthquake  
locations

Relating  
seismicity  
to faults and  
tectonics

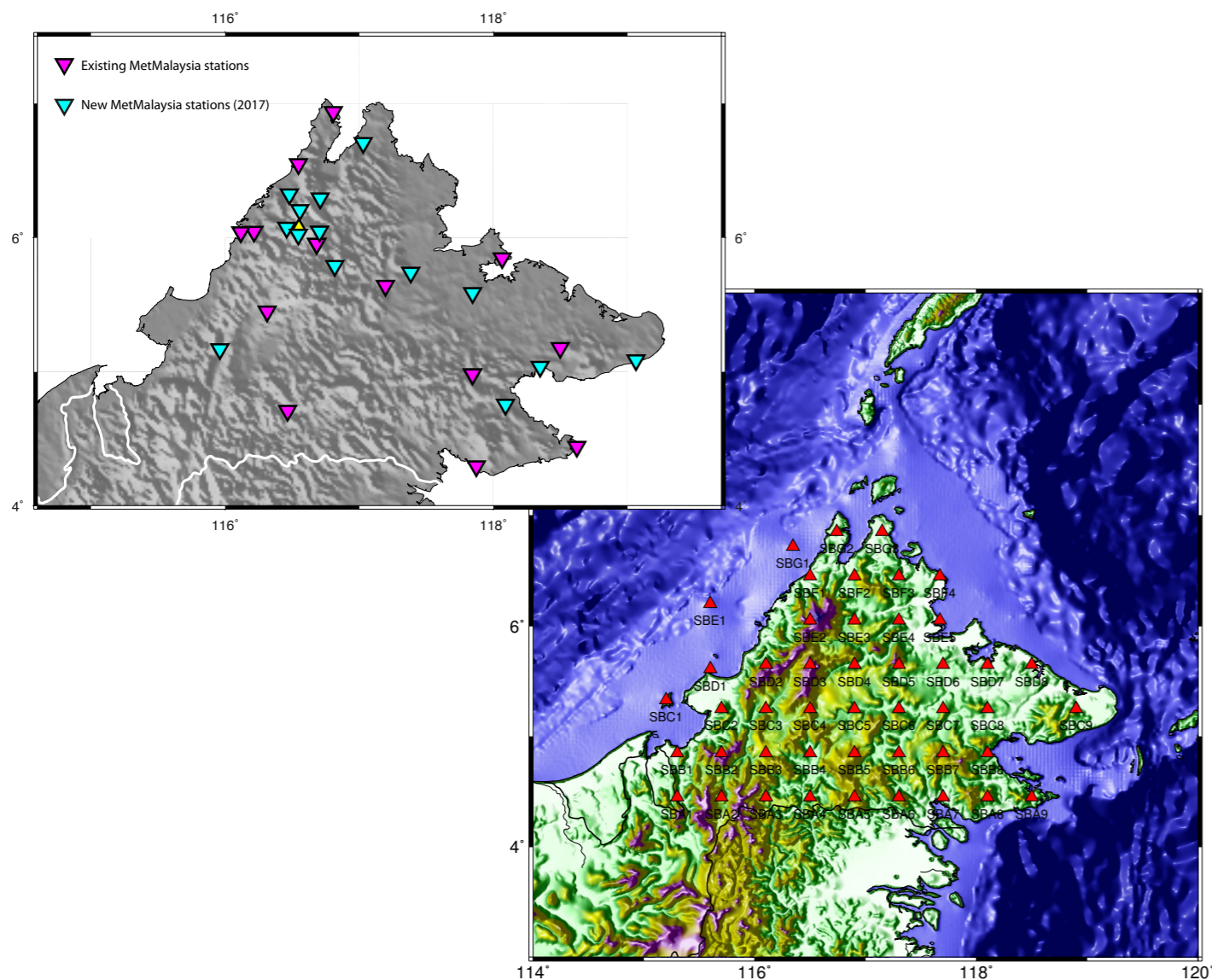
Improving the  
velocity model  
and earthquake  
locations

Relating  
seismicity  
to faults and  
tectonics

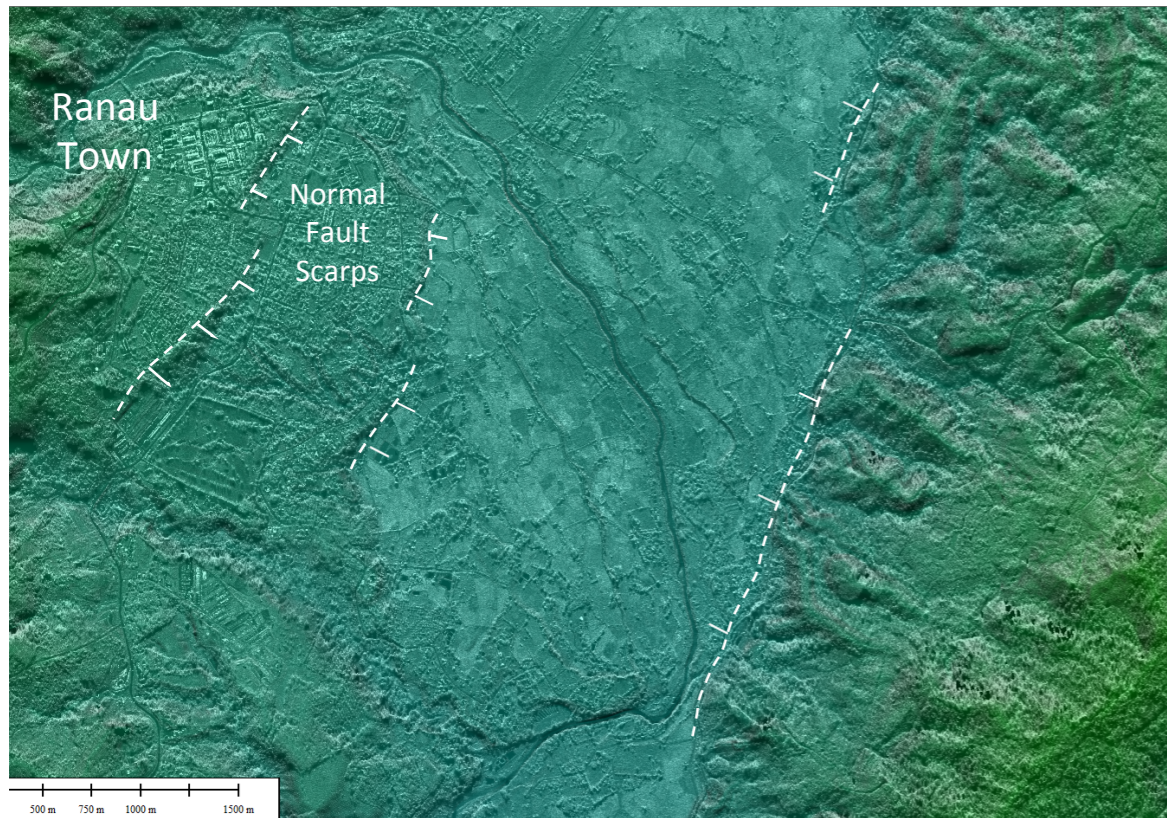


Improving the velocity model and earthquake locations

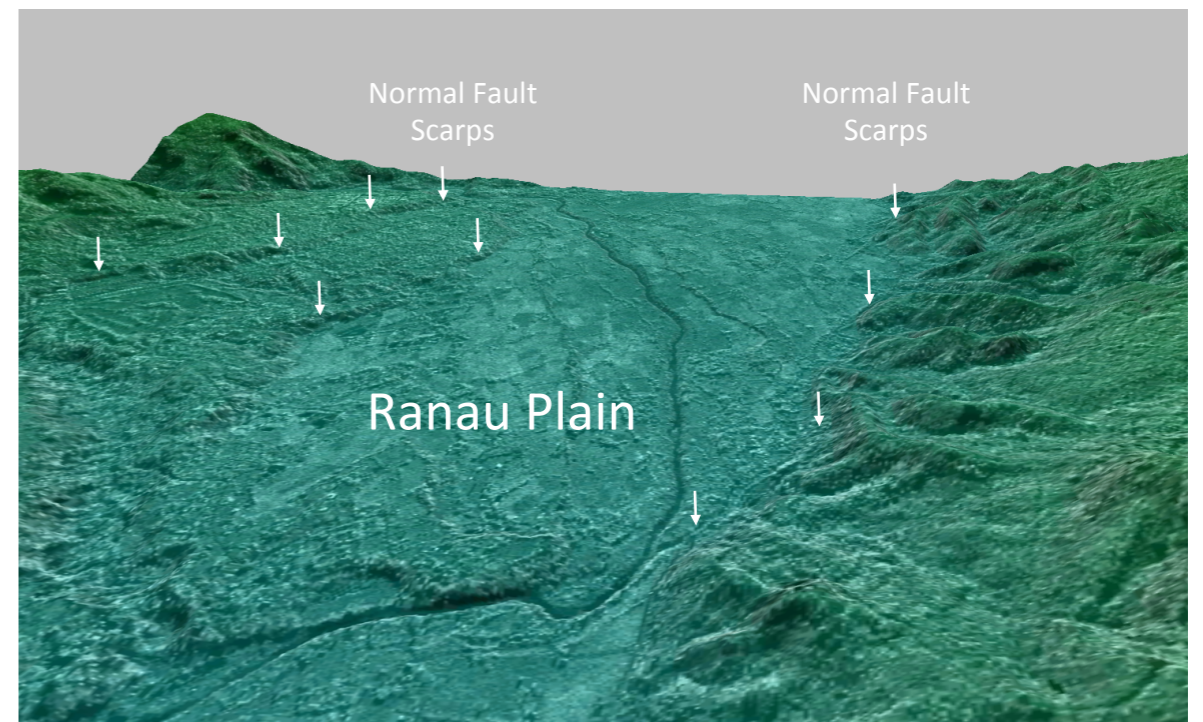
Relating seismicity to faults and tectonics



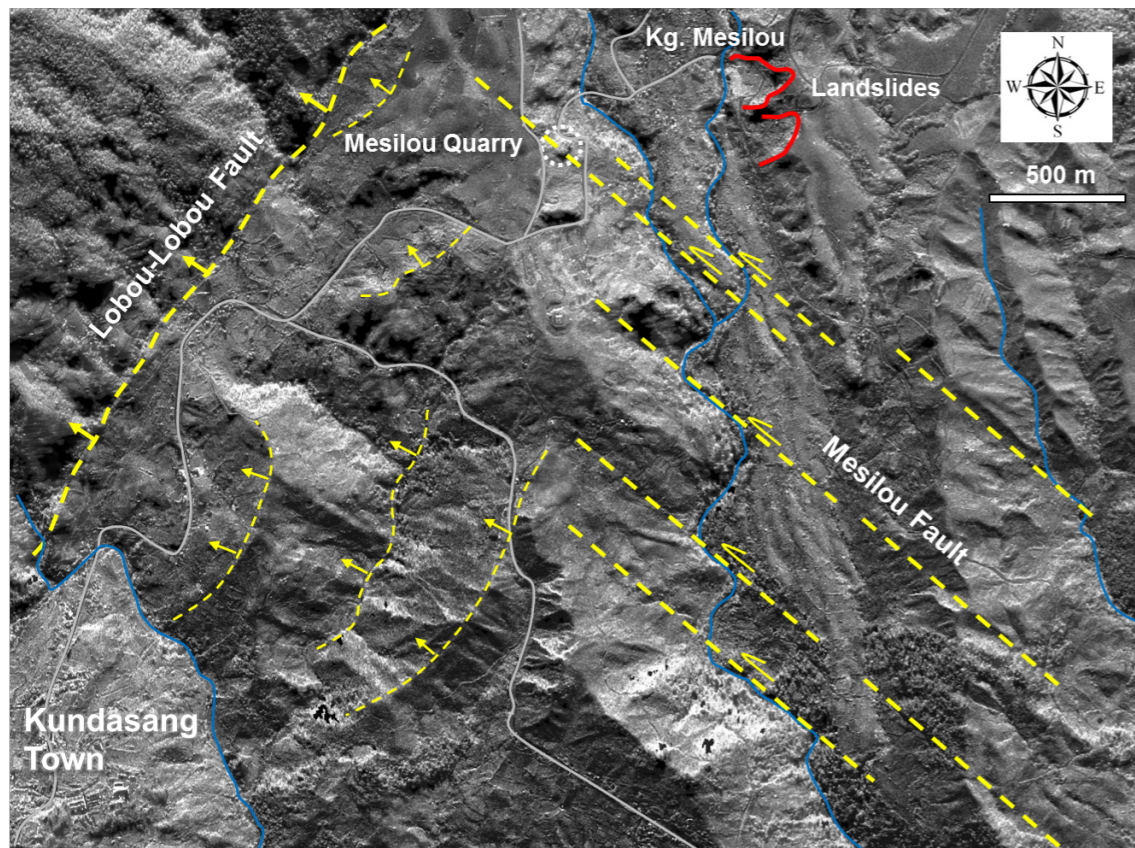
**IFSAR IMAGE OF RANAU PLAIN**



**3D IMAGE OF RANAU PLAIN**



**Potential Active Faults Based IFSAR Data**



**IFSAR IMAGE OF LAHAD DATU**

