

— PARA LA PAZ



SEISMIC BULLETIN
OBSERVATORIO SAN CALIXTO
LA PAZ - BOLIVIA
1 APRIL - 30 JUNE 1969

OBSERVATORIO

SAN CALIXTO

LA PAZ - BOLIVIA

SEISMOLOGICAL BULLETIN

1 April - 30 June

1969

Network Director
Rev. Ramón Cabré, S.J.

Assisted by

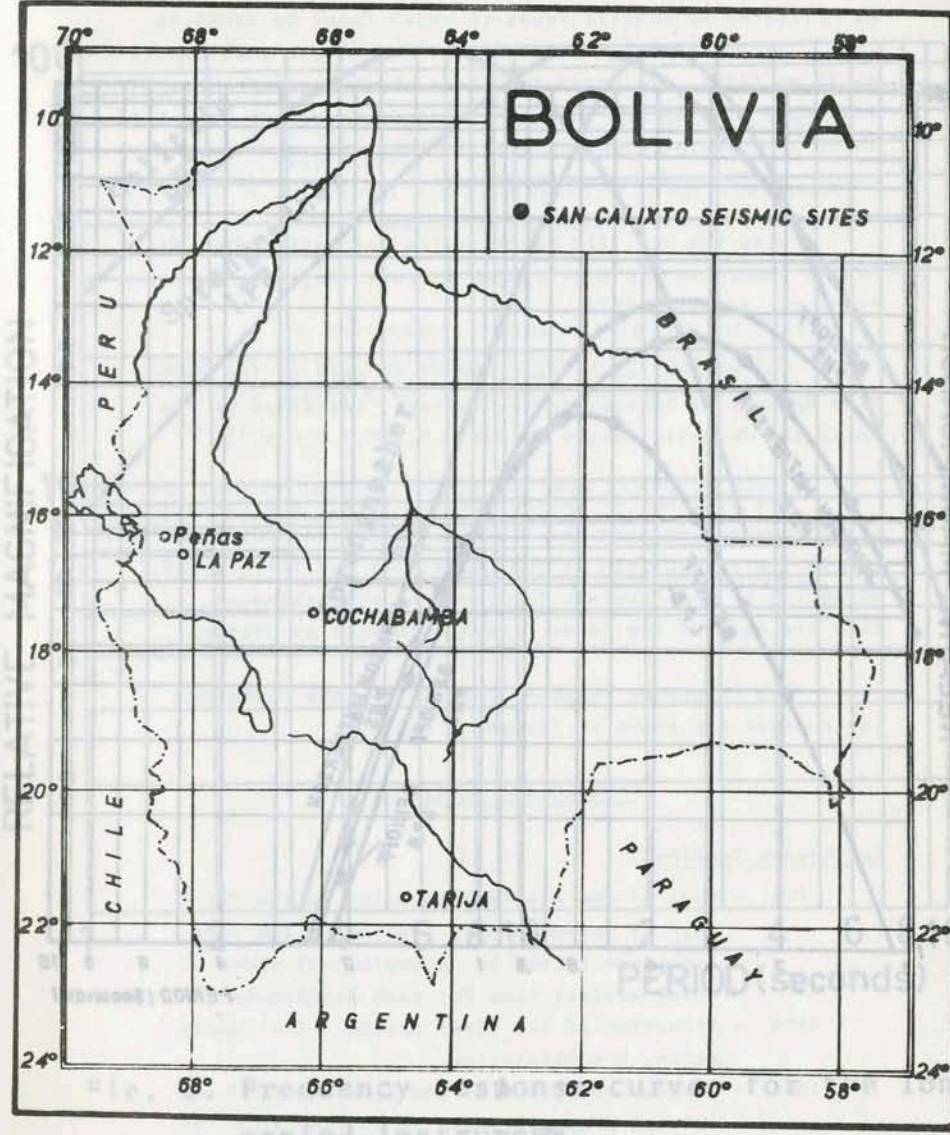
Hugo Bustillo (PNS)
Nelson Aguilar (LPB, LPZ)
Javier Ochoa (LPB, PNS)
Carlos Abastoflor (LPZ)

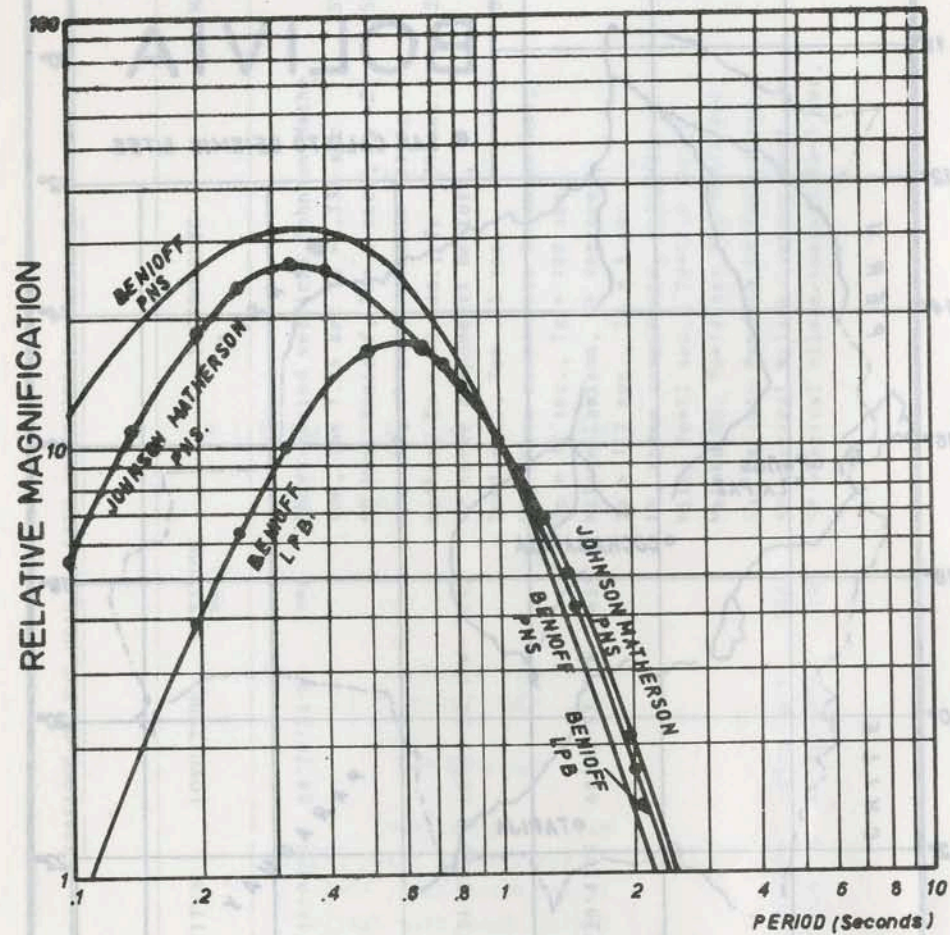
Casilla No. 5939

La Paz, Bolivia

STATIONS OF THE "SAN CALIXTO OBSERVATORIO" NETWORK

LOCATION	CODE	LATITUDE	LONGITUDE	ALTITUDE (Mts)	INSTRUMENTS	MAGNIFICATION
Peñas	PNP	16°16'02"S	68°28'24"W	3986	Short-period vertical Johnson-Mathe son, To= 1.25 sec Tg = .337 sec SP Hor. Benioff, To= 1 sec., Tg =2 sec. IP, three components Spreng- nether, To = 20 sec., Tg = .30 sec. SP three components Benioff, To=1 sec., To= .75 sec.	250,000 at 1 cps 250,000 at 1 cps 20,000 at 25 sec 50,000 at 1 cps
La Paz (WVSS)	LPB	16°31'57.6"S	68°05'54.1"W	3292	IP, three components Sprengnether, To = 15 sec., Tg = 100 sec. Wilson-Lamison, SP vertical, To = 1.2 sec., Tg = 1 sec. IP, three components, Galitzing- Wilip To=12 sec., Tg=12.6 sec.	1,000 at 12 sec 180 and 300 700
La Paz (Colegio)	LPZ	16°29'43"S	68°07'57.7"W	3658	Mainka, NS, To=14 sec. EW, To=12 sec. San Calixto Pendulo EW, To=2.4 sec. SP vertical Wilson-Lamison To=1 sec. SP vertical Wilson-Lamison To=3 sec.	
Cochabamba	COB	17°22'56"S	66°08'34"W	2500		
Tarija	TPT	21°30'47"S	64°46'34"W	2100		





4

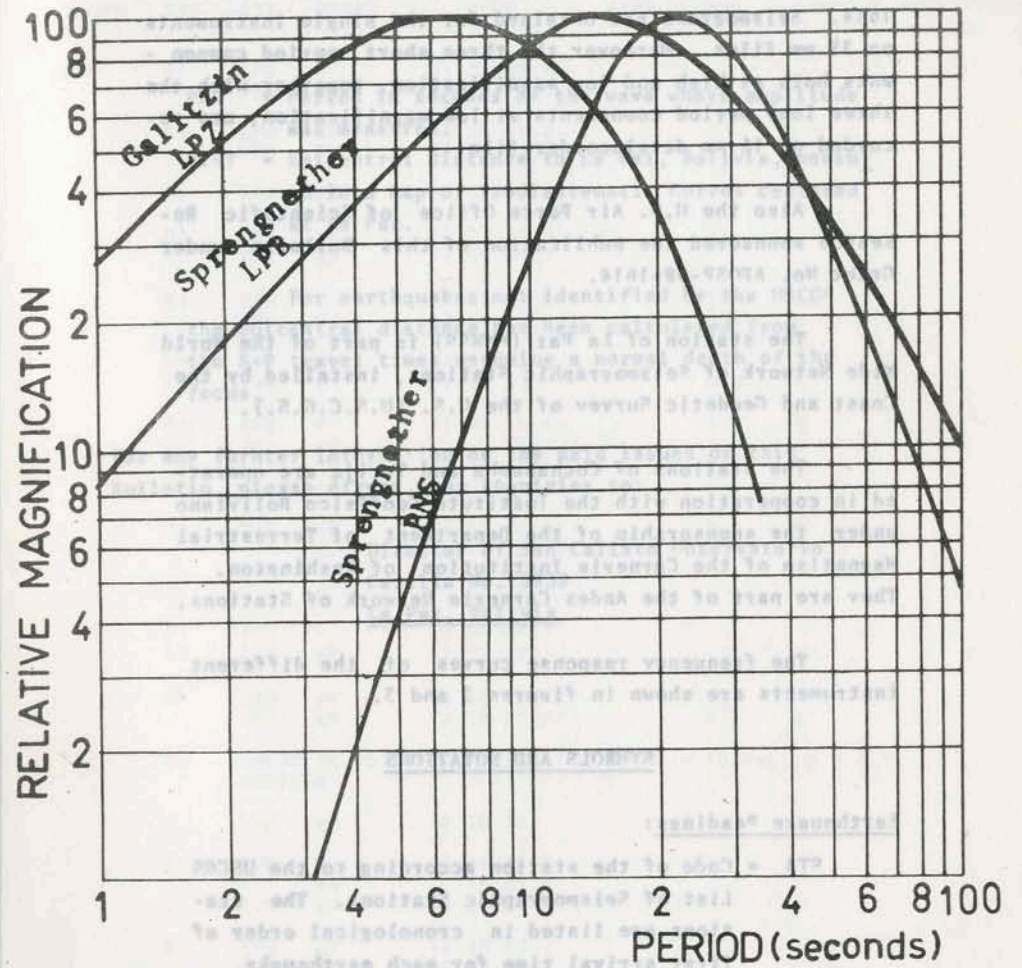


Fig. 2. Frequency response curves for the long period instruments.

APRIL

MONTH	DAY	STA	PHASE	TIME	SIGN	PER	AMPL	DIST
APR	01	LPB	P	01 27 33.5				
		PNS	eP	01 27 37.4				
01	LPB	eP	01 36 49.2					
		PNS	P	01 36 49.6				
01	LPB	eP	01 53 40					
		PNS	P	01 53 40				
01	LPB	eP	02 29 55.6					
		PNS	eP	02 30 00.7				
01	LPB	P	03 18 52.6		1.0	16		
		PNS	P	03 18 56.6		0.6	6	
01	LPB	eP	04 04 53.4		0.4	4		
		PNS	P	04 04 57				
01	PNS	P	07 00 36.4		0.5	8		
		eS	07 00 59.4					
01	LPB	P	07 00 38.5		0.7	7		
		eS	01 03.4					
01	PNS	eP	07 17 50.4		0.5	3		
		S	18 20					
01	LPB	eP	07 17 51					
		S	18 20.5					
01	PNS	P	12 50 08.2					
		LPR	eP	12 50 12				
01	LPB	eP	14 38 39		0.4	4		
		PNS	eP	14 38 41.6				
01	USCGS 16 45 09.1, 47.9N, 114.3W, h = 10 km., m = 4.7 MONTANA							
	PNS	eP	16 56 56					
01	PNS	P	18 14 38.8					
		eS	15 02.6					
01	LPB	eP	18 14 42					
01	LPB	eP	18 48 45					
		PNS	eP	18 48 46.2				
01	LPB	eP	20 42 24					
		PNS	P	20 42 27.8	C	0.5	6	
01	USCGS 21 19 53.6, 12.7N, 88.2W, h = 71 km., m = 4.9 OFF COAST OF CENTRAL AMERICA							
	PNS	P	21 26 41.2		1.2	34		
		S	32 15					
		L	38.5					
	LPB	P	21 26 44.4		1.0	24		35
		eL	37					

APRIL

MONTH	DAY	STA	PHASE	TIME	SIGN	PER	AMPL	DIST
APR	02	LPB	eP	00 18 56.6				
			S	19 31.4				
		PNS	P	00 18 58				
			S	19 36.6				
	02	PNS	P	01 09 20	D			
			LPB	P	01 09 20.8		0.8	52
	02	LPB	eP	01 14 21.4				
	02	LPB	P	01 20 04				
			PNS	e(P)	01 20 05.2			
	02	USCGS 01 30 01.9, 39.0N, 15.3E, h = 258 km., m = 4.8 SOUTHERN ITALY						
		PNS	eP	01 51 20.4				
	02	LPB	eP	02 02 59				
			PNS	eP	02 03 01.6			
	02	LPB	eP	02 11 13				
	02	PNS	P	03 04 08.6	C	0.3	3	
			S	31.8				
		LPB	eP	03 04 11				
			PNS	eP	03 11 35.4			
	02	LPB	P	03 11 40.5				
			PNS	P	03 11 40.5			
	02	LPB	P	06 17 34				
			S	18 10				
		PNS	eP	06 17 35				
			PNS	P	07 05 03.1	D	0.3	3
	02	LPB	P	07 05 03.7				
			PNS	P	07 40 35.4	D		
		S		57.4				
			02	USCGS 07 24 06.4, 8.0S, 110.4E, h = 105 km., m = 5.6 JAVA				
	LPB	PKP		07 43 52.3				
		PNS	ePKP	07 43 52.8			156	
		PNS	i	44 20				
			02	PNS	P	08 03 54.4	C	0.4
S	04 22.8							
		LPB	eP	08 03 56.4				
			eS	04 23.2				
	02	EPB	eP	10 46 51				
			PNS	P	10 46 53.2			

APRIL

MONTH	DAY	STA	PHASE	TIME	SIGN	PER	AMPL	DIST
APR	02	LPB	eP	11 06 38				
			PNS	P	11 06 38.8			
	02	LPB	P	11 44 35.4		0.6	21	
			PNS	P	11 44 38.9	C	0.6	18
	02	PNS	P	15 37 47.4				
			S	38 12.6				
	02	LPB	eP	17 21 20				
			PNS	P	17 21 24.2		0.6	7
	02	LPB	eP	18 32 06.2				
			PNS	P	18 32 08.2		0.6	3
	02	PNS	eP	18 57 12.6				
			LPB	eP	18 57 15			
	02	PNS	iP	19 42 47.8	D			
			USCGS 19 30 27.3, 13.3N, 121.2E, h = 13 km., m = 5.0 MINDORO, PHILIPPINE IS					
		PNS	ePKP	19 50 38				
			02	LPB	eP	21 02 37		
PNS	eP	21 02 40						
	02	LPB	P	21 37 35.8		0.2	59	
			02	PNS	P	22 46 46.5		0.8
S	47 07.6							
	02	LPB	P	22 56 19		1.0	24	
			PNS	P	22 56 22.6	C	0.5	5
	02	LPB	eP	23 53 02				
			PNS	P	23 53 07		0.5	5
	03	LPB	eP	02 17 32.2		0.8	9	
			S	18 22.1				
		PNS	eP	02 17 40				
			S	18 29.8				
	03	LPB	eP	03 02 21.5				
			S	03 02				
		PNS	eP	03 02 28.5				
			S	03 12.6				
	03	PNS	eP	03 49 31				
			LPB	eP	03 49 36.5			
	03	LPB	P	04 12 45				
			PNS	eP	04 12 46.8			

APRIL

MONTH	DAY	STA	PHASE	TIME	SIGN	PER	AMPL	DIST
APR	03	USCGS BANDA	04 08 25.2, 7.2S, 128.9E, h = 107 kms., m = 4.9					
		LPB	PKP	04 28 04.4		1.0	12	151
			i	09.5				
		PNS	ePKP	04 28 04.6				
			i	10				
	03	PNS	eP	06 56 55				
			S	57 20				
		LPB	eP	06 57 02				
	03	PNS	P	07 17 55.6	D	0.5	18	
			S	18 21.3				
		LPB	eP	07 17 59.7				
	03	LPB	eP	07 57 49				
	03	LPB	eP	08 17 03.6				
	03	LPB	P	09 28 26.6				
			S	29 11.2				
		PNS	e(P)	09 28 41.4				
			i	29 29				
	03	LPB	eP	15 10 54.3				
	03	USCGS BANDA	15 02 35.1, 6.5S, 130.5E, h = 40 km., m = 5.2					
		LPR	PKP	15 22 27		0.8	60	150
		PNS	PKP	15 22 27.2	C	0.8	38	
			eL	16 18.3				
	03	PNS	P	16 39 39.4		0.6	8	
		LPB	eP	16 39 43				
	03	USCGS NORTH OF HALMAHERA	19 20 46.7, 3.8N, 128.1E, h = 80 km., m = 5.2					
		PNS	ePKP	19 40 23.6				
	03	LPB	e(P)	20 43 45				
	03	USCGS ALBANIA	29 12 23.8, 40.7N, 19.9E, m = 5.1					
		LPB	eP	21 26 09				99
		PNS	eP	21 26 06				
	03	LPB	eP	22 29 25.5				
	03	LPB	P	22 48 43		0.8	15	
		PNS	P	22 48 43.4	C	0.4	8	
	03	LPB	eL	22 58				
	03	LPB	eP	23 42 57.5				

12

APRIL

MONTH	DAY	STA	PHASE	TIME	SIGN	PER	AMPL	DIST
APR	04	LPB	P	00 30 46				
			eS	56				
		PNS	P	00 30 47				
			eS	31 46.7				
	04	LPB	eP	02 37 42				
	04	USCGS SOUTHERN PERU	03 23 38.4, 16.3S, 71.7W, h = 158 km.,					
		PNS	1P	03 24 28.5	C	0.4	25	
		LPB	P	03 24 33		0.9	51	4
	04	PNS	P	04 13 37.4		0.4	21	
		LPB	eP	04 13 41.5				
	04	PNS	P	04 39 14.6	D	0.6	16	
		LPB	P	04 39 17.2		0.7	8	
	04	LPB	eP	05 09 41				
		PNS	P	05 09 44.8		0.4	2	
	04	PNS	eP	06 34 50				
		LPB	eP	06 34 55		1.0	10	
	04	PNS	P	06 47 41.8				
		LPB	P	06 47 48				
	04	LPB	eP	06 54 43				
		PNS	eP	06 54 43.2				
	04	LPB	eP	07 04 21				
	04	LPB	P	08 46 49.5		0.7	8	
		PNS	P	08 46 52.7	D	0.5	8	
	04	USCGS NEAR IS ALFUTIAN IS	08 45 18.7, 51.2N, 173.7E, m = 5.6					
		PNS	ePKP	09 04 08.5				
			eL	44.5				
		LPB	ePKP	09 04 05.8				120
			eL	43.7				
	04	PNS	eP	10 52 49.4		0.4	2	
	04	USCGS SOUTH SANDWICH REG	11 53 37.8, 56.1S, 27.2W, h = 123 km., m = 4.9					
		LPB	P	12 02 23.5		0.5	14	50
		PNS	P	12 02 26.1		0.8	11	

13

APRIL 1984

MONTH	DAY	STA	PHASE	TIME	SIGN	PER	AMPL	DIST	
APR	04	USCGS 12 58 24.1, 1.2N, 85.2W, m = 5.3 OFF COAST OF ECUADOR							
		PNS	iP	13 03 37.6	C	1.4	193		
			i	08 01					
			eL	12.3					
		LPB	eP	13 03 41.3		1.7	510	23	
			i	08 07					
			eL	12					
	04	USCGS 13 56 03.2, 22.9N, 120.0E, h = 46 km., m = 5.2 TAIWAN							
		LPB	ePKP	14 15 08.5				170	
		PNS	ePKP	14 16 06.8		1.4	10		
	04	PNS	P	15 36 42		0.6	5		
			S	37 06.6					
	04	USCGS 16 16 17.2, 24.4N, 109.8W, h = 31 km., m = 5.6 GULF OF CALIFORNIA							
		PNS	iP	16 26 03.2	D	1.6	162		
			S	34 04					
			eL	45.4					
		LPB	P	16 26 06.5		1.6	195	58	
			eL	41					
	04	PNS	P	16 36 35.8		0.5	8		
		LPB	P	16 36 40.5					
	04	PNS	e(P)	16 53 46.8					
	04	LPB	eP	18 40 49.7					
			eS	41 54					
		PNS	eP	18 40 53					
	04	PNS	P	18 56 09.6					
			eS	32					
		LPB	eP	18 56 04					
	04	PNS	P	20 04 06.4					
		LPB	eP	20 04 10					
	04	PNS	eP	20 55 22					
			S	45					
	04	PNS	eP	22 05 21.4					
	04	USCGS 22 57 16.8, 54.5N, 169.4E, h = 27 km., m = 5.4 KOMANDORSKY ISLANDS REGION							
		LPB	P	23 16 11		0.6	11	122	
			eL	55					
		LPB	eL	22 58					
		LPB	eP	23 42 57.5					

14

APRIL 1984

MONTH	DAY	STA	PHASE	TIME	SIGN	PER	AMPL	DIST	
APR	05	PNS	eP	00 29 00.6					
		LPB	eP	00 29 06					
	05	PNS	P	01 08 40					
			i	43.8					
		LPB	P	01 08 41					
	05	PNS	eP	02 32 25				102	
		LPB	eP	02 32 25.2					
	05	USCGS 02 18 29.9, 18.3N, 41.2E, h = 17 km., m = 6.2 ETHIOPIA							
		LPB	ePKP	02 37 08.5				112	
			eL	12.8					
		PNS	eL	03 13					
	05	LPB	P	02 42 18		0.6	9		
		PNS	P	02 42 20.4		0.6	14		
	05	LPB	P	03 58 09.6		0.8	17		
		PNS	P	03 58 13.6		0.5	8		
	05	USCGS 03 44 36.7, 3.4N, 125.4E, h = 150 km., m = 5.4 TALAUD IS.							
		LPB	ePKP	04 04 24.3				161	
			e	05 13.5					
		PNS	ePKP	04 04 23.7					
	05	PNS	P	04 10 55.1		0.3	9		
			S	11 25.8					
		LPB	eP	04 11 00					
	05	USCGS 04 04 10.8, 3.4N, 128.2E, h = 55 km., m = 5.3 NORTH OF HALMAHERA							
		LPB	PKP	04 24 09.2				159	
			PKP2	47.6					
		PNS	ePKP	04 24 09.3					
			PKP2	47.5					
	05	USCGS 06 53 39.2, 54.7S, 143.8E, m = 5.2 WEST OF MACOUARIE IS							
		LPB	ePKP	07 12 59				134	
			eL	59.5					
		PNS	ePKP	07 13 00.4					
	05	USCGS 06 18 03.6, 22.1S, 66.3W, h = 276 km., m = 4.2 JUJUY, PROV. ARGENTINA							
		LPB	iP	06 19 31.5	D	0.7	84	6	
			S	20 47					
		PNS	iP	06 19 35.3	D	0.7	36		
			e	20 44.6					

15

APRIL

APRIL

MONTH	DAY	STA	PHASE	TIME	SIGN	PER	AMPL	DIST	
APR	05	PNS LPB	eP eP	07 25 51.2 07 25 53					
	05	LPB PNS	P S P	09 16 47 17 18 09 16 47.3		0.7	7		
	05	PNS LPB	P P	10 03 10 10 03 15.3		0.9	18		
	05	PNS LPB	eP eP	10 55 03.4 10 55 10					
	05	LPB	P	12 19 21.4					
	05	LPB PNS	eP L eP	12 54 43.6 13 10 12 54 45.4					
	05	PNS LPB	P eP	13 07 07.6 13 07 12					
	05	PNS LPB	eP eP	16 35 36.6 16 35 44					
	05	LPB	eP	21 15 22.4					
	05	USCGS 22 16 01.1, 1.6N, 84.9W, m = 4.2 OFF COAST OF ECUADOR							
		PNS LPB	P eL P e e(G) eL	22 21 15.8 30.1 22 21 19.4 26 00 28 30		0.8 1.0	16 24	23	
	05	USCGS 23 26 11.5, 1.2N, 85.2W, h = 31 km., m = 5.8 OFF COAST OF ECUADOR							
		PNS LPB	P i L P eL	23 31 22.4 27.6 39.4 23 31 30.5 38.8		4.0	9779	23	
	06	USCGS 00 34 47.6, 1.8N, 85.0W, m = 4.2 OFF COAST OF ECUADOR							
		PNS LPB	P P	00 40 03.4 00 40 07.4		0.7 0.9	12 17	23	

16

MONTH	DAY	STA	PHASE	TIME	SIGN	PER	AMPL	DIST	
APR	06	PNS LPB	P eP	01 23 36.4 01 23 40.5		0.6	7		
	06	LPB	e(P)	02 34 38.5					
	06	LPB PNS	P eS P i	03 10 44.5 11 25.4 03 10 47.4 54.8		0.8	36		
	06	USCGS 03 49 33.5, 38.5N, 26.4E, h = 14 km., m = 5.5 AFGEAN SEA							
		LPB PNS	eP eP	04 03 37 04 03 38				104	
	06	PNS LPB	eP eP	04 52 38.1 04 52 39					
	06	PNS LPB	eP S eP	07 16 34.5 17 06.2 07 16 38		0.4	2		
	06	LPB	e(P)	09 05 47					
	06	PNS	eP	12 56 32					
	06	LPB	eP	13 21 22.7					
	06	PNS	eP S	16 12 37.6 13 03					
	06	PNS LPB	iP S eP S	16 31 06.5 31 16 31 09 37					
	06	LPB PNS	eP eP	17 05 42.6 17 05 43.6					
	06	LPB	eP	17 35 25.5					
	06	USCGS 20 08 32.4, 56.3S, 26.9W, h = 93 km., m = 5.8 SOUTH SANDWICH IS REG							
		LPB PNS	iP eS iP S	20 17 23 24 27 20 17 26 24 34.2		1.0	172	50	
	06	LPB PNS	P S P	20 22 24.2 24 29 20 22 26.1					

17

APRIL 1974

MONTH	DAY	STA	PHASE	TIME	SIGN	PER	AMPL	DIST	
APR	06	LPB	P	20 31 56		1.2	120		
			eS	20 32 32					
		PNS	iP	20 32 00.1	C				
			iS	40					
	06	LPB	P	23 57 43.8					
	07	PNS	eP	01 50 34					
		LPB	eP	01 50 39.5					
	07	LPB	P	02 48 00					
	07	PNS	P	02 50 42.6		0.5	7		
			S	51 20.4					
		LPB	P	02 50 47.8		1.2	18		
			eS	51 31.5					
	07	PNS	eP	02 55 40.8					
		LPB	eP	02 55 42.5					
	07	USCGS 03 39 47.7, 4.4N, 127.9E, h = 70 km., m = 5.1 TALAUD IS							
		PNS	ePKP	03 59 56.4					
			PKP2	04 00 33					
		LPB	ePKP	03 59 57.2			159		
			PKP2	33.4					
	07	LPB	e(P)	04 18 21					
	07	LPB	P	05 08 52.1					
		PNS	P	05 08 55.6					
	07	PNS	eP	09 41 35.6					
		LPB	eP	09 41 40					
			e	44 09.2					
	07	PNS	P	13 37 28.6		0.4	4		
	07	LPB	eP	16 35 05					
		PNS	eP	16 35 07					
	07	LPB	eP	17 14 48					
		PNS	P	17 14 49					
	07	LPB	eP	17 24 34.8					
	07	USCGS 18 49 32.9, 14.5S, 73.4W, h = 96 km., m = 4.3 PERU							
		PNS	iP	18 50 47.9	C				
		LPB	P	18 50 53.8		0.6	23	5	
	07	PNS	P	19 21 42.3		0.6	10		
	07	LPB	e(P)	20 28 11					

APRIL 1974

MONTH	DAY	STA	PHASE	TIME	SIGN	PER	AMPL	DIST	
APR	07	PNS	eP	20 39 55					
	07	PNS	iP	23 02 00	D				
			S	24.8					
		LPB	P	23 02 02.8		0.9	22		
			eS	30					
	08	PNS	P	00 04 08.8		0.8	6		
		LPB	P	00 04 14		0.9	11		
	08	LPB	P	00 18 31.4					
	08	PNS	eP	01 02 09.6					
	08	PNS	P	01 30 37.2		0.9	8		
		LPB	P	01 30 42		1.0	10		
	08	LPB	P	02 43 44.6		0.5	8		
		PNS	P	02 43 44.8		1.0	8		
	08	PNS	P	02 47 32.9		1.0	13		
		LPB	eP	02 47 38					
	08	LPB	eP	03 44 05.5					
	08	PNS	eP	05 54 24					
	08	LPB	eP	06 18 17					
	08	LPB	P	08 23 26.5					
	08	PNS	eP	08 51 21.4					
		LPB	eP	08 51 19.4					
	08	PNS	eP	09 54 09					
		LPB	eP	09 54 12.6					
	08	USCGS 10 21 52.3, 1.4N, 126.3E, h = 69 km., m = 5.3 MOLUCCA PASSAGE							
		LPB	ePKP	10 41 43			159		
			eL	11 40.4					
		PNS	PKP	10 41 48.6					
	08	PNS	P	13 48 51		0.9	6		
		LPB	eP	13 48 55					
	08	LPB	eP	17 02 51.3					
		PNS	eP	17 02 56.2					
	08	LPB	P	18 24 53.6		1.0	30		
		PNS	P	18 24 54.7		0.5	6		
			i	25 01.2					

APRIL

MONTH	DAY	STA	PHASE	TIME	SIGN	PER	AMPL	DIST
APR	08	PNS	eP	19 09 08.1		0.7	4	
	08	USCGS 19 41 58.6, 12.7N, 88.3W, h = 76 km., m = 4.8 OFF COAST OF CENTRAL AMERICA						
		PNS	eP	19 48 45.6		1.0	5	
		LPB	eP	19 48 49.5		1.0	20	35
	08	USCGS 19 37 21.8, 44.1N, 128.6W, m = 4.8 OFF COAST OF OREGON						
		PNS	P	19 49 36.8				
		LPB	P	19 49 38.7				82
	08	LPB	eP	20 10 19				
		PNS	eP	20 10 23				
	08	LPB	eP	21 08 29				
		PNS	eP	21 08 32.1				
	08	LPB	eP	22 07 27.4				
		PNS	P	22 07 27.7				
	08	PNS	P	23 29 47.6		0.8	3	
		LPB	P	23 29 48.4		0.6	7	
	09	LPB	eP	03 42 35				
	09	LPB	P	04 39 47.5				
		PNS	P	04 39 51.6		0.5	4	
	09	LPB	P	05 41 50.5		0.5	7	
	09	PNS	P	07 12 18.8		0.5	5	
		LPB	iP	07 12 22				
	09	LPB	(P)	08 16 11.3				
	09	LPB	P	09 30 25		0.6	14	
		S		09 30 33				
	09	LPB	eP	10 13 41.5				
		PNS	P	10 13 44.2				
		S		10 13 44.2				
		S		10 13 44.2				
	09	LPB	eP	10 23 26.6				
		PNS	eP	10 23 30.8				
	09	PNS	eP	11 39 42.4		0.4	4	
	09	USCGS 11 43 47.6, 49.1S, 30.8E, h = 23 km., m = 5.8 SOUTH OF AFRICA						
		LPB	eP	11 56 16.3		1.8	129	83
		eL		11 56 24				
		PNS	P	11 56 18		1.4	50	

APRIL

MONTH	DAY	STA	PHASE	TIME	SIGN	PER	AMPL	DIST
APR	09	PNS	eP	12 06 00.2				
		LPB	eP	12 06 01.6				
	09	USCGS 12 57 24.8, 36.8N, 139.6E, h = 116 km., m = 5.5 HONSHU, JAPAN						
		PNS	PKP	13 16 57	C	1.0	29	
		LPB	PKP	13 16 57.2		1.3	64	148
	09	PNS	eP	14 09 30				
	09	PNS	P	14 30 33.4		0.8	5	
		LPB	eP	14 30 37				
	09	PNS	eP	15 38 18.8				
	09	PNS	P	15 45 10.7				
		LPB	P	15 45 19	C	1.0	30	
	09	PNS	eP	16 39 13.3				
		S		16 39 38				
	09	PNS	P	19 32 38.4				
	09	PNS	eP	21 32 22.2				
	09	USCGS 21 41 50.9, 7.3S, 156.0E, h = 51 km., m = 4.9 SALOMON IS						
		LPB	ePKP	22 00 55.5				130
		PNS	ePKP	22 00 59.3		0.9	6	
	09	PNS	P	22 41 59.5		0.5	6	
	10	LPB	eP	00 09 24				
		PNS	eP	00 09 26.7				
	10	LPB	eP	00 44 09.3				
		e(S)		00 44 40				
		PNS	eP	00 44 12.6				
	10	PNS	eP	03 22 12		0.5	2	
		LPB	eP	03 22 15				
	10	LPB	eP	04 04 11				
	10	LPB	eP	04 07 43				
	10	LPB	P	04 52 04.4				
		PNS	P	04 52 06.1				
		S		04 52 30.8				
	10	PNS	eP	04 55 22				
		LPB	eP	04 55 25.8				

APRIL

MONTH	DAY	STA	PHASE	TIME	SIGN	PER	AMPL	DIST
APP	10	PNS	P	05 02 36.6		0.4	5	
			iS	03 01.6				
		LPB	eP	05 02 39				
	10	LPB	P	05 43 30				
	10	LPB	eP	06 00 54.5				
			eS	01 39.3				
		PNS	eP	06 01 07.6				
			S	52.2				
	10	PNS	P	06 16 25.8				
			S	55.4				
		LPB	P	06 16 30		0.5	9	
			eS	17 03.2				
	10	PNS	P	06 25 18.1		0.4	9	
			S	40				
		LPB	eP	06 25 20.5				
	10	LPB	eP	07 00 25.3				
		PNS	P	07 00 28.6		0.6	4	
	10	LPB	eP	07 21 02				
		PNS	eP	07 01 04.8				
	10	PNS	P	07 49 18.9				
		LPB	P	07 49 21.8		0.6	12	
	10	PNS	eP	07 58 22.5				
		LPB	P	07 58 27.6		1.2	15	
	10	USCGS PERU		09 30 59.9, 10.1S, 74.9W, h = 99 km., m = 4.2				
		PNS	eP	09 33 07.2				
		LPB	eP	09 33 11.4				9
	10	LPB	eP	10 20 59.4				
	10	PNS	eP	10 44 48				
		LPB	eP	10 44 50.5				
	10	USCGS CHILE ARGENTINA BOR REG		11 08 06.9, 29.5S, 69.6W, h = 85 km., m = 4.4				
		LPB	P	11 11 08.5				13
			i	23.1				
		PNS	eP	11 11 12.1				
	10	LPB	P	13 53 36.5		0.9	42	
		PNS	P	13 53 40.8				
	10	USCGS F RUSSIA-N.F. CHINA BORDER REG.		14 54 03.9, 42.0N, 130.9E, h = 555 km., m = 5.6				
		PNS	ePKP	15 12 48.2	C	1.4	105	
		LPB	PKP	15 12 49	C	1.0	84	149

APRIL

MONTH	DAY	STA	PHASE	TIME	SIGN	PER	AMPL	DIST
APR	10	PNS	P	18 13 45.2		0.4	3	
			S	14 15.4				
	10	PNS	eP	20 53 12.8				
	10	USCGS PERU ECUADOR BOR REG		21 32 22.2, 4.9S, 78.1W, h = 110 km.,				
		PNS	P	21 35 51.6		1.2	48	
		LPB	P	21 35 53		0.8	15	14
	10	USCGS JAVA		21 57 04.1, 7.4S, 105.9E, h = 62 km., m = 5.1				
		PNS	ePKP	22 16 56.6				
			e	18 25.6				
		LPB	ePKP	22 18 02				155
	11	PNS	eP	00 40 11.6				
		LPB	eP	00 40 12				
	11	PNS	P	01 11 50				
	11	PNS	eP	01 26 05.2		0.5	3	
		LPB	eP	01 26 07.2				
	11	PNS	eP	02 40 43				
		LPB	eP	02 40 44.2				
	11	PNS	eP	02 41 36.6				
			S	42 18.8				
		LPB	eP	02 41 39				
	11	LPB	eP	05 20 45.4				
			e	21 19.5				
		PNS	eP	05 20 46.8				
	11	LPB	eP	06 32 34.6				
		PNS	eP	06 32 37				
	11	LPB	eP	08 00 38.2				
		PNS	eP	08 00 43.4				
	11	LPB	eP	08 33 51.8				
	11	LPB	eP	08 43 38				
		PNS	eP	08 43 41.4				
	11	PNS	P	16 29 18.2				
	11	LPB	P	21 52 45.5				
		PNS	eP	21 52 53.1				
	11	LPB	eP	23 44 45.5				
		PNS	eP	23 44 46.6				

APRIL

MONTH	DAY	STA	PHASE	TIME	SIGN	PER	AMPL	DIST
APR	11	LPB PNS	P P	23 56 30.5 23 56 32.7		0.7 1.2	88 35	
	12	USCGS 23 45 04.4, 1.3N, 126.4E, h = 53 km., m = 4.7 MOLUCCA PASSAGE						
		PNS LPB	ePKP ePKP	00 05 02 00 05 03				159
	12	PNS	P	00 13 47.4		0.6	6	
	12	PNS LPB	P P	00 34 12.6 00 34 12.5		0.6 0.7	7 16	
	12	LPB PNS	P P	01 33 55.7 01 33 56.8				
			i	34 29				
	12	LPB	eP	03 16 00				
	12	PNS LPB	eP eP	04 04 55.7 04 04 56.5				
	12	PNS	P	04 53 45.5				
	12	LPB PNS	eP eP	04 57 15 04 57 19				
	12	PNS	P	08 18 52.1		0.7	4	
			eS	20 37.6				
	12	PNS	eP	08 59 47				
	12	USCGS 09 05 49.6, 4.9S, 151.5E, h = 134 km., m = 5.1 NEW BRITAIN REG						
		LPB PNS	ePKP ePKP	09 24 56 09 24 58.6				135
	12	LPB PNS	eP e(P) eS	11 03 07 11 03 10 38.2				
	12	USCGS 10 45 16.9, 10.2N, 126.3E, h = 11 km., m = 5.3 PHILIPPINE IS REG						
		PNS LPB	ePKP ePKP	11 05 23.8 11 05 24				165
	12	PNS LPB	eP eP	13 44 13 13 44 20				
	12	PNS	eP	15 31 55.5				
	12	LPB	P	15 49 43		0.7	16	

APRIL

MONTH	DAY	STA	PHASE	TIME	SIGN	PER	AMPL	DIST
APR	12	LPB	eP	22 58 07.5				
	12	PNS	P S	23 42 36.2 43 01		0.6	4	
	13	PNS LPB	eP eP	00 48 41.8 00 48 42.2				
	13	LPB	eP	01 44 41.4				
			eS	46 12.4				
		PNS	P	01 44 45.4		0.7	10	
			eS	46 21.5				
	13	LPB PNS	P P	02 30 11.4 02 30 13.5		0.7	7	
	13	PNS LPB	P eP	03 30 15.5 03 30 20		0.7	4	
	13	LPB PNS	eP P	08 53 16.3 08 53 18.7		0.3	4	
	13	PNS	eP	09 25 38.8				
			eS	26 32.4				
	13	PNS	P	10 21 56.2	D			
			S	22 25				
		LPB	P	10 22 00				
			S	22 33.5				
	13	PNS	P	11 33 12.5		0.8	13	
			S	35.8				
		LPB	eP	11 33 17				
			eS	36.5				
	13	USCGS 13 12 37.1, 29.3N, 129.5E, h = 41 km., m = 5.0 RYUKYU IS						
		PNS LPB	ePKP ePKP	13 32 34 13 32 35.7				159
	13	USCGS 15 24 55.6, 17.9N, 80.6E, m = 5.3 INDIA						
		LPB	PKP	15 44 42.5	D	1.0	24	150
			eL	16 39				
		PNS	PKP	15 44 42.8		1.6	70	
			eL	16 38.5				
	13	USCGS 17 15 36.1, 45.6S, 76.1W, h = 33 km., m = 4.6 OFF COAST SOUTHERN CHILE						
		PNS	eP	17 21 44.4				
			eL	30.8				
		LPB	eP	17 21 45				30
			eL	30				

APRIL

MONTH	DAY	STA	PHASE	TIME	SIGN	PER	AMPL	DIST	
APR	13	PNS LPB	eP eP	17 44 08 17 44 10.6					
	13	USCGS 18 06 37.9, 45.6S, 76.6W, m = 4.9 OFF COAST OF SOUTHERN CHILE							
		LPB PNS	eP eP	18 12 45.5 18 12 47				30	
	13	USCGS 23 33 15.4, 6.1S, 129.9E, h = 152 km., m = 5.9 BANDA SEA							
		PNS LPB	PKP eL P i eL	23 52 49.4 00 45.8 23 52 59 00 15 46 47.5				151	
	14	PNS LPB	P P	00 20 58.2 00 21 02					
	14	USCGS 02 14 35.8, 36.3S, 72.8W, h = 45 km., m = 4.1 NEAR COAST CENTRAL CHILE							
		LPB PNS	P P	02 19 09.5 02 19 11.4				20	
	14	PNS	eP	03 29 15.4					
	14	PNS	iP S	03 40 03.8 26	D				
	14	LPB	P	05 35 45					
	14	LPB	e(P)	06 09 35					
	14	USCGS 07 00 01.7, 5.2S, 104.3E, h = 102 km., m = 5.7 SOUTHERN SUMATRA							
		LPB PNS	PKP PKP	07 19 49.5 07 19 50.7		1.0 1.0	12 9	157	
	14	PNS LPB	eP eP	08 08 26.8 08 08 33.2					
	14	PNS	P S	08 55 35.5 56 00.7					
	14	USCGS 13 13 21.8, 27.8N, 54.7E, h = 44 km., m = 5.0 SOUTHERN IRAN							
		PNS LPB	ePKP ePKP	13 32 24.6 13 32 25				126	
	14	PNS	eP	13 50 21.2					

APRIL

MONTH	DAY	STA	PHASE	TIME	SIGN	PER	AMPL	DIST	
APR	14	PNS	eP eS	15 14 06 28					
	14	PNS	P	20 20 29.3		0.5	6		
	14	USCGS 23 17 35.9, 21.6S, 70.8W, m = 4.6 NEAR COAST OF NORTHERN CHILE							
		PNS LPB	P eP	23 19 02.4 23 19 03		0.5	10	6	
	15	PNS	P S	01 20 52.4 21 15.6		0.5	3		
	15	PNS	eP S	01 56 48.4 57 10.7					
	15	LPB PNS	eP eP	04 43 39 04 43 41					
	15	PNS LPB	eP e(P)	04 58 07 04 58 10					
	15	LPB PNS	P eP	06 56 04.5 06 56 05.3		0.4	2		
	15	USCGS 07 11 38.6, 21.9S, 61.7W, h = 541 km., m = 4.0 PARAGUAY							
		LPB S PNS	P S P S	07 13 39 15 15 07 13 43 15 22.6		0.7	19	8	
	15	LPB PNS	P eS P eS	08 24 10.5 25 03 08 24 14.6 25 12		0.6	8		
	15	PNS	eP	10 05 11.8					
	15	PNS	P	14 36 55.4		1.0	8		
	15	PNS	P	16 36 14.6		0.6	4		
	15	PNS	eP eS	17 26 21.5 27 10					
	15	USCGS 17 30 55.8, 39.8N, 143.4E, h = 20 km., m = 5.3 OFF EAST COAST OF HONSHU, JAPAN							
		LPB PNS	ePKP eL ePKP eL	17 50 30 40 17 50 30.6 18 39				144	

MONTH	DAY	STA	PHASE	TIME	SIGN	PER	AMPL	DIST
APR	15	USCGS 17 50 NEW GUINEA		20.8, 6.5S, 143.0E, h = 31 km., m = 5.3				
		PNS	ePKP	18 09 57				
	15	PNS	P	18 18 32.5				
	15	PNS	eP	18 40 46.4				
	15	PNS	P S	18 49 08.6 30.8		0.5	5	
	15	PNS	P S	21 00 02.6 32		0.4	6	
	15	USCGS 21 08 NEW GUINEA		12.8, 6.1S, 142.9E, h = 14 km., m = 5.1				
		PNS	ePKP	21 27 36				
	15	PNS LPB	eP eP	21 45 33 21 45 39.6				
	15	USCGS 22 15 JAVA SEA		09.6, 5.9S, 113.2E, h = 575 km., m = 5.6				
		LPB PNS	PKP PKP PKP2	22 34 04.4 22 34 05.2 41.4		1.1 1.5	60 130	157
	16	PNS	eP S	00 41 14 43 03.4				
	16	PNS LPB	P S eP eS	00 47 02.6 24.4 00 47 04 27		0.4	7	
	16	USCGS 00 52 CHILE-BOLIVIA BOR REG		13.3, 21.2S, 68.5W, h = 125 km., m = 4.3				
		LPB PNS	P LP	00 53 25.6 00 53 29		0.6	4	4
	16	PNS LPB	P S eP S	01 15 14.3 45.2 01 15 21.6 16 00.5				
	16	USCGS 01 22 NEW IRELAND REG		47.5, 3.5S, 151.0E, h = 39 km., m = 5.7				
		PNS	ePKP SS eL	01 42 01.6 02 02 54 02 27.2				

MONTH	DAY	STA	PHASE	TIME	SIGN	PER	AMPL	DIST
APR		LPB	ePKP i(SS) eL	01 42 08 02 03 00 02 27.4				136
	16	PNS	P S	02 02 20.5 43.5		0.6	10	
		LPB	eP S	02 02 20.8 44.6				
	16	PNS	P S	05 33 37.8 34 00		0.4	14	
	16	PNS	eP	05 47 18.8				
	16	LPB	P	07 46 08.6				
	16	USCGS 04 27 NEAR COAST OF PERU		37.3, 16.6S, 73.7W, h = 56 km., m = 4.4				
		PNS	P i eS L	09 28 55.2 57.3 30 12 30.7		0.7	11	
		LPB	P i e(S)	09 28 59.4 29 03.7 30 27.8		0.8	17	5
	16	USCGS 12 19 NEW HEBRIDES IS		40.1, 13.6S, 166.9E, h = 153 km., m = 5.7				
		PNS LPB	P P	12 38 11.5 12 38 12.4		1.0	17	117
	16	PNS LPB	eP eP	14 04 10.7 14 04 14				
	16	PNS	eP	15 30 10.6				
	16	PNS	eP	18 03 21		0.4	5	
	16	PNS	eP S	20 52 54.5 54 03.4				
		LPB	eP	20 53 01.7				
	16	PNS LPB	P eP	22 03 47 22 03 50.5		0.6	3	
	16	LPB PNS	eP eP	22 30 44.6 22 30 48.6				
	16	USCGS 22 55 DODECANESE IS		37.2, 35.3N, 27.9E, h = 25 km., m = 5.2				
		PNS	eP	23 09 43				
	16	USCGS 23 21 DODECANESE IS		04.7, 35.3N, 27.8E, h = 45 km., m = 5.2				

APRIL 1973

MONTH	DAY	STA	PHASE	TIME	STGN	PER	AMPL	DIST
ARR		PNS LPB	eP eP	23 35 12.4 23 35 16.5				104
17		LPB PNS	eP eP	00 41 11 00 41 11.6				
17		LPB PNS	eP P	01 19 20 01 19 25.6		0.6	3	
17		PNS	P S	02 32 05.9 28.8		0.9	5	
17		USCGS 04 56 14.9, 39.5N, 143.4E, h = 33 km., m = 5.0 OFF EAST COAST OF HONSHU, JAPAN						
		PNS LPB	ePKP eL PKP eL	05 15 49.3 06 06 05 15 50 06 06.5		0.9	8	144
17		LPB	e(P)	06 13 13				
17		PNS LPB	P P	07 02 25.2 07 02 31.3		0.7 0.8	12 9	
17		PNS LPB	eP eP	07 19 54.8 07 19 55.5				
17		PNS LPB	iP iS P S	09 50 21.2 43.7 09 50 22.6 46.2	D	0.4	10	
17		LPB	eP	11 01 55				
17		PNS	P S	11 16 24.8 55.8		0.5	4	
17		PNS LPB	P P	12 42 55 12 43 00		0.6 1.0	5 30	
17		LPB PNS	eP eP eS	13 42 16 13 42 16.6 44 04.8				
17		LPB PNS	P iP S	16 05 08 16 05 09.6 49.1	C	1.0 0.6	24 20	
17		PNS LPB	P eP	16 50 15.4 16 50 17		0.4	5	
17		USCGS 17 37 22.4, 28.3S, 68.8W, h = 82 km., m = 5.0 LA RIOJA, PROV. ARGENTINA						
		LPB PNS	P P	17 40 08.9 17 40 10.7		0.8 1.0	30 24	12

APRIL 1973

MONTH	DAY	STA	PHASE	TIME	SIGN	PER	AMPL	DIST
APR	17	LPR PNS	eP eP	19 18 43.6 19 18 44		0.8	5	
17		LPR PNS	eP P	19 30 37 19 30 38		0.4	4	
17		PNS	eP	20 20 01.6		0.4	2	
17		PNS LPR	P eP	22 03 52.8 22 03 55.8		0.7	8	
17		LPB PNS	P P eS	22 39 14 40 00 22 39 15.8 40 03.6	C	1.0 0.5	30 7	
17		PNS	eP	23 20 32.4				
18		PNS LPB	P eP	00 44 34.4 00 44 34.5				
18		LPB	e(P)	00 51 34				
18		LPB	eP	01 37 19.5				
18		LPB	eP	01 52 52				
18		PNS	eP	02 33 25.5				
18		LPB PNS	P eP eS	03 07 02 33 03 07 08.6 43.6		1.0	35	
18		LPB PNS	eP eS P S	04 27 09 35 04 27 04.8 29.6		0.5	5	
18		PNS LPB	eP P e	05 27 06 05 27 10.6 28 09				
18		PNS LPB	eP eP	07 13 52.4 07 13 52.4		0.4	3	
18		PNS LPB	eP P	07 19 41.5 07 19 42		0.5	5	
18		LPB	eP	08 16 25.5				
18		LPB PNS	eP P	08 47 11 08 47 11.8				
18		LPB	eP	10 02 07				
18		PNS LPB	eP eP	12 17 24 12 17 30.5				

APRIL

MONTH	DAY	STA	PHASE	TIME	SIGN	PER	AMPL	DIST
APR	18	USCGS 12 32 03.4, 4.5S, 132.7E, m = 5.5 WEST NEW GUINEA EWG						
		PNS	PKP	12 51 50.8				
		LPB	PKP	12 51 52.5				150
	18	LPB	eP	13 20 41				
		PNS	eP	13 20 43.5				
	18	LPB	eP	16 23 29		0.6	14	
			S	24 02				
		PNS	eP	16 23 38.8				
	18	LPB	eP	16 36 01.7				
		PNS	eP	16 36 07.1				
	18	USCGS 17 43 53.7, 24.3N, 109.7W, m = 5.0 GULF OF CALIFORNIA						
		PNS	P	17 53 39.2				
		LPB	P	17 53 41.7		1.0	24	57
	18	LPB	eP	17 59 23.4		0.7	12	
		PNS	eP	17 59 25.6				
	18	PNS	eP	18 33 27				
		LPB	eP	18 33 30				
	18	USCGS 19 05 18.2, 6.9N, 72.9W, h = 170 km., m = 4.6 NORTHERN COLOMBIA						
		PNS	eP	19 10 13.8				
			i	47.4				
		LPB	eP	19 10 16.5				23
	18	LPB	eP	19 59 51.7				
	18	PNS	P	20 14 49.2				
		LPB	eP	20 14 51.7				
	18	PNS	P	21 31 36.8				
	18	LPB	eP	22 59 07.8				
	19	PNS	P	01 28 03.7				
			S	26				
		LPB	P	01 28 06		0.7	38	
			eS	30				
	19	PNS	eP	01 42 56.8				
		LPB	P	01 42 58.6		0.7	8	
	19	PNS	P	01 45 47.3				
			S	46 10				
		LPB	eP	01 45 51				

APRIL

MONTH	DAY	STA	PHASE	TIME	SIGN	PER	AMPL	DIST
APR	19	LPB	eP	01 53 48				
		PNS	eP	01 53 50				
	19	LPB	P	02 36 48.6				
		PNS	P	02 36 49.3				
			i	37 41.9				
	19	USCGS 04 26 51.4, 28.5S, 71.1W, h = 30 km., m = 4.5 NEAR COAST OF CENTRAL CHILE						
		PNS	eP	04 29 54.2				
		LPB	P	04 29 54.4		0.6	7	13
	19	LPB	P	05 05 28		1.0	16	
		PNS	P	05 05 31.9				
	19	USCGS 06 13 21.1, 27.9S, 70.8W, h = 33 km., m = 4.3 NEAR COAST OF NORTHERN CHILE						
		LPB	eP	06 16 08				12
		PNS	eP	06 16 10				
	19	PNS	eP	08 01 41				
	19	USCGS 08 16 06.5, 25.2N, 46.7W, m = 5.0 NORTH ATLANTIC RIDGE						
		PNS	P	08 24 32.6	D	0.8	23	
		LPB	P	08 24 33		0.9	17	46
	19	USCGS 08 45 16.0, 6.2S, 103.9E, h = 40 km., m = 5.7 SOUTHWEST OF SUMATRA						
		LPB	ePKP	09 05 10				156
		PNS	ePKP	09 05 10.6				
	19	USCGS 09 21 46.4, 5.3S, 77.2W, h = 26 km., m = 5.0 NORTHERN PERU						
		PNS	eP	09 25 03				
		LPB	eP	09 25 09				13
			e	29 00				
			eL	10 30.4				
	19	PNS	eP	13 26 01.8				
			S	25				
	19	USCGS 14 45 53.4, 7.0N, 73.1W, h = 140 km., m = 4.1 NORTHERN COLOMBIA						
		PNS	P	14 50 50		0.5	2	
			HP	51 23.8				
		LPB	eP	14 50 50				23
			ePP	51 20.5				
	19	PNS	P	15 06 41.6		0.5	2	
		LPB	eP	15 06 48				

APRIL

MONTH	DAY	STA	PHASE	TIME	SIGN	PER	AMPL	DIST
APR	19	USCGS 15 18 09.6, 40.7N, 142.1E, h = 65 km., m = 4.7 NEAR EAST COAST OF HONSHU, JAPAN						
		PNS	ePKP	15 37 43.8				
		LPB	ePKP	15 37 39.5				144
	19	PNS	P	16 48 22.4		0.5	5	
		LPB	eP	16 48 24				
	19	USCGS 19 18 31.2, 35.0S, 111.5W, m = 4.8 EASTER IS CORDILLERA						
		LPB	eP	19 26 28.7				42
	19	PNS	eP	23 10 53.6				
	19	PNS	eP	23 44 31				
	20	PNS	P	00 24 51.7		0.8	8	
		LPB	eP	00 24 55.5				
	20	USCGS 01 04 41.2, 23.6S, 69.8W, h = 76 km., m = 4.2 NORTHERN CHILE						
		LPB	eP	01 06 27.2				7
			PP	33.5				
		PNS	eP	01 06 28				
			PP	35.1				
	20	PNS	eP	02 15 40				
	20	PNS	eP	03 32 36.5				
	20	USCGS 04 30 48.9, 14.3S, 72.1W, h = 105 km., m = 4.4 PERU						
		PNS	iP	04 31 50	D			
		LPB	P	04 31 55.5	D	0.8	56	4
			eS	32 47				
	20	USCGS 04 51 34.5, 1.6S, 136.9E, h = 42 km., m = 5.5 WEST NEW GUINEA REG						
		PNS	ePKP	05 11 22.2				
		LPB	ePKP	05 11 23				149
	20	LPB	eP	06 22 02.0				
		PNS	eP	06 22 03.6				
	20	LPB	P	06 31 11.2		0.6	7	
	20	PNS	eP	07 13 00.8				
		LPB	eP	07 13 03.5				
			eS	58.3				
								34

APRIL

MONTH	DAY	STA	PHASE	TIME	SIGN	PER	AMPL	DIST
APR	20	LPB	eP	07 24 38.5				
		PNS	eP	07 24 40		0.7	5	
	20	PNS	iP	10 17 20.8	C			
			S	46				
		LPB	iP	10 17 21.5	C	0.9	600	
			iS	46.2				
	20	PNS	eP	11 18 03				
		LPB	eP	11 18 00.5				
	20	PNS	P	12 03 26.6				
	20	PNS	P	12 08 40				
			S	09 02.9				
	20	LPB	P	13 14 54		1.0	40	
		PNS	P	13 14 55.6		0.6	16	
	20	PNS	P	16 08 57.8				
	20	LPB	P	17 54 02				
			S	38				
		PNS	eP	17 54 11.6				
	20	PNS	P	18 00 29.6		0.6	5	
	21	USCGS 02 19 07.1, 14.1N, 91.0W, m = 82 km., m = 5.5 GUATEMALA						
		PNS	P	02 26 15.8		1.2	70	
			eL	38				
		LPB	eP	02 26 19				38
			eL	38.5				
	21	LPB	eP	03 34 19				
		PNS	eP	03 34 21.8				
	21	PNS	P	05 21 50.7		0.8	8	
	21	USCGS 07 19 27.5, 32.2N, 131.9E, h = 41 km., m = 6.1 KYUSHU, JAPAN						
		PNS	PKP	07 39 20.5		1.6	150	
			eL	08 35				
		LPB	EPKP	07 39 24				156
			eL	08 35.2				
	21	USCGS 08 57 20.1, 18.2S, 69.4W, h = 136 km., m = 4.0 NORTHERN CHILE						
		PNS	iP	08 57 58.2	D			
		LPB	iP	08 57 58.2	D			
	21	PNS	eP	10 06 55.4				
		LPB	eP	10 06 59				

APRIL 1994

MONTH	DAY	STA	PHASE	TIME	SIGN	PER	AMPL	DIST	
APR	21	PNS	P	11 02 32.5		0.4	3		
			S	56.4					
	21	USCGS 12 48 04.7, 28.9S, 67.4W, h = 135 km., m = 4.7 LA RIOJA, PROV. ARGENTINA							
		PNS	eP	12 51 01.6					
		LPB	eP	12 51 07				12	
	21	LPB	eP	13 25 21					
		PNS	iP	13 25 22.3	D				
	21	PNS	eP	14 00 14					
		LPB	eP	14 00 15					
	21	USCGS 14 11 42.9, 4.8S, 153.2E, h = 57 km., m = 5.1 NEW IRELAND REG.							
		LPB	ePKP	14 31 53.5				134	
		PNS	ePKP	14 31 57.4					
	21	PNS	eP	15 22 37.2					
	21	PNS	eP	15 30 13.3					
	21	PNS	eP	17 14 12.5					
	21	PNS	P	17 15 36.3		0.8	8		
	21	USCGS 17 58 56.9, 14.4S, 66.5E, m = 4.8 MID-INDIAN RISE							
		PNS	ePKP	18 17 59					
	21	PNS	iP	18 23 01.2	D				
			S	26.8					
	21	LPB	eP	20 12 56					
		PNS	eP	20 12 56.7					
			S	13 19					
	22	USCGS 00 29 25.0, 14.1N, 91.0W, h = 89 km., m = 4.8 GUATEMALA							
		PNS	P	00 36 31.8		1.0	16		
		LPB	eP	00 36 37				38	
	22	LPB	eP	02 11 50					
			S	13 02					
	22	USCGS 04 38 03, 26.7S, 114.2W, m = 5.3 EASTER IS REG							
		PNS	P	04 46 07.6					
			i	10					
			eS	52 40					
			L	59					

APRIL 1994

MONTH	DAY	STA	PHASE	TIME	SIGN	PER	AMPL	DIST	
APR	22	PNS	eP	05 03 25.6					
			eS	04 51					
	22	LPB	P	05 46 58.2					
	22	USCGS 05 51 36.9, 24.3N, 122.5E, m = 30 km., m = 5.1 TAIWAN REG.							
		PNS	ePKP	06 11 41.6					
		LPB	ePKP	06 11 46				167	
	22	USCGS 06 31 57.5, 26.8S, 11.4W, m = 5.6 EASTER IS REG							
		PNS	P	06 40 02.8		1.0	65		
			S	46 30					
			L	50.9					
		LPB	eP	06 40 04.2				43	
			iS	46 32					
	22	PNS	eP	06 51 40					
		LPB	eP	06 51 45					
	22	USCGS 07 37 51.2, 15.4S, 174.1W, m = 164 km., m = 5.0 TONGA IS							
		LPB	eP	07 51 30				100	
	22	PNS	eP	07 53 55.6		1.4	19		
		LPB	eP	07 54 00					
	22	USCGS 08 11 21.6, 39.8N, 143.0E, m = 36 km., m = 5.5 OFF EAST COAST OF HONSHU, JAPAN							
		PNS	eP	08 30 55.6					
			eL	09 20.6					
		LPB	eP	08 31 01				144	
			eL	09 20					
	22	LPB	eP	09 38 15					
		PNS	P	09 38 18.7		0.7	4		
	22	PNS	eP	14 08 46.4					
			eS	09 22.1					
	22	PNS	P	15 06 31.6		0.8	11		
	22	PNS	eP	19 55 03.5					
		LPB	eP	19 55 04.5					
	22	USCGS 22 34 38.4, 13.0N, 58.2E, h = 33 km., m = 5.7 ARABIAN SEA							
		LPB	PKP	22 53 45		1.2	34	128	
			eL	23 35.4					
		PNS	PKP	22 53 45.2		1.0	70		

APRIL

MONTH	DAY	STA	PHASE	TIME	SIGN	PER	AMPL	DIST	
APR	23	LPB	P	01 06 57.7					
			e(S)	08 44.5					
		PNS	eP	01 06 59.2					
	23	LPB	eP	02 17 50					
		PNS	eP	02 17 50.8					
			S	18 25					
	23	LPB	eP	02 53 47.7		1.0	14		
		PNS	P	02 53 29.6		0.4	10		
	23	LPB	P	03 15 33.7		0.5	7		
	23	LPB	eP	06 14 16					
			S	15 16					
	23	LPB	eP	07 07 56					
		PNS	eP	07 07 56.2		0.7	3		
	23	PNS	eP	07 20 49.5		0.7	5		
		LPB	eP	07 20 52.5					
	23	USCGS 08 27 05.1, 35.1S, 71.1W, h = 85 km., m = 4.5 CENTRAL CHILE							
		LPB	eP	08 31 21.5				10	
		PNS	eP	08 31 22.8					
	23	LPB	eP	08 36 39					
		PNS	eP	08 36 40					
	23	LPB	eP	10 11 14					
		PNS	P	10 11 18					
	23	PNS	eP	11 27 26.5					
	23	LPB	eP	15 21 46					
			S	22 23.2					
		PNS	eP	15 21 48		0.6	5		
			S	22 27					
	23	PNS	eP	15 25 17.5					
		LPB	eP	15 25 22					
	23	PNS	eP	18 07 12.6					
	23	PNS	eP	18 08 54					
	23	LPB	eP	19 57 46					
		PNS	eP	19 57 47.8		0.5	2		
	23	PNS	P	20 28 32.5					
			S	57.8					

APRIL

MONTH	DAY	STA	PHASE	TIME	SIGN	PER	AMPL	DIST	
APR	23	PNS	eP	21 44 54.6					
			S	45 27.5					
	24	LPB	P	00 18 33.2					
		PNS	P	00 18 35.2		0.8	7		
	24	USCGS 00 17 45.5, 2.8S, 129.3E, h = 27 km., m = 5.0 CERAM							
		LPB	eP	00 37 42				153	
		PNS	ePKP	00 37 48.4					
	24	PNS	eP	01 04 52.8		0.4	3		
	24	PNS	eP	01 26 44.4		0.4	3		
	24	LPB	eP	03 25 26					
			i	51.2					
		PNS	eP	03 25 29					
			i	53					
	24	LPB	eP	05 01 17					
		PNS	eP	05 01 23.6					
	24	USCGS 05 37 46.4, 56.1S, 29.0W, m = 5.4 SOUTH SANDWICH IS REG							
		LPB	eP	05 46 34.5				49	
		PNS	eP	05 46 38					
	24	PNS	P	06 24 03.7					
		LPB	P	06 24 09.3		0.9	6		
	24	PNS	iP	07 46 03					
		LPB	P	07 46 05		0.8	17		
			e(S)	29					
	24	PNS	eP	09 37 28.8		0.8	4		
		LPB	eP	09 37 33.6					
	24	PNS	P	16 35 10.9		0.6	6		
		LPB	eP	16 35 10.6					
	24	LPB	eP	16 50 29.2					
		PNS	eP	16 50 31.5		0.4	8		
			eS	51 59					
	24	PNS	eP	19 15 58.2					
	24	LPB	eP	22 36 16					
		PNS	eP	22 36 21.4					

APRIL

MONTH	DAY	STA	PHASE	TIME	SIGN	PER	AMPL	DIST	
APR	24	PNS LPB	eP eP	22 51 14 22 51 22.5					
	24	LPB PNS S	eP P S	22 53 23.2 22 53 26.8 54 54					
	25	LPB	eP	00 45 33					
	25	PNS	P	03 23 44					
	25	USCGS 03 34	17.7, 7.5N, 82.1W, h = 25 km., m = 5.4 SOUTH OF PANAMA						
		PNS	P S L	03 40 00.6 44 50 47.9					
		LPB	P S eL	03 40 04.5 44 48 51.5		2.0	162	28	
	25	PNS LPB	eP eP	04 06 01.4 04 06 10					
	25	USCGS 04 52	58.4, 5.0N, 97.9E, m = 4.9 NORTHERN SUMATRA						
		PNS	ePKP ePKP2	05 13 00.2 50.2					
		LPB	ePKP ePKP2	05 13 01.2 48.2				162	
	25	USCGS 07 12	09.9, 21.3S, 68.4W, h = 122 km., m = 4.5 CHILE-BOLIVIA BOR REG						
		LPB	P S	07 13 24.8 14 20	C	0.7	42	4	
		PNS	P S eL	07 13 28 14 26 14.9	C				
	25	USCGS 07 36	36.2, 30.8N, 70.3E, h = 23 km., m = 4.9 WEST PAKISTAN						
		LPB	ePKP	07 56 11				139	
	25	PNS LPB	eP P	09 23 20.5 09 23 23.6					
	25	PNS LPB	P eP	10 33 45.8 10 33 49.2		0.8	9		

APRIL

MONTH	DAY	STA	PHASE	TIME	SIGN	PER	AMPL	DIST	
APR	25	USCGS 13 16	56.9, 24.9S, 179.8E, h = 459 km., m = 4.7 SOUTH OF FIJI IS						
		LPB	eP	13 30 50				102	
	25	USCGS 13 26	30.9, 7.3N, 123.7E, h = 660 km., m = 4.8 MINDANAO, PHILIPPINE IS						
		PNS	ePKP	13 45 26.4					
	25	LPB PNS	eP eP	15 35 08 15 35 09.6					
	25	PNS LPB	P eP	16 33 09.5 16 33 12		0.6	12		
			e	54.5					
	25	PNS LPB	P eP	16 53 26 16 53 28.5					
	25	PNS LPB	eP eP	20 42 31.8 20 42 33					
	25	PNS LPB	eP eP	21 08 35.2 21 08 37					
	25	USCGS 21 20	22.7, 1.3N, 120.4E, h = 27 km., m = 5.2 NORTHERN CELEBES						
		LPB	PKP	21 40 26				162	
		PNS	PKP	21 40 27.8					
	25	PNS LPB	eP eP	21 48 51.6 21 48 56.6		0.9	19		
	26	PNS LPB	eP eP	01 24 58.6 01 25 01					
	26	PNS LPB	eP eP	02 38 24.4 02 38 25					
	26	PNS LPB	eP P	05 37 35.6 05 37 36.5					
	26	PNS LPB	eP eP	05 48 42 05 48 46					
	26	USCGS 05 58	49.0, 30.6S, 71.4W, h = 23 km., m = 5.6 NEAR COAST OF CENTRAL CHILE						
		LPB	P eS eL	06 02 16 05 00 06.6		1.1	37		
		PNS	P eS L	06 02 18.8 05 10 06.3	C	1.4	70 70		

APRIL								
MONTH	DAY	STA	PHASE	TIME	SIGN	PER	AMPL	DIST
APR	26	PNS	P	07 02 04.9				
		LPB	eP	07 02 10.5				
26	26	LPB	eP	08 56 51				
		PNS	eP	08 56 51.8				
26	26	PNS	P	10 14 54.8		0.8	16	
		LPB	eP	10 14 59.5				
26	26	LPB	eP	11 04 25				
26	26	PNS	ePKP	11 43 09.4				
		LPB	ePKP	11 43 15				175
26	26	LPB	eP	13 11 36				
		PNS	P	13 11 39.1				
26	26	LPB	eP	14 12 46.5				
26	26	LPB	eP	14 43 46				
		PNS	P	14 43 48.6		0.8	5	
26	26	PNS	P	16 36 39.2		0.6	11	
		LPB	eP	16 36 41				
26	26	PNS	eP	16 52 11.9		0.4	2	
26	26	PNS	eP	19 43 03				
			S	29.4				
		USCGS 20 17 10.2, 3.0S, 102.3E, h = 127 km., m = 5.1						
26	26	PNS	ePKP	20 36 57				
			e	37 34				
		LPB	ePKP	20 36 59				157
26	26	PNS	eP	21 07 20				
			S	43				
26	26	LPB	eP	21 57 36				
		PNS	iP	21 57 38.7	D			
			S	58 02.6				
26	26	USCGS 21 52 31.6, 6.0S, 146.1E, h = 122 km., m = 4.8						
		EAST NEW GUINEA REG						
26	26	PNS	ePKP	22 11 44.4				
26	26	LPB	eP	22 34 43				
		PNS	P	22 34 46.6	D	0.4	18	
			S	35 16.4				

APRIL								
MONTH	DAY	STA	PHASE	TIME	SIGN	PER	AMPL	DIST
APR	27	USCGS 00 34 55.0, 24.1S, 66.7W, h = 191 km., m = 4.3						
		SALTA PROVINCE ARGENTINA						
		LPB	P	00 36 45.6		0.6	112	8
			S	38 10				
27	27	PNS	iP	00 36 49.7	D			
			eS	38 14				
		USCGS 01 37 14.5, 0.9N, 120.1E, h = 12 km., m = 5.4						
		NORTHERN CELEBES						
27	27	LPB	PKP	01 57 20		1.0	30	162
			eL	02 56.8				
27	27	PNS	PKP	01 57 20.3		1.2	42	
		LPB	eP	03 05 54.8				
27	27	PNS	P	03 05 56.3	D			
		LPB	eP	04 12 28.5				
27	27	PNS	eP	05 05 06.8				
		LPB	eP	05 05 09.5				
27	27	LPB	P	05 22 54.7		0.9	19	
		PNS	P	05 22 57.9		0.6	4	
27	27	LPB	P	06 21 30.5				
			S	58				
27	27	PNS	P	06 21 37.2	C	0.4	14	
		PNS	P	06 36 40		0.6	6	
27	27	PNS	eP	08 36 06.8				
		LPB	eP	08 36 09.5				
			e	51.6				
27	27	PNS	P	09 37 27				
		LPB	P	09 37 31.4		1.0	24	
27	27	LPB	P	09 45 18.5				
		PNS	eP	09 45 19				
27	27	LPB	eP	12 07 41.4				
		PNS	eP	12 07 35.8				
27	27	PNS	P	12 34 18.8				
			S	46				
		LPB	P	12 34 19.5		0.9	85	
			S	48.7				
27	27	USCGS 12 59 07.3, 57.7S, 25.4W, h = 42 km., m = 5.7						
		SOUTH SANDWICH IS REG						
		LPB	eP	13 08 13				52
			eL	21.3				
27	27	PNS	P	13 08 18.8				
			eL	25				

APRIL

MONTH	DAY	STA	PHASE	TIME	SIGN	PER	AMPL	DIST	
ARR	27	PNS LPB	eP eP	13 34 32.8 13 34 35					
	27	RNS LPB	eP eP	14 09 27.6 14 09 33.4					
	27	PNS LPB	eP eP	14 22 55.8 14 22 59.5					
	27	LPB PNS	eP P	16 40 16 16 40 18					
	27	LPB PNS	eP i eP	18 43 43 44 13 18 43 43.3					
	27	USCGS 20 13 51.9, 30.8S, 71.7W, m = 4.5 NEAR COAST OF CENTRAL CHILE							
		LPB PNS	eP eP	20 17 19.5 20 17 21				14	
	28	USCGS 00 46 25.6, 13.3N, 145.1E, h = 51 km., m = 5.3 MARIANA IS							
		PNS LPB	PKP PKP	01 06 05.8 01 06 06.9		1.2 1.4	50 67	148	
	28	LPB PNS	P eP	03 17 03 03 17 04.2		1.0	16		
	28	LPB	eP	04 15 42.2					
	28	PNS	P S	04 29 07 29					
	28	LPB PNS	eP P S	04 33 50 04 33 54.8 34 07.6					
	28	LPB PNS	P P i	04 59 29.5 04 59 30 50.2					
	28	PNS LPB	eP P	05 14 31 05 14 33.0					
	28	LPB	eP	06 49 20.2					
	28	PNS LPB	P eP	07 14 09.6 07 14 12	D				

APRIL

MONTH	DAY	STA	PHASE	TIME	SIGN	PER	AMPL	DIST	
APR	27	USCGS 00 34 55.0, 24.1S, 66.7W, h = 191 km., m = 4.3 SALTA PROVINCE ARGENTINA							
		LPB	P S	00 36 45.6 38 10		0.6	112	8	
		PNS	iP eS	00 36 49.7 38 14	D				
	27	USCGS 01 37 14.5, 0.9N, 120.1E, h = 12 km., m = 5.4 NORTHERN CELEBES							
		LPB PNS	PKP eL PKP	01 57 20 02 56.8 01 57 20.3		1.0 1.2	30 42	162	
	27	LPB PNS	eP P	03 05 54.8 03 05 56.3	D				
	27	LPB	eP	04 12 28.5					
	27	PNS LPB	eP eP	05 05 06.8 05 05 09.5					
	27	LPB PNS	P P	05 22 54.7 05 22 57.9		0.9 0.6	19 4		
	27	LPB	P S	06 21 30.5 58					
		PNS	P	06 21 37.2	C	0.4	14		
	27	PNS	P	06 36 40		0.6	6		
	27	PNS LPB	eP eP e	08 36 06.8 08 36 09.5 51.6					
	27	PNS LPB	P P	09 37 27 09 37 31.4		1.0	24		
	27	LPB PNS	P eP	09 45 18.5 09 45 19					
	27	LPB PNS	eP eP	12 07 41.1 12 07 35.8					
	27	PNS LPB	P S P S	12 34 18.8 46 12 34 19.5 48.7		0.9	85		
	27	USCGS 12 59 07.3, 57.7S, 25.4W, h = 42 km., m = 5.7 SOUTH SANDWICH IS REG							
		LPB PNS	eP eL P eL	13 08 13 21.3 13 08 18.8 25				52	

APRIL									
MONTH	DAY	STA	PHASE	TIME	SIGN	PER	AMPL	DIST	
APR	27	PNS LPB	eP	13 34 32.8					
			eP	13 34 35					
	27	PNS LPB	eP	14 09 27.6					
			eP	14 09 33.4					
	27	PNS LPB	eP	14 22 55.8					
			eP	14 22 59.5					
	27	LPB PNS	eP	16 40 16					
			P	16 40 18					
	27	LPB	eP	18 43 43					
			i	44 13					
			eP	18 43 43.3					
	27	USCGS 20 13 51.9, 30.8S, 71.7W, m = 4.5 NEAR COAST OF CENTRAL CHILE							
			LPB	eP	20 17 19.5				14
			PNS	eP	20 17 21				
	28	USCGS 00 46 25.6, 13.3N, 145.1E, h = 51 km., m = 5.3 MARIANA IS							
			PNS	PKP	01 06 05.8	1.2	50		
			LPB	PKP	01 06 06.9	1.4	67	148	
	28	LPB PNS	P	03 17 03		1.0	16		
			eP	03 17 04.2					
	28	LPB	eP	04 15 42.2					
	28	PNS	P	04 29 07					
			S	29					
	28	LPB PNS	eP	04 33 50					
			P	04 33 54.8					
			S	34 07.6					
	28	LPB PNS	P	04 59 29.5					
			P	04 59 30					
	28	PNS	i	50.2					
	28	PNS LPB	eP	05 14 31					
			P	05 14 33.0					
	28	LPB	eP	06 49 20.2					
	28	PNS LPB	P	07 14 09.6	D				
			eP	07 14 12					

APRIL									
MONTH	DAY	STA	PHASE	TIME	SIGN	PER	AMPL	DIST	
APR		PNS LPB	cPKP	21 37 27					
			eL	22 23					
		LPB	ePKP	21 37 32					134
			eL	22 22.5					
	29	LPB PNS	eP	22 22 41					
			P	22 22 44					
	30	USCGS 01 08 45.6, 9.4S, 118.5E, h = 45 km., m = 5.1 SUMBAWA ISLAND REGION							
			LPB	ePKP	01 28 30				153
		PNS	ePKP	01 28 33					
	30	PNS	eP	01 41 13					
			S	42 11					
		LPB	P	01 41 21					
			S	42 18.4					
	30	LPB	P	04 42 55.6					
	30	LPB PNS	P	04 56 42					
			eP	04 56 45.4					
	30	PNS LPB	eP	06 02 09.5					
			eP	06 02 10					
	30	LPB	eP	08 45 26					
	30	PNS LPB	eP	09 07 25					
			eP	09 07 28.5					
	30	PNS LPB	eP	10 06 31					
			eP	10 06 37					
	30	LPB PNS	eP	10 31 16					
			eP	10 31 20					
	30	LPB	P	11 01 05		0.8	25		
			eS	37					
	30	PNS	P	12 17 45.4	D				
			S	18 07					
		LPB	P	12 17 47.2		1.2	46		
	30	LPB PNS	P	15 01 04.8		0.7	28		
			iS	36					
		PNS	P	15 01 08.3	C	0.3	5		
			iS	43.2					
	30	PNS LPB	eP	15 13 22.1					
			eP	15 13 28.6					
	30	PNS	eP	15 26 41.4					

MAY

MONTH	DAY	STA	PHASE	TIME	SIGN	PER	AMPL	DIST	
MAY	01	LPB PNS	eP eP	35.14 50 35.5 14 50 39					
	01	USCGS 16 33 11.4, 30.6S, 71.5N, h = 55 km., m = 4.3 NEAR COAST OF CENTRAL CHILE							
		LPB PNS	P P	16 36 32.5 16 36 37.1		1.0	6	14	
	01	PNS LPB	eP eP	17 13 40.8 17 13 44.2					
	01	LPB PNS	P P	18 45 18 18 45 20		1.0 0.6	16 3		
	01	USCGS 19 05 24.7, 16.8S, 174.7W, h = 205 km., m = 6.0 TONGA IS							
		PNS	eP S eL	19 18 51.8 29 14.4 52.7				100	
		LPB	eP	19 18 55					
	01	LPB PNS	eP eP	21 01 59 22 02 02					
	01	PNS LPB	eP e(P)	22 20 50 22 20 58.5					
	01	LPB PNS	eP eP	22 54 51.5 55 49 22 54 52					
	01	LPB	eP	23 48 12.7					
	02	LPB	eP	57 29 00 57 29					
	02	PNS LPB	eP P	02 55 18.8 02 55 21.6					
	02	LPB PNS	P P	04 01 29.5 04 01 30.7		1.0	24		
	02	PNS LPB	eP eP	04 51 22 04 51 26					
	02	USCGS 05 05 16.8, 6.6S, 129.6E, h = 133 km., m = 5.3 BANDA SEA							
		LPB PNS	PKP i PKP i	05 24 52.3 57.6 05 24 52.4 58.6		0.8	7	151	

MAY

MONTH	DAY	STA	PHASE	TIME	SIGN	PER	AMPL	DIST	
MAY	02	PNS	iP iS	05 31 56 32 26.6	C	0.6	30		
		LPB	P	05 31 59.2	C	1.0	20		
	02	LPB	eP	06 05 59					
	02	PNS	iP eS	06 14 41.6 15 04.4	D				
		LPB	P eS	06 14 43 15 08.6		0.7	21		
	02	PNS LPB	eP eP	09 50 50 09 50 54.5					
	02	USCGS 12 38 35.5, 22.4S, 67.5W, h = 175 km., m = 4.4 CHILE-BOLIVIA BOR REG							
		LPB	P eS P	12 40 03.5 41 09 12 40 07.5	D	0.7	56	6	
		PNS	S	41 16					
	02	PNS	eP S	16 41 10 59					
		LPB	eP	16 41 17					
	02	LPB	eP	20 04 02					
	02	PNS	eP	20 17 44.8					
	02	USCGS 20 40 11.3, 40.9N, 143.0E, h = 54 km., m = 4.7 OFF EAST COAST OF HONSHU, JAPAN							
		PNS LPB	ePKP ePKP	20 59 41.4 20 59 47.5		0.9	10	144	
	02	USCGS 22 45 44.0, 40.1N, 142.3E, h = 60 km., m = 4.8 NEAR EAST COAST OF HONSHU, JAPAN							
		LPB PNS	ePKP ePKP	23 05 14 23 05 16.8				145	
	03	PNS LPB	eP eP	01 42 31 01 42 34					
	03	PNS LPB	P P	03 25 56.4 03 25 59		1.0	10		
	03	PNS LPB	eP eP	03 56 59 03 57 02.6					
	03	USCGS 04 09 30.6, 5.6S, 77.2W, h = 21 km., m = 4.3 NORTHERN PERU							
		LPB PNS	eP eS eP	04 12 42 14 21.5 04 12 44.6				12	

MAY									
MONTH	DAY	STA	PHASE	TIME	SIGN	PER	AMPL	DIST	
MAY	03	USCGS 04 13 12.5,		19.8S, 69.0W, h = 144 km., m = 4.0					
		NORTHERN CHILE							
		LPB	P	04 14 19.5			4		
			i	41.3					
		PNS	P	04 14 23.2					
	03	LPR	eP	04 52 09					
		PNS	eP	04 52 16.6					
	03	LPB	eP	05 59 10.5					
	03	PNS	eP	06 15 25.6					
		LPB	eP	06 15 30					
	03	PNS	P	06 51 39.5	D				
			S	52 01.2					
		LPB	eP	06 51 40					
			S	52 06					
	03	PNS	eP	08 21 58					
		LPB	eP	08 22 00					
	03	LPB	P	09 08 42		1.0	8		
		PNS	eP	09 08 43.2					
	03	LPB	P	10 20 31		0.9	30		
	03	PNS	P	13 10 05.7					
		LPB	eP	13 10 06					
	03	PNS	eP	16 31 57					
	03	PNS	P	19 21 11.81		0.9	7		
		LPB	eP	10 21 09					
	03	PNS	P	20 09 20.6		0.8	6		
		LPB	eP	20 09 21					
	04	PNS	eP	01 47 11		0.8	5		
		LPB	eP	01 47 12.4					
	04	LPR	P	02 42 44					
		PNS	eP	02 42 46.4					
	04	USCGS 03 28 40.2,		26.9S, 175.5W, h = 71 km., m = 4.9					
		SOUTH OF TONGA IS							
		PNS	eP	03 42 04					
		LPB	eP	03 42 08			97		
	04	PNS	P	04 49 50.8	C	0.6	11		
			eS	50 19					
		LPB	P	04 49 51					
			S	50 18.5					

MAY									
MONTH	DAY	STA	PHASE	TIME	SIGN	PER	AMPL	DIST	
MAY	04	PNS	eP	05 07 51.2					
		LPB	eP	05 07 55.5					
	04	PNS	eP	05 49 28.4					
		LPB	eP	05 49 31					
	04	LPB	eP	07 00 09.5					
		PNS	P	07 00 16.3	D				
			S	40.8					
	04	LPB	P	08 15 12			1.0	10	
	04	PNS	P	09 23 18					
			i	21.4					
			S	24 08.7					
		LPB	eP	09 23 21.5					
	04	PNS	eP	11 07 56.2					
		LPB	eP	11 08 00					
	04	PNS	eP	12 38 20					
		LPB	eP	12 38 21.5					
	04	USCGS 12 36 33.4,		17.4S, 168.9E, h = 33 km., m = 5.5					
		NEW HEBRIDES IS							
		PNS	ePKP	12 55 21					
			eL	13 30.8					
		LPB	ePKP	12 55 22					114
			eL	30					
	04	USCGS 15 12 07.6,8.6S,		121.4E, h = 94 km., m = 5.1?					
		FLORES IS REG							
		LPB	ePKP	15 31 49					153
		PNS	ePKP	15 31 50.8					
	04	LPB	P	17 38 23.8			1.1	37	
		PNS	P	17 38 24.5			1.4	34	
			i	39 04.8					
	04	PNS	eP	22 26 42.8					
			S	27 07.4					
		LPB	eP	22 26 43					
	04	LPB	eP	22 40 50					
		PNS	eP	22 40 59.2					
	05	USCGS 02 08 57.2,		57.8S, 147.6E, h = 0 km., m = 49					
		WEST OF MACOUARIE IE							
		LPB	eL	02 55.8					
		PNS	eL	02 56.9					

MAY

MONTH	DAY	STA	PMASE	TIME	SIGN	PER	AMPL	DIST	
MAY	05	USCGS 02 45 38.9, 11.9N, 41.3E, h = 35 km., m = 5.2 ETHIOPIA							
		LPB	ePKP	03 04 10				112	
		PNS	ePKP	03 04 10					
	05	LPB	eP	04 14 54.5					
		PNS	eP	04 14 59.6					
	05	LPB	eP	05 10 56					
	05	USCGS 05 34 23.5, 36.0N, 10.4W, h = 29 km., m = 5.5 NORTH ATLANTIC OCEAN							
		LPB	P	05 46 06		1.0	12	76	
			eL	06 10.4					
		PNS	P	05 46 07.8		1.0	12		
	05	LPB	eP	08 12 50					
		PNS	eP	08 12 50					
	05	USCGS 09 11 00.6, 15.0S, 72.8W, h = 102 km., m = 4.3 SOUTHERN PERU							
		PNS	P	09 12 07.2		0.8	23		
		LPB	P	09 12 12.6	C	1.0	16	4	
	05	PNS	P	13 19 15.6	D				
	05	USCGS 13 52 39.6, 30.8S, 71.8W, h = 38 km., m = 5.3 NEAR COAST OF CENTRAL CHILE							
		LPB	P	13 56 07.2		1.0	90	15	
			S	58 54					
			eL	14 01					
		PNS	P	13 56 08.4					
			eS	58 58					
			eL	14 01.3					
	05	LPB	eP	14 23 01.5					
		PNS	eP	14 23 02.4					
	05	LPB	eP	14 56 41.3					
		PNS	eP	14 56 44.6					
			eS	57 20					
	05	LPB	eP	16 32 20.5					
		PNS	eP	16 32 20.6					
			i	22.5					
	05	PNS	P	16 33 00.8					
		LPB	eP	16 33 07.7					
	05	PNS	eP	17 20 30					

MAY

MONTH	DAY	STA	PHASE	TIME	SIGN	PER	AMPL	DIST	
MAY	05	PNS	eP	17 22 25.3					
	05	LPB	eP	17 56 40.5					
		PNS	P	17 56 43.4					
			S	57 07.4					
	05	PNS	eP	18 22 50					
	05	PNS	P	19 19 47.6	D				
	05	LPB	eP	19 53 08.5					
		PNS	eP	19 53 08.7					
			eS	50					
	05	PNS	eP	20 46 46					
		LPB	eP	20 46 50					
	05	USCGS 21 47 31.7, 66.8N, 18.3W, m = 5.2 ICELAND REG.							
		PNS	eP	22 00 39					
		LPB	eP	22 00 42				91	
	05	LPB	eP	22 08 41.8		1.0	8		
		PNS	P	22 08 44.1					
	05	USCGS 22 47 34.4, 38.0S, 73.2W, h = 31 km., m = 3.8 NEAR COAST OF CENTRAL CHILE							
		LPB	eP	22 52 26.5				22	
		PNS	eP	22 52 31.6					
	06	PNS	eP	09 16 21					
		LPB	eP	09 16 25					
	06	LPB	eP	13 03 50.5					
		PNS	eP	13 03 53.2					
	06	PNS	eP	13 42 20.8					
		LPB	eP	13 42 22.5					
	06	PNS	eP	16 38 39.5		0.6	5		
			eS	39 15.6					
	06	PNS	eP	18 29 31.5					
	06	LPB	eP	15 15 32					
		PNS	eP	19 15 33.6					
	06	PNS	P	22 34 01.8		0.5	9		
		LPB	eP	22 34 04					
	06	PNS	P	23 04 45.7	D	0.3	7		
			S	05 07.8					
	06	PNS	P	23 09 55.2					

MAY									
MONTH	DAY	STA	PHASE	TIME	SIGN	PER	AMPL	DIST	
MAY	06	LPB PNS	eP eP	23 25 10 23 25 15.6					
	06	LPB PNS	eP eP	23 40 11.3 23 40 15.2					
	07	PNS	eP	00 02 30.8					
	07	PNS	P	00 55 15.4					
			i	20					
			S	56 37					
		LPB	P	00 55 27		1.0	12		
			eS	56 46					
	07	PNS LPB	eP eP	01 28 32.8 01 28 35					
	07	PNS LPB	eP eP	01 44 24.3 01 44 23.5					
	07	LPB PNS	eP P	01 56 06 01 56 10.4		0.4	5		
	07	PNS	eP	02 09 27					
	07	LPB PNS	eP eP	02 39 54 02 39 54.4					
	07	LPB	P	04 02 53.5		0.8	6		
	07	PNS	P	06 45 46.2					
			S	46 16.3					
		LPB	P	06 45 50		1.0	23		
	07	LPB	eP	07 45 37	0.50	0.5	14		
	07	PNS LPB	eP eP	09 00 10 09 00 16					
	07	USCGS 08 52 50.8, 12.1N, 124.6E, h = 134 km., m = 5.2 SAMAR, PHILIPPINE IS							
		PNS	PKP	09 12 43.8					
			PPKP	13 16					
			PKP2	14 20					
		LPB	P	09 12 44.5		1.1	20	166	
			PPKP	13 17					
			PKP2	14 21.5					
	07	USCGS 09 21 18.2, 31.2S, 179.2W, h = 158 km., m = 4.9 KERMADEC IS							
		PNS	ePKP	09 34 31					

MAY									
MONTH	DAY	STA	PHASE	TIME	SIGN	PER	AMPL	DIST	
MAY	07	LPB	eP	11 05 29.5					
	07	PNS	e(P)	11 12 44.8					
			eS	13 38.6					
		LPB	eP	11 12 47.5					
			eS	13 37.5					
	07	PNS	eP	12 50 36.3					
	07	PNS	eP	13 19 04.4		0.4	2		
			S	29.2					
	07	USCGS 13 45 00.0, 37.3N, 116.5W, h = 0 km., m = 5.8 SOUTHERN NEVADA							
		PNS	P	13 56 14	C	1.0	20		
			eL	14 20.9					
		LPB	P	13 56 16.5		1.1	90	70	
			eL	14 21					
	07	USCGS 13 48 24.4, 6.9S, 122.5E, m = 4.9 FLORES SEA							
		PNS	ePKP	14 08 22					
		LPB	ePKP	14 08 17				154	
	07	LPB	eP	15 17 09					
			S	53					
		PNS	eP	15 17 13.4					
			eS	18 04.8					
	07	PNS	P	16 34 11.2		0.6	11		
			eS	46.6					
		LPB	eP	16 34 16					
			eS	55					
	07	LPB	P	18 00 47		0.8	21		
		PNS	P	18 00 50.6	C	0.8	19		
	07	PNS	eP	19 05 23.4					
	07	LPB PNS	eP P	19 30 54.5 19 31 00.9		0.6	4		
			S	51					
	07	LPB	eP	22 31 48					
		PNS	eP	22 31 49.6					
			S	32 25.8					
	07	USCGS 22 17 35.4, 52.S, 152.7E, h = 54 km., m = 5.1 NEW BRITAIN REG.							
		LPB	ePKP	22 36 48					
		PNS	ePKP	22 36 52.5				134	

MAY									
MONTH	DAY	STA	PHASE	TIME	SIGN	PER	AMPL	DIST	
MAY	07	PNS LPB	eP eP	23 54 02.6 23 54 07					
	08	LPB PNS	p i(S) D	01 44 10.4 49 01 44 12		1.0 0.6	40 4		
	08	USCGS 01 50 02.7, 13.3N, 144.9E, h = 51 km., m = 5.1 MARIANA IS							
		PNS LPB	PKP eL PKP i eL	02 09 43.4 02 58.9 02 09 43.5 10 00 58.6		1.0	50	148	
	08	PNS LPB	iP S iP S	02 42 48.1 43 11.4 02 42 49.5 43 13	D D	0.9	195		
	08	PNS LPB	eP P	06 31 26.5 06 31 33.2		0.8	7		
	08	LPB	eP	07 03 46					
	08	PNS LPB	eP eP	07 57 24.6 07 57 31.5					
	08	LPB PNS	eP eP	09 22 03.5 09 22 03.6					
	08	PNS LPB	P iS e(P)	10 19 28.1 58.6 10 19 31.5		0.5	2		
	08	PNS LPB	P S	12 54 12.8 36					
	08	LPB PNS	eP eP	13 10 04 13 10 04.5					
	08	PNS LPB	eP eP	13 55 18 13 55 19					
	08	PNS	P S	14 22 18.8 41.2					
	08	PNS LPB	P eS eP eS	15 20 08.2 21 05.2 15 20 10 20 58					
	08	LPB PNS	eP P	18 48 21.5 18 48 25.6					
			eS	49 23					

MAY									
MONTH	DAY	STA	PHASE	TIME	SIGN	PER	AMPL	DIST	
MAY	08	PNS	P S	20 48 38.2 49 07.2					
	08	PNS LPB	P S eP eS	22 51 30 59.8 22 51 31.5 52 00					
	08	USCGS 22 37 16.8, 5.6S, 146.2E, h = 76 km., m = 5.1 EAST NEW GUINEA REG							
		LPB PNS	ePKP ePKP	22 56 27.6 22 56 32.8				139	
	09	PNS LPB	P S P eS	02 42 10.1 51 02 42 15.6 43 00.5	C		1.0	10	
	09	PNS LPB	eP P	03 05 16.2 03 05 34 03 05 37.6					
	09	PNS LPB	P P	05 29 45.9 05 29 47			1.0	16	
	09	USCGS 08 25 02.5, 30.7S, 70.8W, h = 82 km., m = 4.0 CHILE-ARGENTINA BOR REG							
		PNS LPB	eP eP	08 26 25.6 08 26 26				15	
	09	LPB	eP	08 51 52			1.2	33	
	09	LPB	eP	09 45 19.5					
	09	PNS	P	11 53 04					
	09	USCGS 13 29 52.6, 8.9S, 124.0E, h = 37 km., m = 5.2 TIMOR							
		PNS LPB	ePKP ePKP	13 49 42 13 49 44				150	
	09	LPB PNS	eP eP	14 44 11 14 44 14.1					
	09	PNS LPB	eP i eP i	16 42 04.8 15.2 16 42 09 20		0.6	4		
	09	PNS LPB	P P	18 32 06.6 18 32 14			0.6 1.0	2 14	

MAY									
MONTH	DAY	STA	PHASE	TIME	SIGN	PER	AMPL	DIST	
MAY	09	PNS	P S	19 39 35.3 59.5		0.5	2		
	09	LPB	eP	20 13 32					
	09	PNS	eP	20 21 04.8					
	09	PNS	P S	23 17 37.5 18 07		0.4	2		
	10	LPB	eP	00 19 14					
	10	LPB	eP	00 25 40.4					
	10	USCGS 01 33 27.6, 19.4N, 155.1W, h = 11 km., m = 4.9 HAWAII							
		PNS	eP	01 46 34					
		LPB	eP	01 46 36				93	
	10	PNS	P iS	02 15 27.4 16 01.6	C	0.6	7		
		LPB	eP	02 15 28.5					
	10	PNS	P	04 43 38.5					
		LPB	eP	04 43 39.3					
	10	LPB	eP	06 58 01					
	10	PNS	iP eS	10 39 35 40 00	D	0.6	12		
		LPB	P	10 39 35					
	10	LPB	eP	13 57 28		0.4	30		
		PNS	P	13 57 28.7					
	10	LPB	eP	15 40 43					
	10	PNS	P	16 40 08.6		0.5	5		
		LPB	eP	16 40 13					
	10	PNS	eP	17 38 00					
		LPB	eP	17 38 03					
	10	PNS	P S	18 17 07.4 31					
	10	PNS	eP S	20 38 30.7 54.8					
	10	LPB	eP	23 53 51.5					
		PNS	P S	23 53 52.8 54 15.7					
	11	LPB	eP	00 28 19					
	11	USCGS 00 18 41.9, 14.3N, 56.7E, h = 32 km., m = 5.1 ARABIAN SEA							
		LPB	ePKP	00 37 46				127 60	

MAY									
MONTH	DAY	STA	PHASE	TIME	SIGN	PER	AMPL	DIST	
MAY	11	LPB	eP	02 31 17.5					
		PNS	eP	02 31 18					
	11	PNS	eP S	02 47 26.8 48 00.4					
	11	PNS	eP eS	04 28 16.2 51.8					
		LPB	eP	04 28 19.2					
	11	LPB	P	05 17 29.4	D	0.7	11		
		PNS	eP	05 17 31.2					
	11	LPB	P	05 50 44			0.6	9	
	11	PNS	iP S	06 27 45.2 28 08.4	D	0.9	70		
		LPB	iP	06 27 45.2	D				
	11	PNS	eP	09 03 38.4					
	11	LPB	eP	10 28 43		0.6	16		
		PNS	P	10 28 47.3					
	11	PNS	P S	10 43 25.2 47					
	11	USCGS 12 10 04.9, 17.8N, 145.9E, h = 135 km., m = 4.9 MARIANA IS							
		PNS	PKP	12 29 34.4		1.0	11		
		LPB	PKP	12 29 35		1.0	26	147	
	11	PNS	eP	12 47 07					
		LPB	eP	12 47 10					
	11	USCGS 13 09 42.5, 56.3S, 25.7W, h = 35 km., m = 5.4 SOUTH SANDWICH IS REG							
		LPB	P	13 18 43.6		1.0	22	50	
		PNS	P	13 18 46.4		1.0	18		
	11	PNS	eP	19 36 09.4					
	11	PNS	P S	19 43 29.4 57.4					
	11	PNS	eP	20 39 06.6					
		LPB	eP	20 39 07					
	11	PNS	eP	21 17 50.8		0.4	2		
	11	LPB	eP	21 20 04.5					
			eL	58					
		PNS	eP	21 20 07.6					

MAY									
MONTH	DAY	STA	PHASE	TIME	SIGN	PER	AMPL	DIST	
MAY	12	LPB	iP	00 29 45.5	C	0.7	277		
			iS	30 24.5					
		PNS	iP	00 29 49.5	C				
			iS	30 32					
	12	LPB	eP	01 40 09					
		PNS	eP	01 40 11.8					
	12	PNS	P	01 56 31.5	D	0.4	3		
			S	53.6					
		LPB	eP	01 56 32					
	12	LPB	eP	02 12 46					
	12	LPB	eP	02 40 09					
	12	PNS	eP	05 35 10					
		LPB	P	05 35 11					
			e	38 53					
	12	PNS	eP	07 21 18					
			S	38.8					
	12	PNS	eP	08 44 53.3					
		LPB	e(P)	08 45 01					
	12	PNS	eP	09 23 35					
		LPB	eP	09 23 40					
	12	PNS	eP	14 05 51					
	12	PNS	eP	14 58 20.7		0.4	3		
			S	43.3					
	12	LPB	eP	16 06 11					
		PNS	eP	16 06 16.8					
	12	PNS	eP	19 12 45.6					
		LPB	eP	19 12 47					
	12	PNS	P	20 31 16.2		0.4	4		
		LPB	eP	20 31 20					
	12	PNS	eP	20 48 54.8					
			S	49 20					
	12	LPB	eP	20 50 21					
		PNS	eP	20 50 23.6					
	12	PNS	P	23 31 51.6	C				
			S	32 21.2					
		LPB	P	23 31 54.2	C	0.8	60		
			S	32 25.5					
	12	LPB	eP	23 41 09					
		PNS	eP	23 41 12.8					

MAY										
MONTH	DAY	STA	PHASE	TIME	SIGN	PER	AMPL	DIST		
MAY	13	PNS	eP	00 36 32.2						
			S	37 01.8						
	13	PNS	eP	01 45 06.7						
	13	PNS	eP	02 03 31.6						
			S	54.8						
	13	LPB	P	06 10 31.7				1.0	22	
	13	PNS	eP	08 53 10.6						
			S	38						
		LPB	eP	08 53 17.6						
	13	USCGS 09 45 13.1, 15.3S, 167.6E, h = 123 km., m = 5.3 NEW HEBRIDES IS								
		LPB	ePKP	10 03 49				116		
		PNS	ePKP	10 03 52						
	13	USCGS 14 15 52.6, 11.4N, 86.4W, h = 71 km., m = 4.8 NEAR COAST OF NICARAGUA								
		PNS	eP	14 22 20.8						
			i	30						
		LPB	eP	14 22 27				33		
	13	USCGS 14 16 52.8, 11.5N, 86.4W, h = 79 km., m = 5.6 NEAR COAST OF NICARAGUA								
		LPB	eP	14 22 32				33		
			S	28 40						
			L	34						
		PNS	P	14 23 23						
			S	28 35						
			L	33.7						
	13	PNS	eP	14 29 51.2						
	13	USCGS 14 29 50.1, 17.9S, 69.6W, h = 156 km., m = 4.0 PERU-BOLIVIA BOR REG								
		PNS	iP	14 30 25.2	D					
		LPB	iP	14 30 26.2	D	0.5	238	2		
	13	USCGS 14 19 44.8, 36.4N, 140.5E, h = 75 km., m = 5.4 NEAR EAST COAST OF HONSHU, JAPAN								
		PNS	ePKP	14 39 20.5						
		LPB	ePKP	14 39 25				148		
	13	USCGS 14 30 19.6, 7.2S, 120.9E, h = 616 km., m = 5.6 FLORES SEA								
		PNS	PKP	14 49 06.9	D					
		LPB	PKP	14 49 07	D	1.0	82	155		
			e	51 51						

MAY									
MONTH	DAY	STA	PHASE	TIME	SIGN	PER	AMPL	DIST	
MAY	13	PNS	eP	16 21 35.2					
	13	PNS	eP eS	16 37 29.6 38 06					
	13	USCGS 17 38 28.5, 11.8N, 86.2W, h = 46 km., m = 4.9 NEAR COAST OF NICARAGUA							
		LPB	eP eL	17 45 07 55				33	
		PNS	eP S eL	17 45 00.8 50 10 55.3					
	13	PNS	eP S	18 02 04.6 43.4					
	13	PNS	eP	18 18 11		1.0	5		
		LPB	eP	18 18 17.5					
	13	LPB	P	18 31 10.4					
		PNS	iP iS	18 31 14.5 38.8	D	0.4	10		
	13	PNS	eP S	19 08 17.8 39					
	13	PNS	P	19 47 14.3		0.5	3		
	13	PNS	P	19 51 25.3		0.8	5		
		LPB	eP	10 51 30					
	13	LPB	eP	23 40 05					
		PNS	eP	23 40 07.2					
	13	LPB	eP	23 55 50					
	14	LPB	iP	00 29 01.7	C	0.8q	65		
		PNS	iP S	00 29 05.4 30 10	C				
	14	USCGS 00 38 08.6, 0.3N, 124.0E, h = 167 km., m = 5.0 NORTHERN CELEBES							
		LPB	ePKP	00 57 45.5				159	
		PNS	ePKP	00 57 52					
	14	PNS	iP S	03 10 07.1 30	D				
		LPB	P	03 10 08.5 33	D	1.0	34		
	14	PNS	eP	03 16 55					
		LPB	eP	03 16 55.5					

MAY									
MONTH	DAY	STA	PHASE	TIME	SIGN	PER	AMPL	DIST	
MAY	14	LPB	eP	04 02 00					
		PNS	eP	04 02 02.7					
	14	PNS	eP	05 29 00.2					
		LPB	P	05 29 00.5		0.7	7		
	14	PNS	iP	06 31 32	D	0.5	9		
			S	54.4					
		LPB	P S	06 31 35 32 02					
	14	LPB	eP	07 55 54.5					
		PNS	eP	07 55 50.9					
	14	LPB	P	08 11 25		0.9	8		
		PNS	eP	08 11 25.2					
	14	USCGS 10 05 15.8, 35.3N, 27.8E, h = 34 km., m = 5.1 DODR CANESE IS							
		PNS	eP	10 18 36					
		LPB	eP eL	10 18 45.2 55		1.2	31	94	
	14	USCGS 12 23 46.2, 58.7S, 25.8W, h = 169 km., m = 4.8 SOUTH SANDWICH IS REG							
		PNS	eP	12 32 42					
		LPB	eP	12 32 43				52	
	14	USCGS 13 49 03.1, 11.5N, 86.2W, h = 62 km., m = 4.8 NEAR COAST OF NICARAGUA							
		PNS	P	13 55 32					
			eL	14 05.2					
		LPB	eP eL	13 55 35 14 06				33	
	14	PNS	eP	17 25 55.4					
		LPB	eP	17 25 59					
	14	PNS	eP	19 33 50					
	14	USCGS 19 32 54.2, 51.3N, 179W, h = 21 km., m = 6.2 ANDREANOF IS ALEUTIAN IS							
		LPB	eP	19 47 52					
			ePKP	39				117	
			PS	20 02 17					
			eSS	08 44					
			eL	29					
		PNS	eP	19 47 58					
			PKP	51 38					
			PS	20 02 16					
			SS	08 52					
			L	28.4					

MAY									
MONTH	DAY	STA	PHASE	TIME	SIGN	PER	AMPL	DIST	
MAY	14	USCGS 20 10		39.3, 51.3N, 179.9W, h = 15 km., m = 5.3					
		ANDREANOF IS ALEUTIAN IS							
		PNS	ePKP	20 29 24					117
		LPB	ePKP	20 29 26					
	14	USCGS 20 34		09.7, 43.3N, 146.5E, m = 5.0					
		KURILE IS							
		LPB	ePKP	20 53 39.2					140
		PNS	PKP	20 53 39.3					
	14	PNS	P	21 26 53.2					
			S	27 15.6					
	14	LPB	eP	21 55 58.6					
			S	56 22.5					
		PNS	iP	21 55 59.8					
			S	56 22.4					
	14	PNS	eP	23 06 07.6					
		LPB	eP	23 06 09					
	15	LPB	eP	00 23 24					
		PNS	eP	00 23 31.8					
			S	24 14.4					
	15	PNS	P	02 15 52					
		LPB	P	02 15 53		0.9	7		
	15	PNS	eP	04 17 12.4					
		LPB	eP	04 17 15					
	15	LPB	eP	04 21 09					
	15	LPB	P	05 25 08					
		PNS	eP	05 25 06					
	15	PNS	eP	05 27 15					
		LPB	P	05 27 15					
	15	PNS	eP	08 12 03.6					
		LPB	eP	08 12 05					
	15	USCGS 07 53		03.8, 16.1N, 121.9E, h = 57 km., m = 5.2					
		LUZON, PHILIPPINE IS							
		LPB	ePKP	08 13 07					170
		PNS	ePKP	08 13 11					
			e	14 27.8					
	15	LPB	P	08 37 28.2					
		PNS	P	08 37 32.6					
	15	LPB	eP	11 10 04					
		PNS	eP	11 10 06.6					

MAY									
MONTH	DAY	STA	PHASE	TIME	SIGN	PER	AMPL	DIST	
MAY	15	LPB	eP	11 42 05					
		PNS	eP	11 42 10					
			S	37.8					
	15	LPB	P	12 37 33.5	D	0.7	17		
		PNS	P	12 37 38.1	D	0.7	6		
	15	PNS	eP	14 32 32.9		0.5	3		
			S	55					
	15	PNS	eP	18 43 02.7					
		LPB	eP	18 43 07					
	15	USCGS 20 43		33.4, 16.8N, 61.3W, h = 50 km., m = 5.7					
		LEEWARD IS							
		PNS	iP	20 50 11.4	C	1.4	72		
			S	55 28					
			eL	21 00.9					
		LPB	P	20 50 12		0.8	70	34	
			e	56 00					
			eL	21 02					
	15	USCGS 20 39		45.8, 34.6N, 70.9E, h = 22 km., m = 5.6					
		AFGHANISTAN							
		LPB	ePKP	20 59 15					139
		PNS	ePKP	20 59 17.4					
	15	USCGS 22 38		23.2, 7.2S, 120.3E, h = 463 km., m = 5.3					
		FLORES SEA							
		LPB	eP	22 57 28					155
			PKP2	53.5					
			PPKP	59 18.5					
		PNS	PKP	22 57 29.1					
			PKP2	55.7					
			PPKP	59 18.4					
	15	LPB	eP	23 31 50					
		PNS	eP	23 31 50					
	15	PNS	eP	23 51 30					
			S	52.6					
	16	PNS	eP	01 27 37.7		1.0	8		
	16	PNS	eP	03 29 30.2					
			S	53					
	16	LPB	eP	03 55 00					
	16	LPB	eP	04 21 35					
		PNS	eP	04 21 39.9					

MAY									
MONTH	DAY	STA	PHASE	TIME	SIGN	PER	AMPL	DIST	
MAY	16	LPB PNS	eP eP	05 33 33.5 05 33 34					
	16	PNS	eP S	06 11 36.7 12 08.5					
	16	PNS LPB	eP S eP eS	06 41 02 26 06 41 07 27.5					
	16	USCGS 07 03 22.2, 27.5S, 176.6W, h = 50 km., m = 5.4 KERMADEC IS							
		LPB	P e L	07 15 51.2 17 41 49		0.8	10	97	
		PNS	eP e eL	07 15 51.4 17 34.1 49.1					
	16	PNS	eP S	11 00 20 42					
	16	LPB PNS	eP eP	11 58 37.7 11 58 47					
	16	LPB PNS	P P	12 40 10.2 12 40 14.2		0.7 0.7	16 10		
	16	PNS	eP	14 53 28.6					
	16	PNS LPB	e(P) eP S	15 15 17.7 15 15 19.7 16 21.5					
	16	PNS	P	16 35 35.4					
	16	PNS	P	16 36 41.4					
	16	USCGS 16 18 46.8, 0.5S, 99.4E, h = 50 km., m = 5.1 SOUTHERN SUMATRA							
		PNS LPB	ePKP ePKP	16 38 48 16 38 50.5				150	
	16	PNS LPB	iP S iP iS	17 06 45.8 07 18.2 17 06 48.5 07 19.5	C C	0.7	73		
	16	LPB PNS	P e(S) P	18 16 12.5 42 18 16 19.3	C	0.6	168		

MAY									
MONTH	DAY	STA	PHASE	TIME	SIGN	PER	AMPL	DIST	
MAY	16	PNS LPB	iP eP	21 46 25.8 21 46 28.5	D	0.5	13		
	16	PNS	eP	22 52 09.6					
	17	LPB	eP	02 05 18.4					
	17	LPB PNS	eP eP	05 44 58.6 05 44 59.2					
	17	USCGS 05 51 30.3, 28.3S, 129.W, h = 33 km., m = 4.9 SOUTH ATLANTIC RIDGE							
		LPB	P eL	06 00 39 16				52	
		PNS	P eL	06 00 42.6 16.3					
	17	USCGS 06 39 33.1, 19.0S, 69.4W, h = 120 km., m = 4.1 NORTHERN CHILE							
		LPB	P S	06 40 17.9 48	D	0.8	130	3	
		PNS	iP S	06 40 18.4 49.6	D				
	17	LPB	eP	07 17 15					
	17	LPB PNS	eP eP	07 44 00 07 43 56.4					
	17	PNS	iP S	07 54 28 50.6	D	0.6	20		
	17	LPB	P	07 54 30		0.7	6		
	17	LPB PNS	eP S eP	08 24 02 25 13.5 08 23 53					
	17	LPB	eP	10 43 49.5		1.0	9		
	17	LPB PNS	eP eP	14 15 40.4 14 15 40.7					
	17	PNS	P	14 53 54.1	C	0.7	12		
	17	USCGS 15 22 13.0, 27.3S, 71.0W, m = 4.7 NEAR COAST NORTHERN CHILE							
		LPB	eP eL	15 24 51.7 28.8				16	
		PNS	P eL	15 24 52.1 28.5					

MAY										
MONTH	DAY	STA	PHASE	TIME	SIGN	PER	AMPL	DIST		
MAY	17	LPB	eP	15 43 22						
		PNS	eP	15 43 23.8						
	17	PNS	eP	16 03 04						
	17	PNS	eP	17 43 57.4						
			S	44 20.8						
		LPB	eP	17 43 58						
	17	PNS	eP	19 53 09.4						
	17	LPB	eP	20 21 41						
		PNS	eP	20 21 45.8						
	17	PNS	eP	21 02 02.2						
			S	34.3						
	17	PNS	eP	22 13 42.8						
		LPB	eP	22 13 43.5						
	18	USCGS 00 15 31.5, 9.0S, 158.4E, h = 16 km., m = 5.6 SALOMON IS								
		PNS	PKP	00 34 38.6		1.0	37			
		LPB	PKP	00 34 39		1.0	40	128		
	18	PNS	eP	02 03 14.3						
			S	37.4						
	18	LPB	P	03 14 50.5						
			e	15 50.5						
		PNS	eP	03 14 51						
	18	LPB	eP	03 26 29						
	18	LPB	eP	04 23 33.5		0.7	28			
	18	PNS	eP	04 51 08						
		LPB	eP	04 51 11.5						
	18	PNS	eP	07 31 29.4						
		LPB	eP	07 31 33.4						
	18	LPB	P	08 07 34.2						
	18	USCGS 08 28 14.0, 19.9S, 69.2W, h = 124 km., m = 4.3 NORTHERN CHILE								
		LPB	iP	08 29 10.5	C	0.7	350	4		
			iS	42						
		PNS	iP	08 29 12.2	C					
			S	51						
	18	LPB	P	08 39 28.5		1.5	82			
		PNS	eP	08 39 33.8						

MAY										
MONTH	DAY	STA	PHASE	TIME	SIGN	PER	AMPL	DIST		
MAY	18	USCGS 08 44 03.6, 60.3N, 146.0W, h = 6 km., m = 5.4 SOUTHERN ALASKA								
		LPB	eP	08 57 31					98	
			eL	09 52						
	18	LPB	eP	12 57 49						
	18	PNS	P	13 20 06.3	D	0.6	10			
			S	30						
		LPB	eP	13 20 07						
	18	USCGS 13 29 55.4, 19.5S, 66.0E, m = 5.1 MASCARENE IS REG								
		LPB	ePKP	13 48 47.5					136	
		PNS	e(PKP)	13 48 51						
	18	LPB	eP	18 15 04						
		PNS	eP	18 15 05.2						
	18	LPB	eP	18 52 22.5						
			e	53 32						
		PNS	eP	18 52 24.9						
			i	30.6						
	18	PNS	eP	19 35 37.3						
	18	LPB	e(P)	19 48 28						
		PNS	eP	19 48 30.8						
	18	USCGS 20 01 34, 5.5S, 77.0W, h = 61 km., m = 4.3 NORTHERN PERU								
		PNS	eP	20 04 49						
		LPB	eP	20 04 50.5					13	
	18	USCGS 20 56 22.4, 41.4N, 143.4E, h = 52 km., m = 4.8 HOKKAIDO JAPAN REG								
		PNS	ePKP	21 15 52						
		LPB	ePKP	21 15 50.5					144	
	19	LPB	eP	00 30 40						
		PNS	eP	00 30 40.8						
	19	USCGS 01 41 30.4, 5.2S, 76.5W, m = 3.9 NORTHERN PERU								
		PNS	eP	01 44 53.4						
		LPB	eP	01 44 53.5					13	
	19	LPB	P	03 08 15.5		0.6	4			
		PNS	P	03 08 18.1						
	19	PNS	P	05 53 27.6	D	0.3	6			
			S	50						
	19	PNS	eP	07 21 04.2						
		LPB	eP	07 21 07.2					71	

MAY									
MONTH	DAY	STA	PHASE	TIME	SIGN	PER	AMPL	DIST	
MAY	21	PNS	eP S	03 48 07.8 33					
	21	LPB PNS	P P	04 28 04.5 04 28 06.8		0.6	22		
	21	PNS LPB	P eP	04 43 42 04 43 45.5					
	21	LPB PNS	eP eP	05 45 31.5 05 45 32.6					
	21	PNS LPB	eP eP	06 29 09.6 06 29 10		1.0	10		
	21	PNS LPB	eP P	07 08 08.8 07 08 14		1.0	16		
			e	13 05.5					
	21	LPB	P	09 44 36					
	21	PNS LPB	P eP	13 56 39.8 13 56 40					
	21	PNS LPB	eP eP	15 20 06.8 15 20 08.7					
	21	USCGS 15 31 59.9, 36.4N, 70.2E, h = 229 km., m = 5.0 HINDU KUSH REG							
		PNS LPB	ePKP ePKP	15 51 01.6 15 51 04				138	
	21	PNS	eP	16 33 41.2					
	21	USCGS 17 05 03.4, 4.6S, 153.2E, h = 65 km., m = 5.1 NEW IRELAND REG							
		PNS LPB	ePKP ePKP	17 24 11 17 24 17				135	
	21	LPB PNS	eP P	18 58 40.5 18 58 46					
	21	PNS LPB	eP eP	19 05 59.4 19 06 00					
	21	USCGS 19 31 15.2, 32.0S, 71.3W, h = 136 km., NEAR COAST OF CENTRAL CHILE							
		LPB PNS	eP eP	19 34 50.2 19 34 52.1				15	
	21	LPB PNS	eP P	19 56 25 19 56 28.8					
								74	

MAY									
MONTH	DAY	STA	PHASE	TIME	SIGN	PER	AMPL	DIST	
MAY	21	PNS LPB	eP eP	20 29 24.8 20 29 27					
	21	USCGS 20 35 58.4, 1.9S, 79.5W, h = 126 km., m = 3.8 ECUADOR							
		PNS LPB	P eP	20 40 03.6 20 40 05.5					18
			e	46 55					
	21	PNS	P S	23 40 41.4 41 23.6				D	
	22	LPB PNS	eP eP	00 42 30 00 41 42					
	22	USCGS 00 48 17.8, 22.4S, 68.2W, h = 162 km., m = 3.9 NORTHERN CHILE							
		LPB	P i	00 49 43 50 01.5					6
		PNS	P i	00 49 47.8 58.5					
	22	PNS	P	01 06 17					
	22	LPB PNS	eP eP	01 30 43 01 30 47					
	22	LPB PNS	eP P	03 44 50 03 44 53.1					
	22	PNS LPB	eP eP	04 53 01.1 04 53 06					
	22	LPB PNS	eP eP	06 16 47 06 16 47.5					
			S	17 18					
	22	LPB	eP	07 55 16					
	22	LPB	e(P)	09 56 10					
	22	PNS	eP	12 23 36.2					
	22	LPB	eP	12 26 30					
	22	LPB PNS	eP P	13 06 16 13 06 20.3				D	0.3 3
	22	PNS	eP	14 28 47.6					
	22	PNS	e(P)	19 09 01.4					
	22	LPB PNS	eP eP	21 03 00 21 02 56.4					
	22	LPB PNS	P iP	21 42 05.5 21 42 09.3				C	0.9 51 75

MAY									
MONTH	DAY	STA	PHASE	TIME	SIGN	PER	AMPL	DIST	
MAY	22	PNS LPB	eP eP	21 53 45.7 21 53 46					
	22	PNS	eP	21 58 05.8					
	22	USCGS 22 30 29.8, 5.7S, 103.2E, h = 68 km., m = 5.4 SOUTHERN SUMATRA							
		LPB PNS	ePKP ePKP	22 50 20 22 50 24				156	
	23	USCGS 00 06 51.3, 26.6N, 44.6W, m = 4.8 NORTH ATLANTIC RIDGE							
		PNS LPB	P P	00 15 33.8 00 15 34.2	D	1.0 1.0	50 32	48	
	23	PNS	eP S	01 37 56.8 18.7					
	23	LPB PNS	P P	03 21 53 22 17 03 21 54.2					
	23	LPB PNS	eP eP	04 00 24 04 00 29.8					
	23	PNS	eP S	04 10 21.8 34.7					
	23	LPB PNS	eP eP	05 51 10 05 51 14.8					
	23	LPB	eP	06 50 19					
	23	PNS LPB	P eP	08 53 01.3 08 53 08					
	23	USCGS 13 04 36.6, 53.4N, 160.2W, h = 32 km., m = 5.6 SOUTH OF ALASKA							
		LPB PNS	eP eP	13 18 37 13 18 39				104	
	23	LPB PNS	eP P	15 04 36.2 15 04 36					
	23	PNS LPB	eP eP	16 10 29.1 16 10 33					
	23	USCGS 16 11 21.4, 7.4N, 126.8E, h = 66 km., m = 4.9 MINDANAO P IS							
		LPB PNS	ePKP ePKP	16 31 18 16 31 23				162	
									76

MAY									
MONTH	DAY	STA	PHASE	TIME	SIGN	PER	AMPL	DIST	
MAY	23	PNS LPB	P eP	16 41 27.8 16 41 32					
	23	USCGS 17 07 42.2, 3.7N, 95.7E, h = 47 km., m = 5.2 OFF W COAST OF NORTHERN SUMATRA							
		LPB PNS	ePKP ePKP	17 27 50 17 27 51.6				159	
	23	LPB PNS	P eS P	20 18 34 19 12 20 18 37.6			1.0	54	C
	23	PNS	eP	20 48 40.6					
	23	LPB PNS	eP eP S	22 11 06 22 11 06.3 37.8					
	23	PNS	eP	22 35 44.6					
	23	LPB PNS	eP eP	23 25 00 23 25 01.6					
	23	PNS LPB	eP eP	23 56 30.9 23 56 35					
	23	PNS	P S	02 08 55.7 09 21.4					
		LPB	eP S	02 08 58.4 09 24.5					
	24	LPB PNS	eP i eP	03 18 04 19 03 03 18 52.7					
	24	PNS	eP S	04 02 22.8 47.5					
	24	LPB	eP	05 24 32.6					
	24	PNS LPB	eP S eP S	07 33 10.8 36.8 07 33 11 37.5					
	24	PNS LPB	iP S P	07 50 29.7 52.1 07 50 31.5	D			0.7	9
	24	LPB	e(P)	08 12 50					
	24	PNS LPB	eP eP	09 37 01 09 37 04.2					

MAY									
MONTH	DAY	STA	PHASE	TIME	SIGN	PER	AMPL	DIST	
MAY	24	PNS LPB	P P	09 53 49.7 09 53 54		0.8	33		
	24	PNS LPB	eP eP eL	13 21 55.9 13 21 58.5 32.7					
	24	LPB PNS	eP P	14 48 07.5 14 48 09.9					
	24	PNS	P S	15 41 41.5 42 05.1					
	24	LPB PNS	eP P	16 09 49.5 16 09 53.9					
	24	USCGS 16 27 39.4, 10.1S, 161.3E, h = 96 km., m = 5.2 SALOMON IS							
		PNS	ePKP	16 46 30					
	24	PNS	P S	18 53 20.8 46.9					
	24	LPB PNS	eP eP	20 25 32 20 25 32.9					
	24	LPB PNS	P S P	20 41 56.7 42 34 20 41 58.3		1.0	30		
	24	LPB PNS	eP eP	22 10 15 22 10 15.5					
	24	LPB	eP e	23 23 20 26 05					
	25	PNS LPB	P eP	00 28 03.2 00 28 08.5					
	25	PNS LPB	iP e iP	04 21 51.6 22 16.3 04 21 54	D D	0.8	65		
	25	LPB	eP	04 46 59					
	25	PNS LPB	eP eP	04 46 57.5 04 46 59					
	25	LPB PNS	eP eP	05 11 50.5 05 11 52.7					

MAY									
MONTH	DAY	STA	PHASE	TIME	SIGN	PER	AMPL	DIST	
MAY	25	USCGS 05 20 59.2, 11.4S, 79.5W, m = 4.2 OFF COAST PERU							
		PNS LPB	eP eP	05 23 53.9 05 23 58.5					
	25	LPB PNS	e(P) eP	06 36 39 06 36 42.1					
	25	USCGS 07 37 43.3, 21.2S, 67.1W, h = 229 km., m = 3.8 CHILE-BOLIVIA BOR REG							
		PNS LPB	iP iP eS	07 39 00.9 59 07 38 56 39 50.5	C C	0.8	105	4	
	25	LPB PNS	eP P	08 12 55.2 08 12 58.2					
	25	LPB PNS	eP eP	12 03 21.5 12 03 26.1					
	25	PNS	P S	12 59 15.3 37.9		0.3	4		
	25	LPB PNS	eP eP eS	17 46 37.5 17 46 41.2 47 51.2					
	25	LPB PNS	eP P	17 59 04 17 59 00.2					
	25	USCGS 20 18 30.0, 32.0S, 178.9W, h = 70 km., m = 5.4 SOUTH OF KERMADEC IS							
		LPB PNS	eP P	20 32 02 20 32 02.5				98	
	25	PNS	eP	21 04 09.2					
	25	USCGS 21 19 17.7, 3.4S, 78.2W, h = 100 km., m = 3.9 PERU-ECUADOR BORDER REGION							
		PNS	eP	21 23 06					
	25	USCGS 22 30 43.0, 57.7S, 25.2W, m = 5.6 SOUTH SANDWICH IS REG							
		LPB PNS	P eL P PP eL	22 39 51.4 53 22 39 54.2 41 06.5 56.5	C C	1.0 0.7	48 20	52	

MAY

MONTH	DAY	STA	PHASE	TIME	SIGN	PER	AMPL	DIST
MAY	25	PNS	P	23 36 31.4				
		LPB	P	23 36 41.5	D	1.0	34	
			i	38 32				
	26	PNS	iP	00 41 01.1	D			
		LPB	eS	31				
		LPB	P	00 41 05		0.6	8	
	26	LPB	eP	00 47 36				
		PNS	eP	00 47 40.5				
			e	48 30.8				
	26	USCGS	01 25	28.3, 7.0S, 127.6E, h = 115 km., m = 5.5				
		BANDA	SEA					
		PNS	PKP	01 45 05.6				
			i	12.3				
		LPB	PKP	01 45 06		0.9	9	150
			i	12				
	26	PNS	eP	03 54 15				
			e	20.9				
	26	PNS	eP	04 53 05.2				
	26	USCGS	05 54	18.4, 15.6N, 94.4W, h = 34 km., m = 5.1				
				NEAR COAST OF OAXACA MEXICO				
		PNS	P	06 01 59.2		1.2	36	
			eL	17.6				
		LPB	P	06 02 02		1.0	14	41
			eL	16.4				
	26	PNS	eP	09 49 56.8				
		LPB	eP	09 49 57.5				
	26	PNS	P	09 53 36.6				
			S	54 15				
		LPB	eP	09 53 40				
			eS	54 25				
	26	USCGS	11 02	05.2, 30.6S, 71.3W, h = 79 km., m = 4.2				
				NEAR COAST OF CENTRAL CHILE				
		LPB	eP	11 05 25				11
			eL	08.8				
		PNS	eP	11 05 28.4				
	26	LPB	eP	13 14 19				
		PNS	eP	13 14 25.4				
	26	LPB	eP	15 42 43				

MAY

MONTH	DAY	STA	PHASE	TIME	SIGN	PER	AMPL	DIST
MAY	26	USCGS	15 37	16.8, 11.8N, 125.8E, h = 14 km., m = 5.4				
		SAMAR,		PHILIPPINE IS				
		LPB	eP	15 57 25		1.0	20	166
	26	LPB	eP	18 27 18				
		PNS	eP	18 27 19		0.7	3	
	26	LPB	eP	18 59 30				
		PNS	P	18 59 36.1		0.6	2	
	26	USCGS	18 48	40.3, 11.7N, 125.8E, m = 5.1				
		SAMAR,		PHILIPPINE IS				
		PNS	ePKP	19 08 46				
	26	USCGS	19 46	51.0, 11.7N, 125.8E, m = 5.0				
		SAMAR,		PHILIPPINE IS				
		PNS	ePKP	20 07 06				
		LPB	ePKP	20 07 06				166
	26	PNS	P	20 38 42.3	D			
			S	39 05				
		LPB	eP	20 38 45				
	26	LPB	eP	20 43 33				
		PNS	eP	20 43 37				
	26	LPB	eP	21 41 20		0.7	18	
		PNS	P	21 41 20.7		0.6	9	
	26	LPB	eP	23 40 51				
		PNS	eP	23 40 52.3				
	27	PNS	eP	03 03 09.6				
		LPB	P	03 03 12.4	C	0.8	22	
			e(S)	45.5				
	27	USCGS	03 59	26.2, 23.2S, 66.3W, h = 215 km., m = 4.0				
		JUJUY,		PROV. ARGENTINA				
		LPB	iP	04 01 07	D	0.9	408	7
		PNS	iP	04 01 11	D			
	27	USCGS	04 34	32.9, 10.7S, 161.8E, h = 41 km., m = 4.8				
		SALOMON		IS				
		LPB	ePKP	04 53 28				123
		PNS	ePKP	04 53 29				
	27	LPB	P	05 17 28.5				
	27	LPB	P	05 48 20.2				
		PNS	eP	05 48 24		0.9	8	

MAY

MONTH	DAY	STA	PHASE	TIME	SIGN	PER	AMPL	DIST	
MAY	27	LPB	eP	06 18 52					
		PNS	P	06 18 53					
	27	PNS	eP	09 02 48.6					
		LPB	eP	09 02 49					
	27	PNS	eP	09 05 45.3					
		LPB	e	55.8		1.0	10		
			e	06 54.6					
	27	LPB	P	09 11 13		1.0	10		
	27	LPB	eP	09 30 17					
		PNS	eP	09 30 22					
	27	USCGS 09 27 03.8, 0.2S, 125.0E, m = 5.3 MOLUCCA SEA							
		LPB	ePKP	09 47 03.4				158	
		PNS	ePKP	09 47 03.6					
	27	PNS	eP	12 06 03.6					
		LPB	eP	12 06 05		1.0	18		
	27	USCGS 12 18 45.6, 59.9S, 26.5W, h = 19 km., m = 5.1 SOUTH SANDWICH IS REG							
		LPB	P	12 28 02				54	
			i	13.6					
			eL	44.6					
		PNS	eP	12 28 03					
			i	15.8					
			S	35 45					
			eL	46.1					
	27	LPB	eP	12 43 45					
		PNS	P	12 43 46.2		0.7	8		
	27	PNS	eP	12 47 29.3					
	27	USCGS 14 15 00.0, 37.1N, 116.0W, m = 5.0 SOUTHERN NEVADA							
		PNS	eP	14 26 06					
		LPB	eP	14 26 14				69	
	27	PNS	P	16 38 36.4					
		LPB	eP	16 38 43					
	27	USCGS 16 29 30.5, 8.8S, 124.1E, h = 30 km., m = 5.3 TIMOR							
		LPB	ePKP	16 49 27				151	
		PNS	PKP	16 49 27.3					

MAY

DAY	STA	PHASE	TIME	SIGN	PER	AMPL	DIST	
27	PNS	iP	19 30 23	D				
	LPB	P	19 30 24.5		0.9	25		
		e	48.5					
27	PNS	iP	22 05 07.7	D				
	LPB	P	22 05 10	D	0.8	62		
27	PNS	P	23 05 40.2					
		S	06 10					
	LPB	P	23 05 43					
		eS	06 15.2					
27	PNS	eP	23 32 27					
		S	55.2					
28	PNS	P	01 08 23					
		S	45.2					
28	PNS	eP	01 22 37.4					
	LPB	eP	01 22 48.5					
28	PNS	eP	02 36 23.8					
28	USCGS 03 41 01.8, 11.8N, 125.8E, h = 6 km., m = 5.3 SAMAR, PHILIPPINE IS							
	PNS	PKP	04 01 11.5					
	LPB	ePKP	04 01 12				165	
28	LPB	eP	07 58 57					
28	USCGS 08 31 05.9, 10.8S, 118.5E, m = 5.3 SOUTH OF SUMBAWA IS							
	PNS	ePKP	08 51 03.8					
	LPB	PKP	08 51 04		0.9	11	150	
28	LPB	eP	09 16 07					
28	USCGS 09 52 35.8, 1.2S, 77.3W, h = 201 km., m = 4.0 ECUADOR							
	PNS	eP	09 56 26.4		0.8	7		
	LPB	eP	09 56 31				17	
28	PNS	eP	10 49 30.2					
	LPB	eP	10 49 32.5					
28	USCGS 11 41 11.9, 55.5S, 28.6W, m = 4.9 SOUTH SANDWICH IS REG							
	LPB	eP	11 49 59.6				49	
		eL	12 04.8					
	PNS	P	11 50 02.2	D	0.8	21		
28	PNS	eP	12 59 12.5					
	LPB	P	12 59 13.5					
28	PNS	eP	13 28 07.7					
	LPB	P	13 28 09.2		0.8	22		

MAY											MAY										
MONTH	DAY	STA	PHASE	TIME	SIGN	PER	AMPL	DIST	MONTH	DAY	STA	PHASE	TIME	SIGN	PER	AMPL	DIST				
MAY	28	USCGS 13 30 08.9, 2.1S, 76.9W, h = 177 km., m = 5.5 PERU-ECUADOR BOR REG								MAY	29	PNS	eP	09 43 22.6							
		PNS	eP	13 33 44.7							LPB	eP	14 02 01.4								
		LPB	eP	13 33 50.5				16			LPB	eP	14 02 01.9								
	28	PNS	P	18 00 06		0.6	5				LPB	eP	16 30 14								
			S	27.1							PNS	P	16 30 18.4								
	28	LPB	eP	20 11 40							LPB	eP	16 37 40								
		PNS	P	20 11 43.4		1.0	10				PNS	P	16 37 41.8		0.6	4					
	28	LPB	eP	20 52 22.5							LPB	eP	18 20 50								
		PNS	P	20 52 24.8		0.6	4				PNS	eP	18 20 50								
	28	LPB	P	23 18 45		1.0	20				29	PNS	eP	18 35 26.8							
		PNS	P	23 18 44.6		1.0	13				USCGS 20 25 56.2, 14.7N, 90.6W, h = 218 km., m = 4.8 GUATEMALA										
	29	PNS	eP	00 12 59.8							PNS	P	20 32 54		1.0	10					
	29	PNS	eP	00 19 35.7							LPB	eP	20 32 57					38			
		LPB	eP	00 19 37.5							29	PNS	eP	21 18 46.4							
	29	LPB	eP	00 26 28.5								S	19 09.5								
		PNS	eP	00 26 33							29	LPB	eP	21 25 26							
	29	LPB	eP	03 13 20								i	26 11								
	29	LPB	eP	03 26 18.5							PNS	P	21 25 34.8		0.6	3					
		PNS	eP	03 26 21								i	26 07								
	29	LPB	P	05 18 18.6							29	LPB	eP	22 28 01.5							
			eS	55							PNS	eP	22 28 04.4								
		PNS	eP	05 18 19							USCGS 22 49 02.4, 7.4N, 72.9W, h = 145 km., m = 4.0 NORTHERN COLOMBIA										
	29	LPB	P	06 01 15							PNS	P	22 54 06		0.6	28					
		PNS	P	06 01 18.5							LPB	eP	22 54 08.3					23			
	29	PNS	P	07 09 12.2							30	LPB	eP	02 58 28.5							
		LPB	P	07 09 17							PNS	eP	02 58 29.2		0.9	7					
			i	33							30	LPB	eP	03 34 29							
	29	PNS	P	07 34 01.7							30	LPB	eP	03 37 18.5							
		LPB	P	07 34 04.2							PNS	eP	03 37 22.6								
	29	PNS	eP	08 11 03.6							30	PNS	eP	03 48 03.4							
		LPB	eP	08 11 10							LPB	P	03 48 09		0.9	8					
	29	LPB	eP	08 21 12.5							USCGS 08 38 46.8, 15.7N, 147.3E, h = 14 km., m = 4.8 MARIANA IS REG.										
		PNS	PKP	08 58 29.1		1.4	50				PNS	PKP	08 58 29.1		1.4	50					
		LPB	PKP	08 58 30.5		1.4	37		146		LPB	PKP	08 58 30.5		1.4	37					

MAY

MONTH	DAY	STA	PHASE	TIME	SIGN	PER	AMPL	DIST	
MAY	28	USCGS 13 30 08.9, 2.1S, 76.9W, h = 177 km., m = 5.5 PERU-ECUADOR BOR REG							
		PNS	eP	13 33 44.7				16	
		LPB	eP	13 33 50.5					
	28	PNS	P	18 00 06		0.6	5		
			S	27.1					
	28	LPB	eP	20 11 40					
		PNS	P	20 11 43.4		1.0	10		
	28	LPB	eP	20 52 22.5					
		PNS	P	20 52 24.8		0.6	4		
	28	LPB	P	23 18 45		1.0	20		
		PNS	P	23 18 44.6		1.0	13		
	29	PNS	eP	00 12 59.8					
	29	PNS	eP	00 19 35.7					
		LPB	eP	00 19 37.5					
	29	LPB	eP	00 26 28.5					
		PNS	eP	00 26 33					
	29	LPB	eP	03 13 20					
	29	LPB	eP	03 26 18.5					
		PNS	eP	03 26 21					
	29	LPB	P	05 18 18.6					
			eS	55					
		PNS	eP	05 18 19					
	29	LPB	P	06 01 15					
		PNS	P	06 01 18.5					
	29	PNS	P	07 09 12.2					
		LPB	P	07 09 17					
			i	33					
	29	PNS	P	07 34 01.7					
		LPB	P	07 34 04.2					
	29	PNS	eP	08 11 03.6					
		LPB	eP	08 11 10					
	29	LPB	eP	08 21 12.5					
		PNS	eP	08 21 17.6					
	29	USCGS 08 38 46.8, 15.7N, 147.3E, h = 14 km., m = 4.8 MARIANA IS. REG.							
		PNS	PKP	08 58 29.1		1.4	50	146	
		LPB	PKP	08 58 30.5		1.4	37		

MAY

MONTH	DAY	STA	PHASE	TIME	SIGN	PER	AMPL	DIST	
MAY	29	PNS	eP	09 43 22.6					
			S	45.8					
	29	PNS	eP	14 02 01.4					
		LPB	eP	14 02 01.9					
	29	LPB	eP	16 30 14					
		PNS	P	16 30 18.4					
			S	40.8					
	29	LPB	eP	16 37 40					
		PNS	P	16 37 41.8		0.6	4		
	29	LPB	eP	18 20 50					
		PNS	eP	18 20 50					
	29	PNS	eP	18 35 26.8					
	29	USCGS 20 25 56.2, 14.7N, 90.6W, h = 218 km., m = 4.8 GUATEMALA							
		PNS	P	20 32 54		1.0	10	38	
		LPB	eP	20 32 57					
	29	PNS	eP	21 18 46.4					
			S	19 09.5					
	29	LPB	eP	21 25 26					
			i	26 11					
		PNS	P	21 25 34.8		0.6	3		
			i	26 07					
	29	LPB	eP	22 28 01.5					
		PNS	eP	22 28 04.4					
	29	USCGS 22 49 02.4, 7.4N, 72.9W, h = 145 km., m = 4.0 NORTHERN COLOMBIA							
		PNS	P	22 54 06		0.6	28	23	
		LPB	eP	22 54 08.3					
	30	LPB	eP	02 58 28.5					
		PNS	eP	02 58 29.2		0.9	7		
	30	LPB	eP	03 34 29					
	30	LPB	eP	03 37 18.5					
		PNS	eP	03 37 22.6					
	30	PNS	eP	03 48 03.4					
		LPB	P	03 48 09		0.9	8		
	30	USCGS 02 50 17.4, 17.4N, 157.4W, h = 17.4 km., m = 4.0 MARIANA IS. REG.							
		PNS	P	02 50 17.4				85	
		LPB	P	02 50 17.4					

MAY										
MONTH	DAY	STA	PHASE	TIME	SIGN	PER	AMPL	DIS		
MAY	30	USCGS 05 56 37.8, 9.7S, 118.7E, h = 7 km., m = 5.1 SUMBAWA IS REG								
		PNS	ePKP	06 16 36					151	
		LPB	ePKP	06 16 40						
	30	PNS	iP	10 56 06.9	D					
			S	30						
		LPB	P	10 56 10						
			S	39.5						
	30	LPB	eP	11 14 30						
		PNS	eP	11 14 30.4						
	30	PNS	eP	11 30 05.8						
		LPB	eP	11 30 08						
	30	LPB	eP	16 01 20.2						
			i	19 50						
		PNS	eP	16 01 25.7						
	30	USCGS 15 55 37.1, 32.2S, 178.1W, h = 34 km., m = 5.2 SOUTH OF KERMADEC IS								
		PNS	eP	16 09 11					97	
		LPB	eP	16 09 13						
	30	LPB	eP	16 33 26						
		PNS	eP	16 33 27.4						
	30	LPB	eP	16 36 20						
		PNS	eP	16 36 21.2						
	30	PNS	eP	20 31 54.4						
		LPB	eP	20 32 00						
	30	USCGS 23 19 37.7, 7.0S, 129.8E, h = 104 km., m = 4.8 BANDA SEA								
		PNS	ePKP	23 39 14.7					150	
			i	22.4						
		LPB	ePKP	23 39 17						
			i	22.3						
	31	PNS	eP	02 21 54.4						
			S	22 17						
		LPB	eP	02 22 02						
	31	USCGS 02 56 11.8, 7.5S, 155.6E, h = 104 km., m = 4.9 SALOMON IS								
		PNS	ePKP	03 15 15					130	
		LPB	PKP	03 15 17.4		1.0	10			
	31	LPB	eP	03 22 23						
		PNS	eP	03 22 23.6						
	31	LPB	eP	04 32 03.3						
	31	LPB	P	06 10 32.5						

MAY										
MONTH	DAY	STA	PHASE	TIME	SIGN	PER	AMPL	DIST		
MAY	31	PNS	eP	06 25 16.8						
		LPB	eP	06 25 23						
	31	PNS	eP	06 31 00.3						
		LPB	eP	06 31 00.5						
	31	LPB	eP	08 28 25						
	31	LPB	eP	10 35 34						
		PNS	eP	10 35 36.2						
	31	USCGS 11 07 17.1, 1.8S, 77.7W, h = 172 km., m = 5.1 ECUADOR								
		PNS	P	11 11 06.7					160	
			S	14 21						
		LPB	P	11 11 12		1.0	146	16		
			iS	14 26						
	31	USCGS 15 54 45.0, 16.7S, 69.9N, h = 204 km., m = 3.9 PEPU-BOLIVIA BOR REG								
		PNS	iP	15 55 19.6	D				2	
		LPB	iP	15 55 23	D					
	31	PNS	eP	16 37 46.8						
	31	PNS	eP	17 23 00.5						
			S	27.3						
		LPB	eP	17 23 06.5						
			S	23						
	31	LPB	P	21 33 02						
	31	USCGS 22 24 32.0, 16.0S, 172.9W, h = 15 km., m = 5.2 SAMOA IS REG								
		LPB	eP	22 38 11					99	
			eL	23 11						
		PNS	eL	23 11						
	31	LPB	eP	22 54 03.2						
		PNS	eP	22 54 05.1						
	31	USCGS 23 54 17.1, 22.8S, 66.4W, h = 236 km., m = 4.6 JUJUY, PROV. ARGENTINA								
		LPB	eP	23 55 52					7	
			S	57 12.6						
		PNS	P	23 55 56.8						
			eS	57 14.5						
	31	USCGS 23 20 45.1, 5.3S, 142.9E, h = 110 km., m = 4.8 WEST NORTH COAST OF NEW GUINEA								
		PNS	ePKP	23 40 11.8						
		LPB	ePKP	23 40 18.5						

JUNE

MONTH	DAY	STA	PHASE	TIME	SIGN	PER	AMPL	DIST
JUNE	01	USCGS 23 56		21.6, 4.9S, 154.2E, h = 403 km., m = 5.5				
		SALOMON IS						
		PNS	PKP	00 14 52.8		2.0	33	
			PP	17 44.7				
		LPB	PKP	00 14 54		1.5	137	133
			PP	17 45.4				
	01	LPB	eP	00 45 07				
		PNS	eP	00 45 16				
	01	USCGS 01 58		03.4, 27.5N, 139.8E, h = 482 km., m = 4.9				
		BAMIN IS REG						
		PNS	PKP	02 17 05.3		0.8	17	
			e	19 04				
		LPB	ePKP	02 17 06.6		0.9	27	151
			e	19 06.5				
	01	LPB	eP	02 26 44				
		PNS	eP	02 26 44.1				
			eS	08.8				
	01	LPB	P	04 51 13.2				
		PNS	eP	04 51 17				
	01	PNS	P	05 12 57.4		0.4	4	
	01	LPB	P	03 19 23		1.0	44	
		PNS	P	05 19 25.4		1.0	15	
	01	PNS	eP	05 49 17.5				
		LPB	eP	05 49 20				
	01	USCGS 06 07		11.3, 9.8S, 78.9W, h = 49 km., m = 4.8				
		NEAR COAST OF NORTHERN PERU						
		PNS	eP	06 10 02				
		LPB	eP	06 10 10				123
	01	LPB	eP	06 37 09.7				
	01	LPB	eP	07 25 25				
	01	LPB	P	09 33 12.4	C	0.7	28	
		PNS	P	09 33 15.8				
	01	LPB	eP	12 57 30				
		PNS	P	13 57 35.1				
			iS	57.6				

JUNE

MONTH	DAY	STA	PHASE	TIME	SIGN	PER	AMPL	DIST
JUNE	01	USCGS 13 15		57.1, 16.4S, 73.7W, h = 48 km., m = 4.5				
		NEAR COAST OF PERU						
		PNS	P	13 17 14.2				
			S	18 16				
			L	19				
		LPB	P	13 17 19	D	0.9	221	5
			eS	18 20				
			eL	19.2				
	01	USCGS 13 49		06.8, 3.3N, 126.6E, h = 46 km., m = 5.3				
		TALAUD IS						
		LPB	ePKP	14 09 00				160
		PNS	ePKP	14 09 05.7				
	01	PNS	P	14 14 44.9				
			S	15 09.8				
	01	PNS	eP	14 40 56.6				
		LPB	eP	14 41 02.5				
	01	LPB	eP	14 47 10				
		PNS	P	14 47 11.3				
	01	PNS	iP	15 46 56.6	D			
			iS	47 19.2				
		LPB	eP	15 47 00.5				
			S	21				
	01	LPB	e(P)	15 56 01				
	01	LPB	eP	16 08 28.5				
		PNS	eP	16 08 31.8				
	01	LPB	eP	16 24 18				
		PNS	eP	16 24 18.4				
	01	PNS	eP	16 37 47.7				
			S	38 10.9				
	01	LPB	eP	16 55 20				
		PNS	eP	16 55 22.6				
	01	PNS	eP	18 58 43				
		LPB	P	18 58 48.6				
			eL	19 12.5				
	01	USCGS 19 53		12.4, 31.7S, 178.2W, h = 17 km., m = 5.0				
		KERMADEC IS						
		PNS	eP	20 06 41				
	01	USCGS 23 20		45.5, 3.3S, 142.9E, h = 110 km., m = 4.8				
		NEAR NORTH COAST OF NEW GUINEA						
		PNS	ePKP	23 40 11.2				
		LPB	ePKP	23 40 18.5				

JUNE									
MONTH	DAY	STA	PHASE	TIME	SIGN	PER	AMPL	DIST	
JUNE	02	LPB	e(P)	00 48 45.4					
	02	PNS	eP	01 05 20					
	02	PNS	iP	03 13 09	D				
			iS	37					
		LPB	eP	03 13 10.2					
			eS	38					
	02	USCGS 05 39 41.2, 12.9N, 143.4E, h = 127 km., m = 4.8 SOUTH OF MARIANA IS							
		PNS	ePKP	05 59 13					
		LPB	PKP	05 59 15.4			149		
	02	LPB	P	07 56 21.5					
		PNS	eP	07 56 26					
	02	PNS	eP	08 03 40.9					
			S	03.6					
	02	USCGS 11 07 36.6, 8.4S, 74.3W, h = 149 km., m = 5.0 PERU BRASIL BOR REG							
		PNS	P	11 09 53.5					
		LPB	P	11 09 58.5		1.0	66	10	
			e	12 42					
	02	PNS	eP	11 26 10.8					
	02	PNS	eP	13 21 02.5					
	02	LPB	P	14 49 31.5		0.8	45		
		PNS	iP	14 49 33	D				
			S	50 05.1					
	02	PNS	eP	16 07 58.7					
	02	LPB	eP	17 34 51.5					
	02	LPB	eP	18 46 49					
		PNS	eP	18 46 51.2		1.0	9		
	02	LPB	eP	19 00 00					
		PNS	eP	19 00 03.3		0.6	3		
	02	PNS	P	23 04 33.9	C	0.6	34		
			eS	05 08.8					
		LPB	P	23 04 38.5	C				

JUNE									
MONTH	DAY	STA	PHASE	TIME	SIGN	PER	AMPL	DIST	
JUNE	02	LPB	P	23 59 23.2		1.0	20		
		PNS	P	23 59 26.8	C	0.5	12		
	03	PNS	eP	00 57 43.2					
		LPB	eP	00 57 46.3					
	03	LPB	eP	02 22 11.8					
		PNS	eP	02 22 12					
	03	PNS	iP	04 07 03.1					
		LPB	P	04 07 04					
	03	USCGS 03 58 01.5, 19.1N, 107.5W, m = 5.1 OFF COAST OF JALISCO, MEXICO							
		PNS	P	04 07 11.4					
			eS	14 38					
			eL	25					
		LPB	P	04 07 15.7		1.0	12	52	
			eS	14 40					
			eL	25.2					
	03	PNS	eP	04 25 39					
		LPB	eP	04 25 45.5					
	03	LPB	eP	06 45 58.5					
	03	LPB	eP	08 34 54					
	03	LPB	eP	08 40 52.6					
			eS	41 34					
		PNS	eP	08 40 52.8					
			eS	41 34.8					
	03	PNS	eP	09 16 15.4					
		LPB	P	09 16 20.4		0.9	8		
	03	PNS	eP	10 20 31					
		LPB	eP	10 20 34					
	03	PNS	eP	11 29 17.2					
		LPB	eP	11 29 18					
	03	PNS	eP	12 34 18.4					
		LPB	eP	12 34 20					
	03	USCGS 13 26 07.7, 12.4N, 125.7E, h = 48 km., m = 5.0 SAMAR, PHILIPPINE IS							
		PNS	ePKP	13 46 10.6					
		LPB	ePKP	13 46 14.6				166	

JUNE									
MONTH	DAY	STA	PHASE	TIME	SIGN	PER	AMPL	DIST	
JUNE	03	LPB	eP	16 37 36.2					
		PNS	P	16 37 38.2		0.5	6		
03	03	PNS	eP	18 13 15.8					
		LPB	iP	18 13 24.5	C	0.7	42		
03	03	USCGS 18 51 27.8, 4.6S, 152.9E, h = 64 km., m = 4.8 NEW BRITAIN REG							
		PNS	ePKP	19 10 32					
03	03	PNS	eP	20 24 59.6					
		LPB	eP	20 25 05					
03	03	USCGS 21 53 06.5, 40.2N, 143.7E, m = 4.8 OFF EAST COAST OF HONSHU, JAPAN							
		LPB	ePKP	22 12 39				144	
03	03	PNS	ePKP	22 12 44					
		USCGS 22 39 21.2, 21.2S, 68.5W, h = 141 km., m = 4.4 CHILE-BOLIVIA BORDER REG.							
03	03	LPB	iP	22 40 33	C	0.9	130	4	
		PNS	iP	22 40 36.4	C				
03	03	PNS	eP	22 53 27					
		LPB	eP	22 53 28.5					
04	04	USCGS 00 39 57.5, 41.4N, 79.5E, m = 4.9 KIRGIZ-SINKIANG BOR REG							
		LPB	ePKP	00 59 33				142	
04	04	PNS	eP	01 20 16.7					
		LPB	eP	01 20 18.5					
04	04	LPB	eP	03 44 35					
		PNS	eP	03 44 37.2					
04	04	PNS	eP	04 24 39.2					
		LPB	ePKP	04 24 46					
04	04	PNS	iP	04 40 25.8	C				
		LPB	eS	04 40 26.7	C	0.9	19		
04	04	LPB	P	05 54 48.5	C	0.7	40		
		PNS	iP	05 54 51.9	C				
04	04	PNS	eP	09 33 46					
04	04	PNS	eP	09 53 01					92
		LPB	eP	09 53 04					

JUNE									
MONTH	DAY	STA	PHASE	TIME	SIGN	PER	AMPL	DIST	
JUNE	04	PNS	eP	10 21 40.8					
		LPB	eP	10 21 43					
04	04	LPB	eP	12 57 54					
		PNS	iP	12 57 55.3	D				
04	04	USCGS 16 41 16.8, 7.0S, 129.9E, h = 93 km., m = 5.1 BANDA SEA							
		PNS	PKP	17 00 56.2			1.0	17	
04	04	LPB	PKP	17 01 02.3					
		LPB	PKP	17 00 56.3			1.0	40	150
04	04	USCGS 19 38 12.6, 29.0N, 142.4E, m = 4.8 SOUTH OF HONSHU, JAPAN							
		LPB	ePKP	19 58 00					149
04	04	PNS	ePKP	19 58 00.2					
		USCGS 20 17 25.6, 15.2N, 122.3E, h = 29 km., m = 5.1 PHILIPPINE IS REG							
04	04	PNS	eP	20 17 52.2					
		LPB	eP	20 17 59					
04	04	USCGS 20 37 34.4, 11.9N, 43.8W, m = 4.9 NORTH ATLANTIC RIDGE							
		PNS	P	20 42 20.5			1.0	22	
04	04	LPB	P	20 42 20.7			1.3	40	
		PNS	eP	23 46 02.9					
05	05	LPB	eP	01 59 42					
		PNS	P	01 59 42.6					
05	05	PNS	eP	02 22 10.6					
		LPB	P	02 22 17					
05	05	PNS	eP	02 56 12.8					
		LPB	eP	02 56 13					
05	05	PNS	eP	03 14 24					
		LPB	P	03 14 28.5					
05	05	PNS	eP	04 58 56.7					
		LPB	eP	04 59 00					
05	05	LPB	eP	06 50 24					
		PNS	eP	06 50 25.5					

JUNE								
MONTH	DAY	STA	PHASE	TIME	SIGN	PER	AMPL	DIST
JUNE	05	LPB	eP	07 45 46.6				
	05	PNS LPB	iP P	07 48 37.3 07 48 48	C	0.6	17	
	05	PNS LPB	P eP	08 05 36 08 05 38.7	D	0.6	7	
	05	PNS LPB	eP eS eP	08 32 39.2 08 32 33 30 08 32 41				
	05	LPR PNS	eP P	09 06 10 09 06 17.2	D	0.4	7	
	05	PNS LPB	eP eP	09 16 50.6 09 16 57.6				
	05	PNS LPB	eP e	09 22 01 09 22 18				
	05	LPB	eP	09 22 02 09 22 14				
	05	PNS LPB	eP eP	09 35 33.6 09 35 36				
	05	USCGS 10 45 43.5, 4.9N, 96.3E, m = 5.3 NORTHERN SUMATRA						
		PNS LPB	ePKP ePKP	11 05 48 11 05 49.5				16
	05	USCGS 10 59 59.1, 71.2S, 129.1E, h = 156 km., m = 5.1 BANDA SEA						
		LPB	ePKP	11 19 31				15
			i	38.7				
		PNS	ePKP	11 19 32.3				
			i	38.8				
	05	PNS	eP	12 54 34.5				
			S	59.3				
	05	LPB	eP	14 36 51				
		PNS	eP	14 36 55.8				
	05	LPB	eP	16 27 57.5				
	05	LPB	eP	16 32 24				
		PNS	eP	16 32 26				
	05	USCGS 17 20 16.4, 1.9N, 127.4E, h = 97 km., m = 5.2 HALMAHERA						
		LPB	ePKP	17 40 04.2				15
			PKP2	43				
		PNS	ePKP	17 40 07				
			PKP2	44				9

JUNE										
MONTH	DAY	STA	PHASE	TIME	SIGN	PER	AMPL	DIST		
JUNE	05	USCGS 20 39 58.9, 10.7N, 41.0W, m = 5.2 NORTH ATLANTIC RIDGE								
		LPB	P	20 47 18.5			0.9	110	38	
			S	53 16						
			eL	57.7						
		PNS	iP	20 47 19	C					
			S	53 18						
			eL	58.6						
	05	USCGS 20 55 34.4, 6.3N, 126.3E, h = 42 km., m = 4.9 MINDANAO, PHILIPPINE IS								
		PNS	ePKP	21 15 35						
	05	PNS	eP	22 14 12.6						
			S	36						
	05	LPB	eP	23 38 52.5						
		PNS	eP	23 38 55.8						
	06	PNS	eP	03 06 46.2						
		LPB	eP	03 06 50						
	06	LPB	eP	05 03 13.4						
		PNS	eP	05 03 15.8						
	06	PNS	eP	05 26 12.8						
		LPB	eP	05 26 16						
	06	PNS	eP	05 52 26.6						
			eL	06 07.4						
		LPB	P	05 52 32.5						
			eL	06 07						
	06	PNS	P	07 35 08						
			S	33.4						
	06	PNS	eP	07 50 06.8						
			S	29						
		LPB	eP	07 50 13						
	06	PNS	iP	08 59 42.2	D					
			S	09 00 05						
	06	LPB	eP	09 27 15						
		PNS	eP	09 27 16.6						
	06	LPB	eP	12 09 38						
			i	57.8						
		PNS	P	12 09 39						
			i	10 17.2						
	06	USCGS 12 12 25.5, 60.3S, 25.3W, m = 5.3 SOUTH SANDWICH IS REG								
		LPB	P	12 21 44.5	C	0.8	30	53		
		PNS	iP	12 21 47	D	0.9	24	95		

JUNE

MONTH	DAY	STA	PHASE	TIME	SIGN	PER	AMPL	DIST
JUNE	06	LPB PNS	eP P	12 26 39 12 26 41.8				
	06	USCGS SOUTH SANDWICH IS	14 08 16.4, 60.8S, 29.9W, m = 5.0					
		LPB PNS	eP P	14 17 33.2 14 17 35.8		0.8	12	53
	06	PNS LPB	eP eP	16 32 59.6 16 33 05				
	06	LPB PNS	eP eP	16 35 04.5 16 35 06.6				
	06	USCGS BANDA SEA	19 30 05.6, 7.2S, 127.8E, h = 182 km., m = 4.9					
		PNS LPB	PKP PKP	19 49 41 19 49 40.5		0.6	12	162
	06	USCGS NORTHERN CHILE	22 25 37.3, 22.6S, 68.4W, h = 125 km., m = 5.0					
		LPB PNS	P iP	22 27 06.0 22 27 09.3	C	0.8	40	6
			S	28 14 28 20				
	07	PNS LPB	eP eP	00 49 35.8 00 49 36.4				
	07	LPB PNS	e(P) e(P)	02 31 41 02 31 45				
	07	USCGS DRAKE PASSAGE	04 03 01.1, 61.4S, 62.3W, m = 5.3					
		LPB PNS	P P	04 11 15.3 04 11 18		1.0	22	45
			i	12 57.5		1.0	22	
	07	USCGS NEAR COAST OF ECUADOR	08 27 32.8, 2.2S, 79.8W, h = 90 km., m = 4.5					
		PNS LPB	eP P	08 31 38.4 08 31 43.5		1.0	25	
			e	35 50		1.2	32	18
	07	PNS LPB	eP eP	10 01 51 10 01 53.6				

JUNE

MONTH	DAY	STA	PHASE	TIME	SIGN	PER	AMPL	DIST
JUNE	07	PNS LPB	eP eP	13 03 46 04 08 13 03 53 04 31.5				
	07	PNS LPB	P eP	13 42 04.1 13 42 05				
	07	PNS LPB	eP eP	16 35 16.2 16 35 18.6				
	07	LPB PNS	eP P	16 48 24 16 48 25.8		1.0	10	
			eS	49 06.5	C			
			eS	49 07.8				
	07	LPB PNS	eP eP	17 14 30.5 17 14 33.8				
	07	LPB PNS	eP eP	17 14 30.5 17 14 33.8				
	07	USCGS FOX ISLANDS ALEUTIAN IS.	22 47 15.4, 52.5N, 169.1W, h = 42 km., m = 5.2					
		LPB PNS	eP P	23 13 34 23 13 37.2				
	08	LPB PNS	eP eP	01 11 25.2 38.5 01 11 25.5 38				
	08	PNS P	P	01 26 29				
	08	PNS LPB	eP eP	01 20 13.3 01 20 15				
	08	PNS LPB	P eP	02 54 47.4 02 54 49	D	0.5	5	
	08	LPB P	P	05 19 02				
	08	LPB PNS	eP eP	05 57 12.5 06 27 38.2 06 27 38.7				
	08	PNS LPB	eP P	07 05 24.8 07 05 29.2				
	08	LPB LPB	eP e(P)	07 53 00 07 53 10.6				
	08	PNS LPB	iP S eP	08 31 21.2 43.3 08 31 23.8	D			

JUNE

MONTH	DAY	STA	PHASE	TIME	SIGN	PER	AMPL	DIST
JUNE	08	PNS	P	08 37 21.4				
		LPB	P	08 37 28.5	C	0.8	88	
			e(S)	38 03.2				
08	PNS	iP		12 22 29.9	D			
		S		56.6				
08	LPB	P		12 22 31		0.8	15	
		iS		57.6				
08	USCGS NORTH OF HALMAHEPA	12 10		16.8, 4.2N, 128.3E, h = 76 km., m = 4.8				
		LPB	ePKP	12 30 10				159
		PNS	ePKP	12 30 13				
08	PNS	eP		12 35 30.8				
		eP		12 35 34				
08	LPB	eP		13 50 03				
		eP		13 50 06.4				
08	USCGS NEAR COAST OF CENTRAL CHILE	14 52		17.9, 36.5S, 73.6W, h = 30 km., m = 5.0				
		LPB	P	14 56 57.2		1.0	32	21
		S		15 02 54				
			eL	03.6				
		PNS	eP	14 56 58.8				
			S	15 01 03				
08	USCGS NEAR EAST COAST OF KAMCHATKA	14 49		31.6, 53.3N, 159.7E, h = 60 km., m = 5.4				
		PNS	ePKP	15 08 31				
		LPB	PKP	15 08 33		1.0	24	128
			eL	52				
08	LPB	eP		17 08 51.7				
		eP		17 08 53				
08	LPB	eP		20 09 40.2				
		eP		20 09 42.2				
08	LPB	eP		21 45 39				
		eP		21 45 44.7				
08	USCGS SOUTH OF FIJI IS	21 40		13.4, 25.3S, 179.6W, h = 412 km., m = 5.0				
		LPB	eP	22 53 43				101
		PNS	eP	22 53 46.1				
09	LPB	P		00 51 34				
		S		52 03.5				
		PNS	iP	00 51 36.8	D			
			iS	52 05.1				

JUNE

MONTH	DAY	STA	PHASE	TIME	SIGN	PER	AMPL	DIST
JUNE	09	LPB	eP	00 59 26.8				
		eS		01 00 09				
		PNS	eP	00 59 34.9				
			S	01 00 18.6				
09	USCGS TAIWAN	01 55		00.4, 23.7N, 120.9E, h = 46 km., m = 5.0				
		PNS	ePKP	02 15 02				
		LPB	ePKP	02 15 06				169
09	LPB	P		02 41 47				
		PNS	eP	02 41 44.4		1.0	12	
						1.0	11	
09	LPB	eP		03 54 51				
		eP		03 54 54.9				
			S	55 20.4				
09	LPB	eP		04 29 31.2				
09	LPB	eP		04 48 41.6				
		PNS	P	04 48 44.8				
09	PNS	eP		05 24 23.1				
		P		05 24 23.4				
09	LPB	eP		05 27 16				
		eP		05 27 16.7				
09	PNS	eP		05 37 22				
		eP		05 37 25.5				
			eL	44				
09	USCGS WEST CHILE RISE	06 18		52.1, 39.9S, 91.7W, m = 4.6				
		LPB	P	06 25 11				
		PNS	P	06 25 11.1		1.2	16	31
						1.4	30	
09	PNS	iP		06 43 20.9	D			
		S		47.5				
09	LPB	P		06 43 21.2	D	0.8	15	
		eS		45				
09	USCGS NEAR NORTH COAST OF NEW GUINEA	06 51		16.1, 3.2S, 142.9E, h = 17 km., m = 5.2				
		PNS	PKP	07 10 50.7				
			i	57.5		1.0	12	
		LPB	PKP	07 10 51.0				
			i	58.4		1.0	14	144
			L	08				

JUNE

MONTH	DAY	STA	PHASE	TIME	SIGN	PER	AMPL	DIST	
JUNE	09	PNS LPB	eP eP	08 10 16.7 08 10 20.2					
	09	LPB PNS	eP eP	09 08 35 09 08 38					
	09	LPB PNS	iP P S	09 14 54.4 09 14 56.3 15 34.4	C	1.0	10		
	09	LPB PNS	eP I eP	09 45 09.5 10 01 09 45 12.2					
	09	LPB PNS	eP eP	10 47 50 10 47 57.5					
	09	LPB PNS	P iS P iS	12 00 57 01 21 12 00 57.6 01 22		0.6	16		
	09	LPB PNS	eP eP	14 41 24 14 41 26.2					
	09	PNS	P	15 04 04.2					
	09	LPB PNS	eP eP	16 41 24 16 41 24					
	09	USCGS 17 44 56.7, 8.5S, 80.5W, m = 4.9 OFF COAST OF NORTHERN PERU							
		LPB	P i L	17 48 16 30 53.4				23	
		PNS	eP L	17 48 16.8 53.3					
	09	PNS LPB	P eP	17 51 16.7 17 51 20					
	09	LPB PNS	eP eP	21 36 44 21 36 45.2					
	09	USCGS 21 53 01.8, 23.5S, 175.0W, m = 5.5 TONGA IS REG							
		PNS LPB	eP eP L	22 06 39.4 22 06 40 38.5				98	
	09	PNS LPB	eP P	22 50 41 22 50 50.5		1.0	14		
	09	USCGS 23 09 43.6, 44.0N, 148.9E, h = 50 km., m = 5.1 KURILE IS							
		LPB PNS	ePKP ePKP	23 29 04 23 29 07.4				139 100	

JUNE

MONTH	DAY	STA	PHASE	TIME	SIGN	PER	AMPL	DIST	
JUNE	10	LPB PNS	eP eP	00 19 08 00 19 12.6					
	10	PNS LPB	iP S eP e eL	01 16 43.4 17 05.5 01 16 50 17 08.5 02 18	D				
	10	LPB PNS	P eP eS	02 15 56.4 02 15 57.6 16 39.6		0.9	17		
	10	PNS LPB	P P	03 14 08.9 03 14 09	C	0.9 0.8	23 15		
	10	PNS LPB	eP eP eL	03 57 05.2 03 57 13.7 04 08					
	10	LPB PNS	eP eP	04 54 04.5 04 54 07.4					
	10	LPB PNS	P P S	06 19 33.4 06 19 36.5 00 30	C				
	10	PNS LPB	eP P eL	06 28 23.8 06 28 39 55		1.0	24		
	10	PNS LPB	eP P eL	06 43 41.4 06 43 47 55					
	10	PNS	iP S	09 43 13.8 38	D				
	10	USCGS 10 39 29.4, 22.2S, 112.2W, m = 4.8 EASTER IS REG							
		PNS LPB	P P	10 47 16.7 10 47 19.3	D	1.0 1.0	23 14	41.4	
	10	LPB PNS	eP eP	11 05 41 11 05 42.8					
	10	PNS LPB	eP eL eP eL	12 43 35.8 53.8 12 43 37 54					
	10	PNS LPB	P eP	13 09 39.6 13 09 45					

JUNE

MONTH	DAY	STA	PHASE	TIME	SIGN	PER	AMPL	DIST
JUNE	10	PNS	eP	13 11 17.2				
		LPB	eP	13 11 21				
10	10	PNS	P	15 30 16.9				
		LPB	P	15 30 25.7		1.0	24	
10	10	PNS	P	16 35 34.6				
		LPB	P	16 35 39.5				
10	10	PNS	eP	17 28 22.2				
		LPB	eP	17 28 24				
10	10	USCGS 17 15 29.4, 13.2N, 121.4E, h = 37 km., m = 5.4 MINDORO, PHILIPPINE IS						
		PNS	ePKP	17 35 40.8				
10	10	PNS	eP	20 19 10				
		LPB	eP	20 19 11.5				
10	10	PNS	P	20 33 04.0				
		LPB	eP	20 53 08.2				
10	10	USCGS 22 52 12.1, 36.4N, 70.7E, h = 203 km., m = 5.4 HINDU KUSH REGION						
		LPB	P	23 11 16.5		1.0	24	139
			eL	00 59				
		PNS	PKP	23 11 16.7		1.2	21	
10	10	USCGS 23 30 53.7, 36.3N, 70.4E, h = 213 km., m = 5.2 HINDU KUSH REG						
		LPB	ePKP	23 49 55				139
		PNS	PKP	23 49 56.9		1.0	13	
11	11	USCGS 00 58 10.1, 59.6N, 144.8W, h = 5 km., m = 5.3 GULF OF ALASKA						
		PNS	eP	01 11 40.5				
		LPB	eP	01 11 45				97
11	11	USCGS 01 05 01.3, 59.6N, 144.8W, h = 12 km., m = 4.9 GULF OF ALASKA						
		LPB	eL	01 07				97
		PNS	eP	01 37 30				
11	11	USCGS 03 36 22.0, 55.2S, 30.2W, h = 34 km., m = 5.0 SOUTH SANDWICH IS REG						
		PNS	eP	03 36 22.0				
11	11	USCGS 23 09 43.0, 44.3N, 146.8E, h = 50 km., m = 5.3 KURILE IS						
		LPB	ePKP	23 26 04				102

JUNE

MONTH	DAY	STA	PHASE	TIME	SIGN	PER	AMPL	DIST	
JUNE	11	LPB	P	03 45 02					
			eS	52 02			1.1	35	48
		PNS	P	03 45 05		C	0.9	33	
11	11	USCGS 04 48 20.3, 1.1N, 98.8E, h = 53 km., m = 5.3 NORTHERN SUMATRA							
		LPB	ePKP	05 08 56				159	
		PNS	ePKP	05 08 59.4					
11	11	LPB	eP	06 04 06					
		PNS	eP	06 04 06.4					
11	11	USCGS 06 51 10.9, 2.5S, 12.2W, m = 5.0 NORTH OF ASCENSION IS							
		PNS	eP	07 00 54					
		LPB	eP	07 00 55					
			eL	18					
11	11	PNS	eP	07 57 02.4					
		LPB	eP	07 57 05.7					
11	11	PNS	eP	11 24 08.7					
		LPB	eP	11 24 16					
11	11	LPB	eP	13 18 25					
		PNS	eP	13 18 26.4					
11	11	PNS	eP	13 37 09.2					
		PNS	eP	13 37 09.2					
11	11	LPB	eP	13 57 06					
		PNS	eP	13 57 07.6					
11	11	PNS	P	14 08 07			0.6	3	
		LPB	eP	14 08 08.5					
11	11	LPR	eP	14 35 24					
		PNS	eP	14 35 29.6					
11	11	USCGS 15 11 17.4, 27.4N, 139.9E, h = 500 km., m = 4.8 BANIN IS REG							
		LPB	ePKP	15 30 09				151	
			i	32 19					
11	11	USCGS 15 11 17.4, 27.4N, 139.9E,							
		LPB	ePKP	15 30 09				151	
			i	32 09					
			e	12					
11	11	PNS	PKP	15 30 11.1		1.0	10		
			i	18					
			e	32 17.7					

JUNE

MONTH	DAY	STA	PHASE	TIME	SIGN	PER	AMPL	DIST
JUNE	11	LPB	eP	16 15 14				
		PNS	eP	16 15 16.4				
11	PNS	eP	S	17 45 11.6				
				40.8				
11	LPB	eP	eS	17 51 40.5				
				52 17.7				
11	PNS	eP	eS	19 32 19.8				
				49.2				
11	USCGS	21 15 32.6, 8.6S, 79.7W, h = 81 km., m = 5.0						
		NEAR COAST OF NORTHERN PERU						
11	PNS	eP	S	21 18 39.7				
				21 26				
				23.5				
10	LPB	eP	eL	21 18 44.8		1.0	22	13
				23.4				
11	LPB	P	iP	23 55 01.4		0.6	14	
				23 55 03.2	D			
11	PNS	P	S	23 58 31	D			
				55.2				
12	PNS	eP	eP	01 57 23.2				
				01 57 26				
12	LPB	eP	P	eS	02 19 18			
					02 19 25.7			
					57			
12	PNS	eP	P	03 12 51.8				
				03 12 55.7				
				17.5				
12	LPB	e(P)		04 24 35.4				
12	PNS	eP	LPB	07 08 30				
				07 08 35.2				
12	USCGS	07 41 25.1, 40.3N, 143.7E, m = 5.1						
		OFF EAST COAST HONSHU, JAPAN						
12	LPB	PKP	e	08 01 01				144
				09.5				
				49.8				
11	PNS	ePKP	eL	08 00 55.8				
				08 50				
12	PNS	eP		09 04 03.8				
12	LPB	iP	PNS	10 17 51.5	C	0.7	50	
				10 17 55.4	C			

JUNE

MONTH	DAY	STA	PHASE	TIME	SIGN	PER	AMPL	DIST
JUNE	12	LPB	eP	11 11 35				
		PNS	P	11 11 37.8				
12	PNS	eP		13 02 58.3				
12	PNS	P	LPB	13 47 08.6		0.4	6	
				13 47 13				
12	USCGS	15 13 31.1, 34.4N, 25.1E, h = 25 km., m = 5.8						
		CRETE						
12	LPB	eP	PNS	15 27 28.5				102
				15 27 33				
12	LPB	eP	PNS	15 30 51				
				15 30 55.1				
12	USCGS	15 46 42.4, 32.4S, 14.0W, m = 5.1						
		SOUTH ATLANTIC RIDGE						
12	LPB	P	eL	15 55 45				51
				16 10				
				15 55 46.7		1.0	7	
				16 10.9				
12	PNS	eP	LPB	17 18 51.2				
				17 18 54				
12	USCGS	18 59 08.1, 24.0N, 122.4E, m = 5.3						
		TAIWAN REG.						
12	PNS	PKP	LPB	19 19 16.2		1.2	12	
				19 19 19				167
12	USCGS	20 28 31.9, 56.5S, 25.3W, h = 9 km., m = 5.5						
		SOUTH SANDWICH IS REG						
12	LPB	P	eL	20 37 38.4				51
				54.3				
12	PNS	iP	S	20 37 41.2	C			
				45 01				
12	PNS	P		20 41 07		0.8	18	
				42 49.2				
12	PNS	eP	S	21 02 42.1				
				03 42.4				
				21 02 48				
12	LPB	eP	PNS	22 26 10.2				
				22 26 14.3				
13	LPB	eP		00 28 24.5				

JUNF

MONTH	DAY	STA	PHASE	TIME	SIGN	PER	AMPL	DIST
JUNE	13	USCGS 01 00 42.8, 17.0S, 71.3W, h = 126 km., m = 4.0 NEAR COAST OF PERU						
		PNS	iP	01 01 28.4	D			
			S	02 02				
		LPB	iP	01 01 32.8	D	0.8	285	3
			S	02 05				
	13	LPB	p	01 40 14.8		1.0	10	
		PNS	eP	01 40 16.2				
	13	LPB	p	04 59 50		0.8	27	
		PNS	p	04 59 54	C			
	13	LPB	eP	05 28 00.7				
	13	USCGS 05 28 35.4, 34.8S, 69.9W, h = 107 km., m = 4.4 CHILE-ARGENTINA BOR REG						
		LPB	eP	05 32 47				18
		PNS	eP	05 32 48				
	13	USCGS 08 35 16.6, 17.1S, 69.5N, 198 km., m = 4.5 PERU-BOLIVIA REG						
		LPB	p	08 35 50.6	D			1
			S	36 36				
		PNS	p	08 35 52.6	D			
	13	PNS	p	08 44 12.6				
			S	39.6				
		LPB	eP	08 44 20.5				
	13	USCGS 08 48 29.5, 49.4N, 155.5E, h = 64 km., m = 5.9 KURILE IS						
		PNS	PKP	09 07 38.3	C	1.4	131	
			SS	27 30				
			eL	51.8				
		LPB	PKP	09 07 38.7		1.4	166	132
			i(PP)	10 10				
			eL	52				
	13	PNS	eP	09 35 54				
			eS	36 44				
		LPB	eP	09 36 02				
	13	LPB	eP	10 10 57				
			iS	11 34				
		PNS	eP	10 11 08.2				
			eS	45.4				
	13	LPB	p	10 32 39				
		PNS	eP	10 32 39.5				
			S	33 06.3				

JUNE

MONTH	DAY	STA	PHASE	TIME	SIGN	PER	AMPL	DIST
JUNE	13	PNS	e(P)	11 23 49				
	13	PNS	p	11 35 28.5		0.5	4	
	13	PNS	eP	13 23 18.4				
			S	40				
	13	USCGS 16 19 01.4, 6.1S, 82.1W, h = 32 km., m = 4.9 OFF COAST OF NORTHERN PERU						
		LPB	eP	16 22 56				17
			eL	28.3				
		PNS	p	16 22 56.2				
	13	PNS	iP	17 12 06.5	C			
		LPB	p	17 12 12		0.4	32	
	13	LPB	p	18 45 23.7		1.0	30	
		PNS	p	18 45 24				
	13	PNS	iP	20 14 56	D	0.5	13	
			S	18.6				
		LPB	eP	20 14 58.5				
	13	LPB	eP	21 55 30				
		PNS	eP	21 55 30				
	13	USCGS 23 06 24.2, 36.0S, 96.1W, m = 4.5 WEST CHILE RISE						
		PNS	eP	23 12 44.9		1.0	24	
			eL	21.7				
		LPB	eP	23 12 46.5				31
			eL	20.8				
	13	LPB	eP	23 24 30.5				
		PNS	p	23 24 34.4				
	14	PNS	eP	01 18 38.3				
		LPB	eP	01 18 39.5				
	14	PNS	eP	02 56 07				
		LPB	eP	02 56 11.5				
	14	USCGS 03 22 56.8, 7.9S, 159.0E, h = 62 km., m = 6.0 SALOMON IS						
		PNS	PKP	03 41 57.3		0.8	33	
			L	04 23.9				
		LPB	PKP	03 41 58		0.7	46	
			e	45 17.4				
			L	04 23				

JUNE

MONTH	DAY	STA	PHASE	TIME	SIGN	PER	AMPL	DIST
JUNE	14	USCGS TIBET	03 28	29.6, 31.7N, 94.6E, m = 5.3				
		LPR	ePKP	03 48 28				158
		PNS	ePKP	03 48 30				
	14	LPR	eP	03 55 06				
		PNS	eP	03 55 07.3				
	14	PNS	eP	06 17 59.4				
			i	18 01.9				
		LPR	P	06 18 06.2				
	14	PNS	P	08 16 38.8				
			S	17 00.8				
		LPR	eP	08 16 40				
	14	USCGS WEST NEW GUINEA	09 24	15.4, 2.2S, 137.8E, h = 113 km., m = 4.8				
		LPR	PKP	09 43 50.5				148
			i	45 30.5				
		PNS	PKP	09 43 53.4	1.0	15		
	14	USCGS EAST NEW GUINEA REG	09 26	10.6, 5.6S, 145.5E, h = 114 km., m = 5.2				
		PNS	ePKP	09 45 21.2				
			i	30				
		LPR	PKP	09 45 21	1.0	17		140
	14	LPR	P	11 13 58	0.9	85		
	14	PNS	eP	12 14 08.8				
		LPR	eP	12 14 13.6				
	14	USCGS CRETE	13 47	24.2, 34.3N, 25.1E, h = 9 km., m = 5.0				
		PNS	eP	14 01 08.4				
	14	PNS	P	14 42 21.9	D	0.5	4	
			S	44.7				
		LPR	eP	14 42 23.3				
	14	PNS	eP	14 48 28.8				
			S	51.8				
	14	PNS	eP	16 31 05.5				
		LPR	eP	16 31 12.5				
	14	LPR	P	21 04 22.4	1.2	90		
		PNS	eP	21 04 24				

JUNE

MONTH	DAY	STA	PHASE	TIME	SIGN	PER	AMPL	DIST
JUNE	14	PNS	eP	22 00 13.1				
	14	USCGS SOUTH OF HONSHU, JAPAN	21 52	26.7, 29.4N, 141.4E, h = 100 km., m = 4.8				
		PNS	PKP	22 12 07.8				
		LPR	PKP	22 12 08.5		1.0	16	150
	14	LPR	eP	23 09 00				
		PNS	eP	23 09 02.2				
	15	USCGS NEAR COAST OF OAXACA, MEXICO	03 34	58.7, 15.9N, 49.5W, h = 57 km., m = 4.9				
		PNS	eP	03 42 34.6				
			eL	55.7				
		LPR	eP	03 42 39				42
			eL	55.3				
	15	LPR	P	04 36 38.5	C	0.6	42	
		PNS	iP	04 36 41.4	C	0.7	55	
	15	USCGS TIMOR	04 25	01.6, 8.6S, 124.0E, h = 36 km., m = 5.1				
		LPR	ePKP	04 44 57				
		PNS	ePKP	04 44 58.5				152
	15	LPR	P	07 05 56.7	C	0.7	43	
		PNS	eP	07 06 00.6	C	0.6	18	
	15	PNS	eP	08 45 37.1				
			S	46 01.5				
	15	LPR	eP	13 09 15.2				
		PNS	eP	13 09 18.9				
	15	PNS	eP	13 33 14.8				
		LPR	eP	13 33 18				
	15	LPR	P	16 14 04.5				
	15	PNS	iP	16 37 16.9	P			
		LPR	P	16 37 17.2				
	15	USCGS SOUTHERN SUMATRA	16 56	32.0, 4.7S, 102.2E, h = 38 km., m = 5.3				
		LPR	ePKP	17 16 20				157
			eL	18 12				
	15	PNS	P	17 39 36.4				
			S	40 00				

JUNE

MONTH	DAY	STA	PHASE	TIME	SIGN	PER	AMPL	DIST
JUNE	15	LPB	eP	19 54 42				
		PNS	eP	19 54 49.2				
15	PNS	iP		19 56 02.5	D			
		iS		25.6				
		LPB	eP	19 56 04.5				
16	16	LPR	eP	00 48 09.6				
16	16	LPR	eP	04 18 53.7				
16	PNS	eP		06 46 20.6				
		LPR	eP	06 46 22				
16	16	LPB	eP	08 22 12.6				
16	LPB	P		09 00 23.6				
		i		42.5				
16	PNS	P		09 00 24				
		S		56.9				
16	PNS	eP		13 43 33.8				
		LPB	eP	13 43 30				
16	16	PNS	eP	14 55 28.8				
16	LPB	eP		15 32 45.8				
		PNS	eP	15 32 52.6				
		S		33 27.6				
16	16	USCGS BANDA SEA		15 45 53.3, 4.9S, 125.7E, h = 38 km., m = 5.4				
16	PNS	PKP		16 05 54		1.4	37	
		LPB	PKP	16 05 54.4		1.1	30	154
		eL		17 00				
16	PNS	P		16 34 40.5		0.5	7	
		LPB	eP	16 34 46.5				
16	16	USCGS NEAR COAST OF PERU		17 15 09.6, 17.2S, 72.8W, h = 80 km., m = 4.4				
16	PNS	P		17 16 15				
		eL		18.7				
		P		17 16 20.6				
16	LPB	i		17 49.5				
		eP		20 03 00				
		eL		21.6				
16	16	PNS	eP	20 03 01.5				
16	PNS	P		20 14 11				
		LPB	eP	20 14 11.6				

JUNE

MONTH	DAY	STA	PHASE	TIME	SIGN	PER	AMPL	DIST
JUNE	16	LPB	eP	23 44 22.4				
		PNS	P	23 44 26.4				
17	17	PNS	eP	00 26 36.6				
17	PNS	P		00 38 31.6				
		iS		54.2				
		LPB	eP	00 38 34.4				
		S		39 00				
17	17	USCGS CHILE-ARGENTINA BOR REG		01 16 21.7, 24.3S, 68.6W, h = 99 km., m = 4.3				
17	LPB	P		01 18 16.7		0.9	11	8
		e		19 00				
		PNS	P	01 18 17.2				
		e		19 16.8				
17	LPB	P		02 49 56.4		1.2	15	
		PNS	P	02 49 56.7				
17	LPB	P		03 47 28				
		PNS	eP	03 47 30.9				
17	PNS	P		05 34 21.1	D			
		iS		44.3				
		LPB	P	05 34 23.6				
		S		49				
17	PNS	eP		05 39 48.3				
		LPB	P	05 39 50.1		1.2	27	
17	PNS	eP		08 55 41.2				
		LPB	P	08 55 37.2				
17	LPB	eP		10 08 31				
		PNS	eP	10 08 33				
17	PNS	P		15 53 21.9				
		LPB	eP	15 33 22				
17	LPB	eP		17 38 56				
		PNS	e(P)	17 38 58.5				
		S		39 53.6				
17	LPB	e(P)		19 41 29.4				
		PNS	eP	19 41 31.4				
17	17	USCGS MARIANA IS		19 26 28.9, 19.0N, 145.5E, h = 206 km., m = 5.8				
17	PNS	PKP		19 45 49.2	C			
		i		55 51				
		eL		20 36.4				

JUNE									
MONTH	DAY	STA	PHASE	TIME	SIGN	PER	AMPL	DIST	
JUNE		LPB	p	19 45 49.6		1.0	360	148	
			e	55 52					
	17	LPB	iP	21 51 36.4	D				
	17	LPB	eP	23 31 26					
		PNS	p	23 31 30.7					
	17	LPB	p	23 47 55					
			S	48 27.7					
		PNS	p	23 47 58.9					
			S	48 39.6					
	18	USCGS 23 58 10.1, 52.6S, 159.7E, m = 5.1							
		MUCOUARTE IS REG							
		PNS	ePKP	00 11 46.8					
			S	23 05					
			i	40 30					
			eL	44.6					
		LPB	e(P)	00 11 47.2				99	
			S	23 06					
			i	40 32					
			e(L)	44.4					
	18	PNS	p	00 30 39.6					
		LPB	p	00 30 45.6					
	18	PNS	p	01 11 27.5	D				
		LPB	eP	01 11 31					
	18	PNS	eP	01 36 50					
			S	37 14.6					
		LPB	eP	01 36 55					
	18	PNS	p	03 14 22.2					
		LPB	p	03 14 27.8					
	18	PNS	p	03 43 10.1					
		LPB	eP	03 43 11.5					
	18	PNS	p	04 02 17.5					
		LPB	p	04 02 20					
	18	LPB	eP	04 16 06					
		PNS	eP	04 16 06.7					
	18	LPB	p	05 47 37					
		PNS	eP	07 47 40.3					
	18	PNS	eP	07 15 08.4					
		LPB	eP	07 15 10.5					
	18	LPB	eP	07 17 06					

JUNE									
MONTH	DAY	STA	PHASE	TIME	SIGN	PER	AMPL	DIST	
JUNE	18	LPB	p	09 06 54.6					
		PNS	p	09 06 58.6		0.8		12	
	18	LPB	eP	10 12 06.5					
	18	USCGS 10 54 42.6, 5.1S, 151.6E, h = 124 km., m = 4.8							
		NEW BRITAIN REG							
		PNS	ePKP	11 13 51					
		LPB	ePKP	11 13 53				135	
	18	PNS	p	12 45 56.1					
			S	46 25.8					
	18	USCGS 13 53 51.1, 2.6S, 78.1W, h = 115 km., m = 4.3							
		ECUADOR							
		PNS	eP	13 57 38.8					
		LPB	eP	13 57 43.2				16	
	18	PNS	p	15 29 30					
			S	58.2					
		LPB	eP	15 29 32.5					
	18	USCGS 20 43 19.2, 0.5N, 126.1E, h = 5 km., m = 5.3							
		MOLUCCA PASSAGE							
		LPB	ePKP	21 03 22				158	
			eL	59					
		PNS	ePKP	21 03 22.4					
	18	PNS	eP	22 30 51.2					
			S	31 13.5					
	19	LPB	eP	00 03 07.7					
	19	PNS	p	00 33 05.1					
		LPB	eP	00 33 05.2					
	19	LPB	p	01 10 46.5					
			eS	11 34.5					
		PNS	iP	01 10 50	D				
			S	11 40					
	19	PNS	eP	04 01 42.5					
		LPB	eP	04 01 48.5					
	19	PNS	p	04 08 22.3					
		LPB	eP	04 08 23.7					
	19	LPB	eP	07 17 22.2					
			S	18 24.5					

JUNE

MONTH	DAY	STA	PHASE	TIME	SIGN	PER	AMPL	DIST
JUNE	19	USCGS 07 03 04.9, 28.1N, 130.0E, h = 45 km., m = 5.5 RYUKYU ISLANDS						
		PNS	ePKP	07 23 01				
		LPB	ePKP	07 23 02				159
	19	LPB	eP	07 58 18				
	19	PNS	P	08 17 42.2				
			S	18 05.2				
		LPB	eP	08 17 44.4				
	19	LPB	eP	08 57 05				
			eS	32				
		PNS	eP	08 57 09.2				
			eS	45				
	19	LPB	eP	09 25 13.5				
	19	PNS	eP	10 05 56.2				
	19	LPB	eP	10 10 30.5				
			eS	11 24.2				
		PNS	iP	10 10 35.8				
	19	PNS	eP	11 49 32.4				
			S	55.2				
	19	LPB	eP	14 41 46				
		PNS	eP	14 41 52.1				
	19	PNS	eP	15 06 03.4				
		LPB	P	15 06 07.6		1.0	24	
	19	PNS	eP	19 15 47				
		LPB	eP	19 15 50.5				
	20	LPB	eP	02 56 24.5				
	20	PNS	eP	03 07 26.5		0.8	7	
		LPB	P	03 07 27.1		1.2	21	
	20	USCGS 04 34 16.5, 22.1S, 68.1W, h = 132 km., m = 4.3 NORTHERN CHILE						
		LPB	P	04 35 38.5	D	0.9	65	5
			S	36 40				
		PNS	iP	04 35 42	D			
	20	PNS	iP	05 40 25	D			
			S	50.4				
		LPB	iP	05 40 28	D	0.8	75	
			S	40 55.2				

JUNE

MONTH	DAY	STA	PHASE	TIME	SIGN	PER	AMPL	DIST
JUNE	20	LPB	eP	06 22 31				
	20	USCGS 06 41 06.2, 38.6N, 141.8E, h = 86 km., m = 5.4 NEAR EAST OF HONSHU, JAPAN						
		PNS	PKP	07 00 36.6	D			
		LPB	PKP	07 00 38	D	0.9	300	146
	20	USCGS 06 44 00.7, 2.6N, 128.5E, h = 77 km., m = 5.4 HALMAHERA						
		PNS	ePKP	07 03 58.4				
	20	PNS	eP	09 36 33				
			S	56.3				
	20	PNS	P	12 48 04.7				
			S	29.2				
	20	LPB	eP	14 05 52				
		PNS	eP	14 05 54.1				
	20	USCGS 15 37 50.2, 40.8N, 142.1E, h = 67 km., m = 5.4 NEAR EAST COAST OF H. JAPAN						
		PNS	ePKP	15 57 18.7				
			eL	16 46.9				
		LPB	ePKP	15 57 21.2				138
			eL	16 47				
	20	PNS	eP	17 47 35.7				
		LPB	eP	17 47 38				
	20	PNS	eP	19 48 56.5				
	20	LPB	eP	22 14 34.5				
		PNS	eP	22 14 39.4				
	21	PNS	P	01 36 17.2				
			S	46.7				
		LPB	eP	01 36 19.2				
			S	45				
	21	LPB	eP	04 28 26				
			e	29 00				
		PNS	eP	04 28 28.1				
	21	LPB	P	05 20 49.6				
		PNS	eP	05 20 52.3				
	21	LPB	P	06 00 28.2		0.6	9	
		PNS	P	06 00 31.2				
	21	USCGS 06 16 27.9, 62.5S, 161.5W, m = 5.3 SOUTH PACIFIC CORDILLERA						

JUNE

MONTH	DAY	STA	PHASE	TIME	SIGN	PER	AMPL	DIST
JUNE		PNS	eP	06 28 19.2				
			eL	52				
		LPB	P	06 28 20.5				77
			L	52.2				
21		USCGS SAMAP	06 36 43.1, 11.3N, 125.3E, h = 73 km., m = 5.3					
		PNS	PKP	06 56 43.4				
		LPB	PKP	06 56 43.5		1.0	30	166
21		PNS	eP	07 55 00				
		LPB	P	07 55 12.5				
21		PNS	P	08 03 31.9	C			
			S	58.7				
		LPB	P	08 03 32	C	0.8	34	
			S	59.4				
21		USCGS LUZON	07 47 24.4, 13.3N, 122.8E, h = 23 km., m = 5.2					
		PNS	PKP	08 07 36				
			PKP2	08 45.2				
		LPB	PKP	08 07 36		1.5	49	168
			eL	09 08				
21		LPB	P	10 46 24.5		0.6	12	
		PNS	P	10 46 27.2				
21		PNS	iP	10 59 30.7	D			
			S	56.4				
		LPB	eP	10 59 33.6				
			S	11 00 02				
21		PNS	P	11 28 47.2				
		LPB	P	11 28 58.5				
21		LPB	P	14 01 27.6		0.8	30	
		PNS	P	14 01 31.6	C	0.6	13	
21		PNS	P	15 05 21.1	D			
			S	46.8				
		LPB	eP	15 05 22.7				
21		PNS	eP	15 09 02.4				
		LPB	eP	15 09 21				
21		USCGS JAVA SEA	15 12 10, 5.5S, 109.6E, h = 561 km., m = 5.6					
		PNS	PKP	15 31 06.8		1.6	137	
			PKP2	45.2				
		LPB	PKP	15 31 07				158
			PKP2	44				

JUNE

MONTH	DAY	STA	PHASE	TIME	SIGN	PER	AMPL	DIST
JUNE	21	LPB	eP	16 35 16.5				
		PNS	eP	16 35 17.1				
21		USCGS SOUTHERN IRAN	16 35 08.3, 27.4N, 57.5E, h = 65 km., m = 5.3					
		PNS	ePKP	16 54 11				
		LPB	ePKP	16 54 12.6				129
21		USCGS SOUTHERN BOLIVIA	18 22 05.6, 21.4S, 66.2W, h = 228 km., m = 4.2					
		LPB	iP	18 23 25.2	C	0.7	170	5
			S	24 24.5				
		PNS	iP	18 23 29.1	C			
			S	24 30				
21		PNS	eP	18 31 35.9				
21		PNS	iP	22 40 24				
		LPB	P	22 40 25				
21		USCGS OFF COAST OF CENTRAL CHILE	23 29 27.1, 38.9S, 75.2W, m = 4.2					
		LPB	eP	23 34 34				23
		PNS	eP	23 34 34.2				
21		PNS	eP	23 49 33				
		LPB	eP	23 49 36.3				
22		PNS	iP	00 22 26.8				
		LP	S	51				
22		USCGS TIBET INDIA BOR REG	01 33 24.1, 30.6N, -79.4E, h = 19 km., m = 5.4					
		PNS	PKP	01 53 07.9				
		LPB	PKP	01 53 08		1.8	72	
22		USCGS KURILE IS REG	02 33 52.8, 49.2N, 158.5E, m = 5.6					
		PNS	PKP	02 53 01.5	D	1.2	44	
		LPB	PKP	02 53 03		1.0	44	131
			eL	03 53				
22		LPB	eP	04 42 09.2				
		PNS	eP	04 42 12.4				
22		LPB	eP	07 07 50.5				
		PNS	eP	07 07 48.7				

JUNE

MONTH	DAY	STA	PHASE	TIME	SIGN	PER	AMPL	DIST
JUNE	22	USCGS 08 17 26.7, 6.9N, 73.0W, h = 164 km., m = 4.1 NORTHERN COLOMBIA						
		PNS	eP	08 22 23.3				23
		LPB	eP	08 22 23.3		0.8	9	
	22	PNS	P	10 15 00.4	D			
		LPB	eP	10 15 09.5				
	22	USCGS 10 47 52.2, 55.3S, 29.4W, h = 36 km., m = 5.2 SOUTH SANDWICH IS REG						
		LPB	P	10 56 36		1.0	20	49
			i	43				
			eL	11 14				
		PNS	P	10 56 39.7		0.8	16	
	22	PNS	iP	11 04 03.6				
		LPB	P	11 04 05				
	22	LPB	eP	11 14 31				
		PNS	P	11 14 40.4		1.0	22	
	22	PNS	P	11 22 12.4				
		LPB	P	11 22 15.5				
	22	PNS	P	11 30 48	C			
			S	31 25.6				
		LPB	P	11 30 52.5				
			eS	31 34.5				
	22	LPB	L	11 41.6				
	22	USCGS 12 31 01.9, 13.9S, 75.2W, h = 123 km., m = 4.4 PERU						
		PNS	P	12 32 44.6				
		LPB	P	12 32 50.5		1.0	22	7
	22	PNS	eP	13 25 19.2				
		LPB	eP	13 25 24				
	22	LPB	iP	13 55 14.5	D			
			S	47				
		PNS	P	13 55 18.8				
			eS	56.4				
	22	USCGS 14 30 10.7, 16.9N, 93.6W, h = 151 km., m = 5.1 CHIAPAS, MEXICO						
		PNS	P	14 37 42.7		0.6	16	
		LPB	P	14 37 47				42
			eL	47.2				

JUNE

MONTH	DAY	STA	PHASE	TIME	SIGN	PER	AMPL	DIST
JUNE	22	LPB	eP	16 35 16.2				
		PNS	eP	16 35 14.5				
	22	PNS	eP	18 59 38.8				
		LPB	eP	19 00 02				
	22	LPB	P	21 37 43.2		0.8	75	
			S	38 16.6				
		PNS	iP	21 37 44	C			
			eS	38 18				
	22	LPB	eP	23 59 19				
		PNS	eP	23 59 33.5				
	23	USCGS 00 17 56.5, 49.3S, 164.2E, h = 27 km., m = 5.3 AUCLAND IS REG						
		PNS	eP	00 31 34				
		LPB	eP	00 31 37				100
	23	PNS	iP	01 12 21.2				
		LPB	eP	01 12 22.5				
	23	LPB	P	01 33 51.7		1.0	20	
		PNS	P	01 33 54.6	C	0.8	12	
	23	PNS	eP	03 33 20.6				
		LPB	eP	03 33 21.5				
	23	LPB	eP	03 53 13.5				
	23	LPB	eP	04 37 15.5				
	23	PNS	iP	05 52 26.8	D			
			S	52.2				
		LPB	P	05 52 30.5				
	23	LPB	eP	05 59 46				
		PNS	P	05 59 51				
	23	USCGS 05 57 06.9, 37.4N, 141.5E, m = 5.0 NEAR EAST COAST OF HONSHU, JAPAN						
		PNS	PKP	06 16 46	C	1.0	26	
		LPB	PKP	06 16 47		1.0	22	147
	23	PNS	P	06 43 15.5	D	0.3	6	
		LPB	eP	06 43 17.3				
	23	PNS	eP	06 51 36				
			eS	52 23				
		LPB	P	06 51 45.5				
			eS	52 38.3				

JUNE

MONTH	DAY	STA	PHASE	TIME	SIGN	PER	AMPL	DIST
JUNE	23	LPR	iP	07 01 01.6	D			
		eS		29				
		PNS	P	07 01 00.8	D	0.5	12	
		S		28.4				
	23	USCGS		07 08 27.7, 18.4N, 104.5W, h = 36 km., m = 5.3				
		NEAR COAST JALISCO, MEXICO						
		PNS	p	07 17 17.2		1.0	31	
		S		24 27				
		eL		33.2				
		LPR	P	07 17 20		0.9	64	49
		e		19 18.7				
		eL		31				
	23	PNS	eP	07 27 23.9				
		LPR	eP	07 27 27.5				
	23	LPR	eP	07 42 49.5				
	23	LPR	eP	08 03 54.5				
	23	PNS	P	09 15 18.9				
		eS		42.5				
		LPR	eP	09 15 24.5				
	23	PNS	P	12 20 22.3				
		S		44.8				
	23	PNS	eP	13 20 10.2				
	23	LPR	P	14 35 39.8		1.2	63	
		PNS	P	14 35 41.2	D	0.6	18	
	23	LPR	eP	16 05 14.7		0.7	27	
		PNS	P	16 05 15.7	D	0.4	14	
	23	PNS	eP	16 25 13.1				
		S		35.8				
	23	PNS	eP	17 54 13.3				
	23	LPR	eP	18 06 28.4				
		PNS	P	18 06 30.3				
		S		59.5				
	23	PNS	P	20 53 28.1	D	0.8	13	
		LPR	eP	20 53 32				
		eL		21 05				
	23	PNS	P	21 05 25.7				

120

JUNE

MONTH	DAY	STA	PHASE	TIME	SIGN	PER	AMPL	DIST
JUNE	24	USCGS 00 35 05.5, 11.7N, 85.7W, h = 100 km., m = 5.3						
		NICARAGUA						
		PNS	P	00 41 29	C	0.7	17	
		LPR	P	00 41 32.8		0.8	18	33
		(PcP)		44 15.5				
		eS		46 49				
		eL		50				
	24	USCGS 03 29 17.3, 5.8S, 146.8E, h = 113 km., m = 5.6						
		EAST NEW GUINEA REG						
		PNS	PKP	03 48 22.7				
		i		29				
		PKS		52 00.6				
		LPR	PKP	03 48 25.5		1.5	82	13
		i		35.5				
		PKS		52 11.5				
		eL		04 34.2				
	24	LPR	iP	04 30 49.0	D	1.0	454	
		S		28.5				
		PNS	P	04 30 50.6	D			
	24	USCGS 05 18 59.6, 16.5S, 72.5W, h = 91 km., m = 3.7						
		NEAR COAST OF PEPU						
		PNS	iP	05 20 03	C			
		LPR	P	05 20 07				4
		S		21 08.3				
	24	PNS	eP	06 47 12.8				
		LPR	eP	06 47 18				
	24	PNS	iP	07 26 02.7				
		LPR	P	07 26 06.2				
		eL		34				
	24	LPR	P	08 31 51.2				
		PNS	eP	08 31 52.6				
	24	LPR	eP	08 41 55.2				
		PNS	eP	08 41 56.8				
	24	USCGS 08 56 46.9, 29.6S, 71.1W, h = 89 km., m = 4.4						
		NEAR COAST OF CENTRAL CHILE						
		LPR	eP	08 59 54				15
		PNS	eP	08 59 56.2				
	24	LPR	iP	10 57 28.4	D	0.8	40	
		PNS	iP	10 57 31.8	C			

121

JUNE										
MONTH	DAY	STA	PHASE	TIME	SIGN	PER	AMPL	DIST		
JUNE	24	LPR	p	11 17 42						
			i	18 21						
		PNS	p	11 17 46.5						
	24	USCGS 10 58 07.3, 13.3N, 123.0E, h = 42 km., m = 5.1 LUZON, PHILIPPINE IS								
		LPR	PKP	11 18 21				168		
			e	19 31.5						
		PNS	PKP	11 18 21						
	24	LPR	eP	11 31 22						
		PNS	eP	11 31 31.7						
	24	LPR	LPR	15 57 18						
		PNS	p	15 57 25.9						
			s	48.2						
	24	PNS	eP	19 02 10.8						
			s	34						
	24	PNS	p	20 43 23						
		LPR	p	20 43 29.5		1.0	20			
	24	LPR	eP	22 27 47						
			e	28 41						
		PNS	p	22 27 49.4		0.7	5			
	25	PNS	eP	00 25 01.2						
			s	31.6						
	25	LPR	eL	01 47						
	25	PNS	eP	07 17 13						
			s	37.6						
		LPR	eP	07 17 17.5						
			eS	39.8						
	25	USCGS 07 24 49.4, 4.5N, 96.7E, m = 53 NORTHERN SUMATRA								
		PNS	ePKP	07 44 50.8						
			e	45 38.6						
		LPR	PKP	07 44 54		1.4	31	161		
			e	45 33.5						
			eL	08 42.5						
	25	LPR	eP	08 01 33.5						
		PNS	eP	08 01 35.2						
	25	LPR	p	10 14 33		1.0	10			
		PNS	p	10 14 33.5						
			s	15 05.8						

JUNE										
MONTH	DAY	STA	PHASE	TIME	SIGN	PER	AMPL	DIST		
JUNE	25	PNS	p	11 29 44.9						
			s	30 14.8						
		LPR	eP	11 29 47.7						
	25	PNS	eP	14 25 49						
		LPR	eP	14 25 53.5						
	25	PNS	eP	16 29 49.3						
	25	LPR	eP	17 28 06						
			e	29						
		PNS	eP	17 28 10						
			eS	29 30.6						
	25	PNS	eP	20 19 08.4						
	25	LPR	p	20 54 52.8						
		PNS	eP	20 54 54.7						
	25	USCGS 21 53 30.7, 2.1N, 90.5W, m = 4.8 GALAPAGOS IS REG								
		PNS	eP	21 59 22.8				2.2		114
			L	22 08.9						
		LPR	eP	21 59 28.5				2.0		108
			eL	22 08.5				29		
	25	LPR	eP	23 03 37						
		PNS	iP	23 03 38.7						
	26	PNS	eP	00 11 45.7						
		LPR	eP	00 11 49						
	26	PNS	eP	01 29 12.8						
			s	35.6						
	26	PNS	eP	02 07 50.5						
			s	08 12.2						
	26	USCGS 02 30 58.4, 2.0N, 40.5W, m = 5.0 GALAPAGOS IS REG								
		PNS	p	02 36 51						
			s	41 38						
			eL	46.4						
		LPR	p	02 36 56				2.0		216
			s	41 44						
			eL	46						
	26	PNS	eP	04 04 46.6						
		LPR	p	04 04 47.2						
	26	USCGS 07 50 46.1, 6.5N, 133.8E, h = 28 km., m = 4.9 WEST CAROLINA IS								
		PNS	ePKP	08 10 41.8						
		LPR	ePKP	08 10 43				156		
	26	LPR	eP	09 15 38				123		
		PNS	p	09 15 38.9						

JUNE										
MONTH	DAY	STA	PHASE	TIME	SIGN	PER	AMPL	DIST		
JUNE	26	PNS	eP	14 18 35.7		0.4	3			
	26	LPB	eP	16 05 22			15			
		PNS	eP	16 05 23.2		1.2				
	26	PNS	e(P)	16 15 23.2						
	26	LPB	eP	18 23 05.4						
		PNS	eP	18 23 07.5						
	26	LPB	eP	20 20 11.5						
	26	PNS	P	20 23 13.6		0.6	6			
	26	LPB	eP	21 45 12.5						
		PNS	eP	21 45 14						
	26	PNS	eP	22 31 53.2						
			eS	33 16.1						
		LPB	eP	22 31 59						
			eS	33 11.5						
	27	PNS	eP	00 55 04.4						
		LPB	eP	00 55 11.3						
	27	USCGS 02 15 46.3, 42.4N, 143.9E, h = 32 km., m = 4.9 HOKKAIDO, JAPAN REG.								
		LPB	PKP	02 35 19				143		
		PNS	ePKP	02 35 22.6						
	27	LPB	eP	02 52 05.5						
			eL	03 25						
		PNS	eP	02 52 10.4						
	27	USCGS 02 47 42.3, 6.4S, 130.1E, h = 113 km., m = 5.3 BANDA SEA								
		LPB	P	03 07 29.5		1.0	20	151		
		PNS	P	03 07 29.9		1.0	27			
	27	LPB	eP	06 03 12						
		PNS	eP	06 03 15.9						
	27	LPB	eP	06 22 13						
	27	LPB	e(P)	07 47 03.3						
	27	USCGS 07 41 22.2, 14.7S, 167.7E, h = 39 km., m = 5.3 NEW HEBRIDES IS								
		PNS	ePKP	08 00 04.1						
			e	01 11.9						
		LPB	ePKP	08 00 05.5				116		
								124		

JUNE										
MONTH	DAY	STA	PHASE	TIME	SIGN	PER	AMPL	DIST		
JUNE	27	PNS	eP	08 13 04.7						
		LPB	eP	08 13 09						
	27	USCGS 07 54 41.4, 4.4N, 126.7E, m = 5.2 TALAUD IS								
		PNS	ePKP	08 14 43.1						
		LPB	PKP	08 14 43.4		0.8	9	160		
	27	LPB	eP	08 33 24						
		PNS	eP	08 33 25.4						
	27	USCGS 09 00 32.7, 21.0S, 11.6W, m = 5.0 SOUTH ATLANTIC RIDGE								
		LPB	P	09 09 53.2						
			eL	26.5						
		PNS	eP	09 09 53.8				54		
	27	LPB	eP	09 15 13.5						
		PNS	eP	09 15 13.7						
	27	PNS	eP	11 19 13.4						
		LPB	eP	11 19 17						
	27	PNS	eP	13 02 44.6						
		LPB	eP	13 02 46						
	27	PNS	eP	13 27 07.3						
		LPB	eP	13 27 11						
			eL	37						
	27	LPB	eP	13 56 44						
		PNS	eP	13 56 51.4						
	27	PNS	eP	14 01 21.2						
	27	LPB	eP	14 24 23						
	27	PNS	eP	14 34 32.6						
		LPB	eP	14 34 36.5						
	27	LPB	eP	15 28 25						
		PNS	P	15 28 27.6		0.8	7			
	27	PNS	eP	16 35 12.1						
		LPB	eP	16 35 14		0.5	6			
	27	LPB	eP	18 04 17.5						
		PNS	eP	18 04 23.7						
	28	LPB	eP	04 06 44						
		PNS	eP	04 06 45.1						

JUNE										
MONTH	DAY	STA	PHASE	TIME	SIGN	PER	AMPL	DIST		
JUNE	28	USCGS 04 34 42.6, 12.8N, 89.2W, h = 69 km., m = 5.2 OFF COAST OF CENTRAL AMERICA								
		PNS	p	04 41 34.6		1.0	32			
			s	47 12						
			eL	52						
		LPB	p	04 41 375		1.0	32	36		
			eL	54						
	28	BPB	eP	05 05 56						
			s	06 26						
		PNS	eP	05 06 03.2						
			s	38.4						
	28	LPB	eP	06 33 26						
	28	LPB	eP	06 55 18						
	28	PNS	eP	07 16 02.4						
	28	PNS	eP	07 59 49.2						
			eS	08 00 11.4						
	28	PNS	eP	08 20 36.9						
			s	21 05.5						
		LPB	eP	08 20 42						
	28	LPB	p	08 48 05		1.2	15			
		PNS	eP	08 48 07						
	28	PNS	eP	10 32 34.4						
	28	LPB	eP	11 04 53						
	28	PNS	p	12 39 59.1						
			s	40 44.4						
		LPB	eP	12 40 10						
			eS	50						
	28	LPB	eP	12 57 30						
		PNS	eP	12 57 27.8						
			eS	58 18.2						
	28	USCGS 14 22 15.0, 6.7N, 126.6E, h = 114 km., m = 5.2 MINDANAO, PHILIPPINE IS								
		LPB	ePKP	14 42 08				162		
		PNS	ePKP	14 42 09.1						
	28	PNS	eP	15 44 01.5						
			eS	45 19.1						
		LPB	eP	15 44 06.2						
	28	USCGS 20 01 03, 30.2S, 71.2W, h = 61 km., m = 3.8 NEAR COAST OF CENTRAL CHILE								
		PNS	eP	20 04 28				14		
		LPB	eP	20 04 31				126		

JUNE										
MONTH	DAY	STA	PHASE	TIME	SIGN	PER	AMPL	DIST		
JUNE	28	PNS	eP	20 28 02.1						
	28	PNS	p	21 43 44.2	D					
		LPB	eP	21 43 45						
	28	LPB	eP	22 33 06.5						
		PNS	eP	22 33 09.2						
	29	LPB	p	00 09 05.4				0.7	64	
			eS	10 08.4						
		PNS	iP	00 09 09	D					
			s	10 14.2						
	29	LPB	eP	02 22 55						
		PNS	eP	02 22 59.5						
	29	LPB	eP	02 38 44						
		PNS	eP	02 38 49.5						
	29	PNS	p	05 07 16.6						
		LPB	eP	05 07 17						
	29	LPB	p	06 08 27.5				0.7	37	
		PNS	p	06 08 28.6	C			0.5	14	
	29	PNS	eP	06 18 17.8						
	29	LPB	eP	06 27 15						
	29	PNS	eP	06 52 46.9						
	29	LPB	eP	07 20 10.4						
		PNS	eP	07 20 12.1						
	29	PNS	p	09 34 29.8	C					
		LPB	p	09 34 35						
	29	USCGS 10 34 06.5, 30.5S, 178.2W, h = 43 km., m = 5.6 KERMADEC IS REG								
		PNS	p	10 47 37						
			SKS	58 20						
			L	11 20						
		LPB	p	10 47 43.5				1.0	12	
			SKS	58 16						
			i	11 00 32						
			L	20						
	29	LPB	eP	16 44 12.5						
		PNS	eP	16 44 12.8						

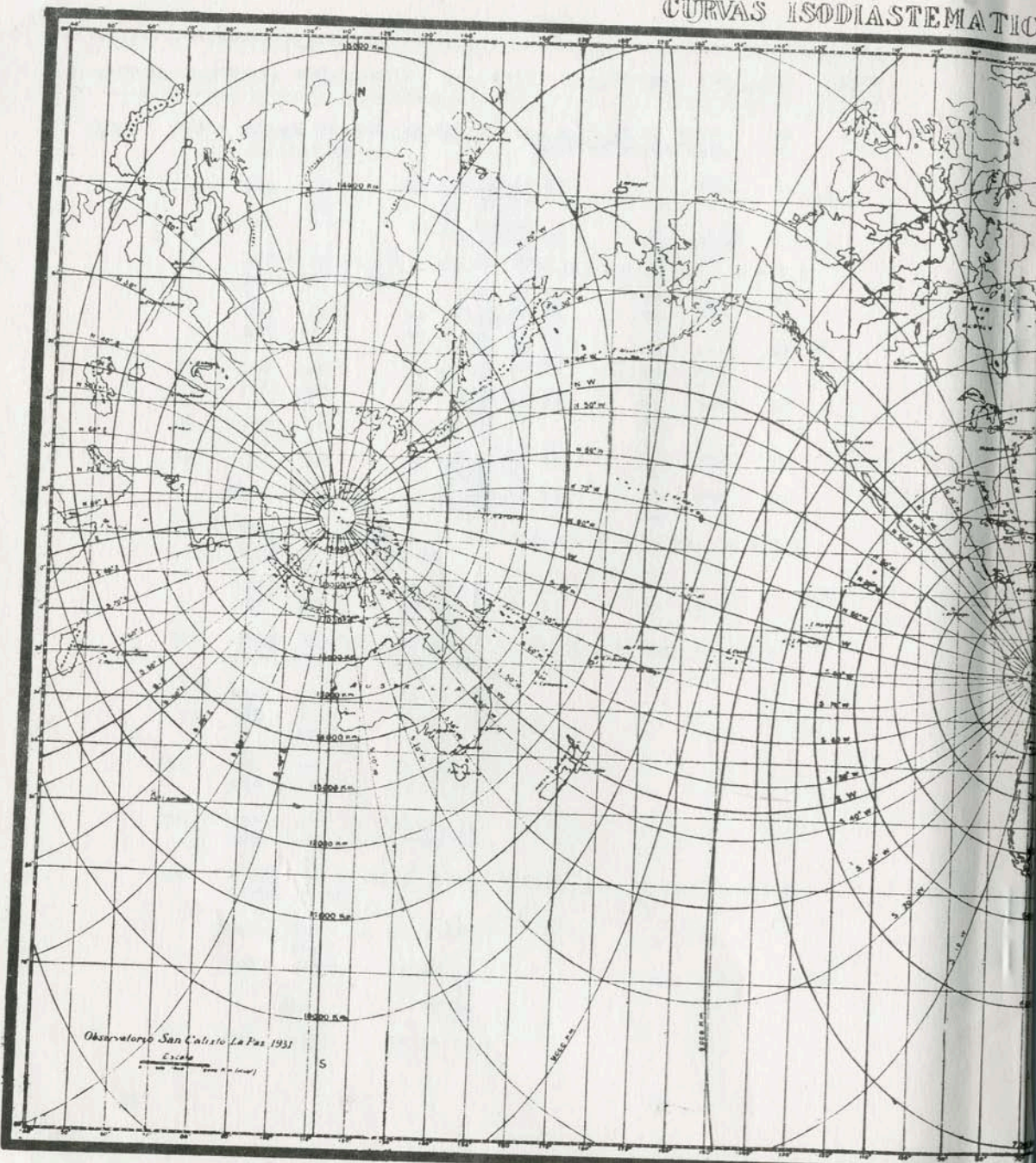
JUNE

MONTH	DAY	STA	PHASE	TIME	SIGN	PER	AMPL	DIST
JUNE	29	USCGS 17 09 13.9, 62.8S, 166.3E, m = 5.5 BALLENY IS REG						
		LPB	eP	17 22 13.7				90
			eL	51.7				
		PNS	P	17 22 14.2		1.5	75	
	29	USCGS 18 01 51.7, 62.7S, 166.4E, h = 41 km., m = 5.3 BALLENY IS REG						
		PNS	eP	18 14 53.6				90
		LPB	P	18 14 54				
	29	LPR	eP	18 47 14				
		PNS	eP	18 47 15.5				
	29	LPR	eP	20 49 14.7				
	30	LPB	eP	04 15 53.5				
			e	18 14				
		PNS	eP	04 15 53.7				
	30	USCGS 07 33 01.6, 10.4S, 117.0E, h = 15 km., m = 5.5 SOUTH OF SUMBAWA IS						
		LPB	ePKP	07 53 04				153
		PNS	ePKP	07 53 05.8				
	30	USCGS 08 27 21.5, 3.6S, 77.0W, h = 71 km., m = 4.6 PERU ECUADOR BORDER REG						
		PNS	eP	08 30 53.4				15
		LPB	P	08 30 55				
			eL	35				
	30	PNS	eP	17 45 20.3				
		LPB	eP	17 45 21				
	30	LPB	eP	17 59 26				
		PNS	eP	17 59 30				
	30	USCGS 18 21 36.5, 9.3S, 120.1E, h = 32 km., m = 5.2 SUMBA IS REG						
		PNS	PKP	18 41 28.2	D	1.1	16	
			PKP2	47.5				
		LPB	ePKP	18 41 33		1.0	20	153
			i	47				
			ePP	43 30				
	30	PNS	e(P)	19 20 21.6				

JUNE

MONTH	DAY	STA	PHASE	TIME	SIGN	PER	AMPL	DIST
JUNE	30	USCGS 20 02 23.6, 16.1S, 73.8W, h = 66 km., m = 4.6 NEAR COAST OF PEPU						
		PNS	P	20 04 41.6	D			
			S	05 45				
			L	06.4				
		LPB	eP	20 04 46.5				5
			S	05 50				
	30	LPB	eP	21 58 32				
		PNS	eP	21 58 34.1				
	30	LPB	eP	22 04 54				
		PNS	eP	22 04 59.8				
	30	PNS	iP	23 54 52.1				
			eS	55 18.4				
	30	PNS	iP	23 57 44.5				
			S	58 28.8				
		LPB	P	23 57 50		1.0	22	
			eS	58 39.2				

CURVAS ISODIASEMATICAS



Observatorio San Calisto La Paz 1931
Escala
1:100,000